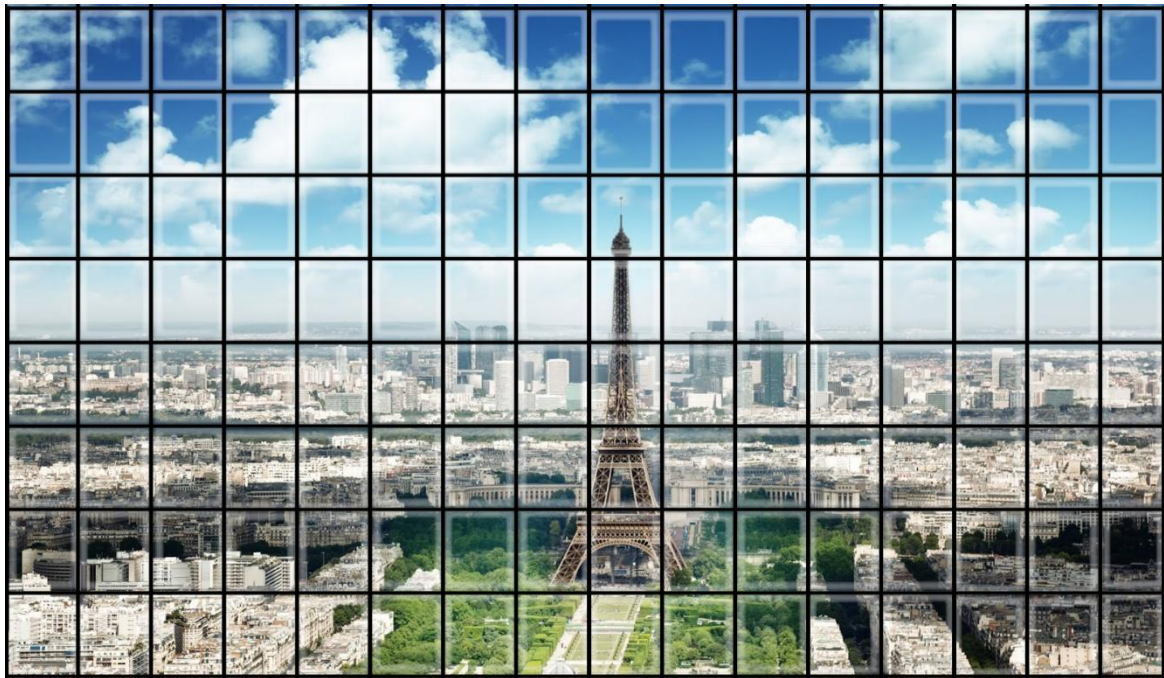
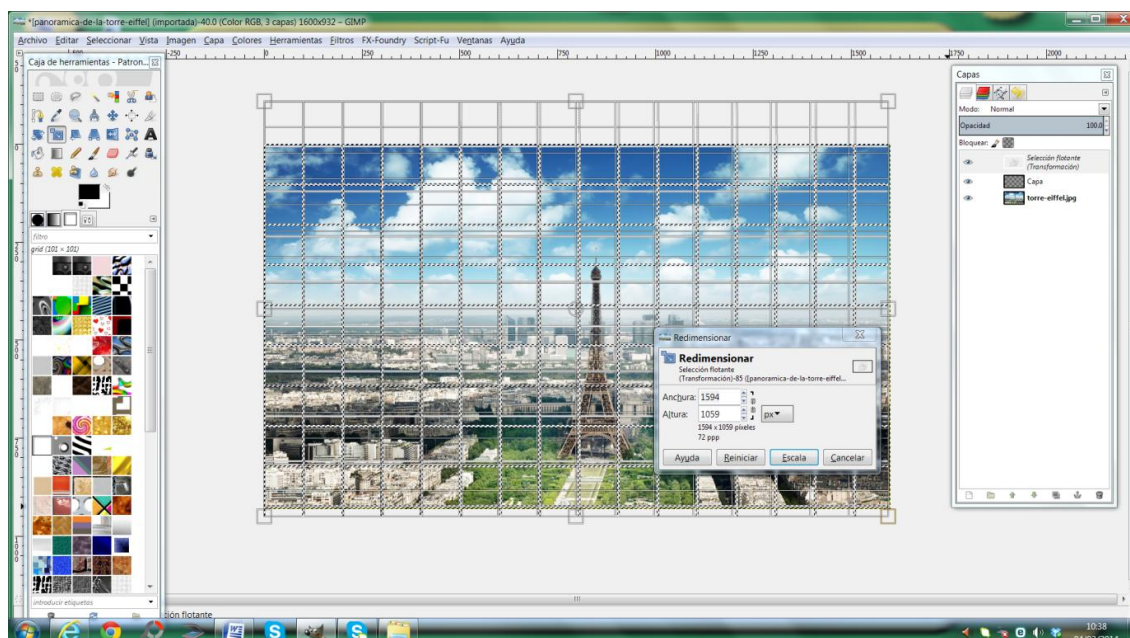


Dear friends, I try to explain how nice it'd be to have a window in front of our dreamt marvellous view.
The image is down from the Internet.

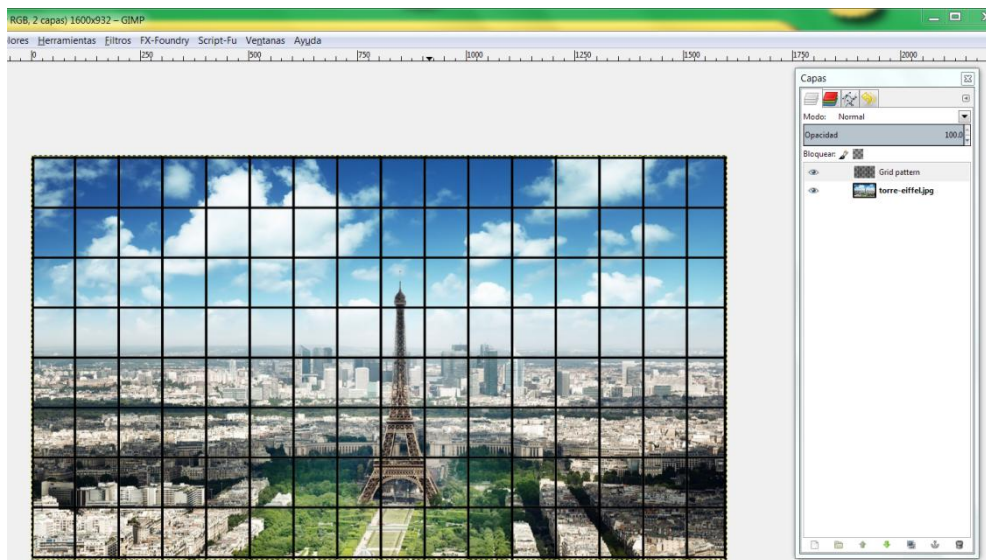
Prepare your photo (view). I'll add the brush and the grid pattern with the tutorial.



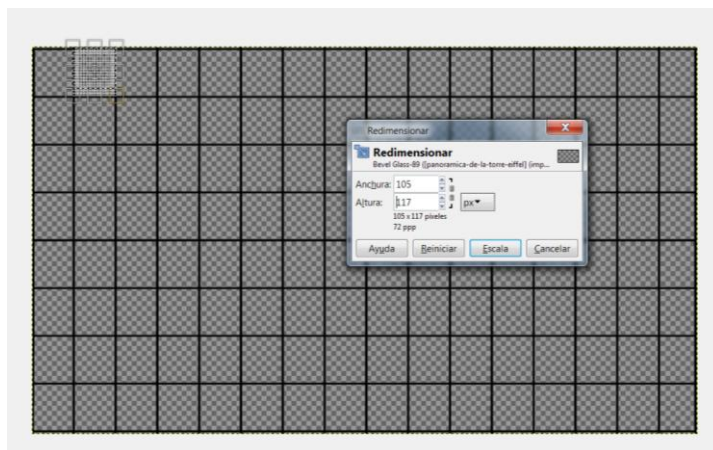
1. Open your photo. Then, create a new layer on. Name it "grid" and full the layer con the grid pattern. With resize tool adapt it to your own photo.



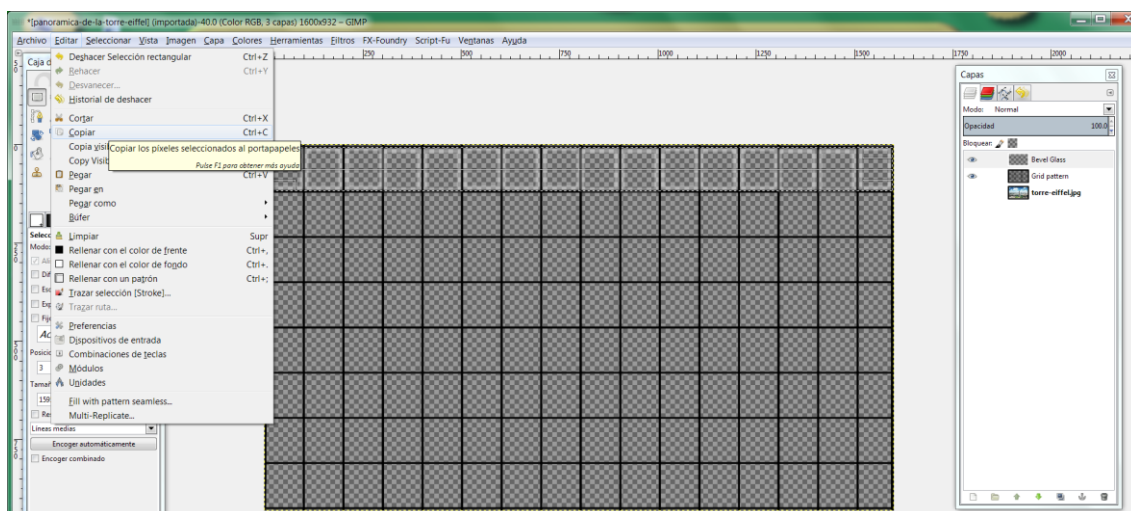
2. On the grid layer highlighted, Alpha to selection and fill the selection with a dark colour. I chose black colour. Close the eye on the photo background layer.

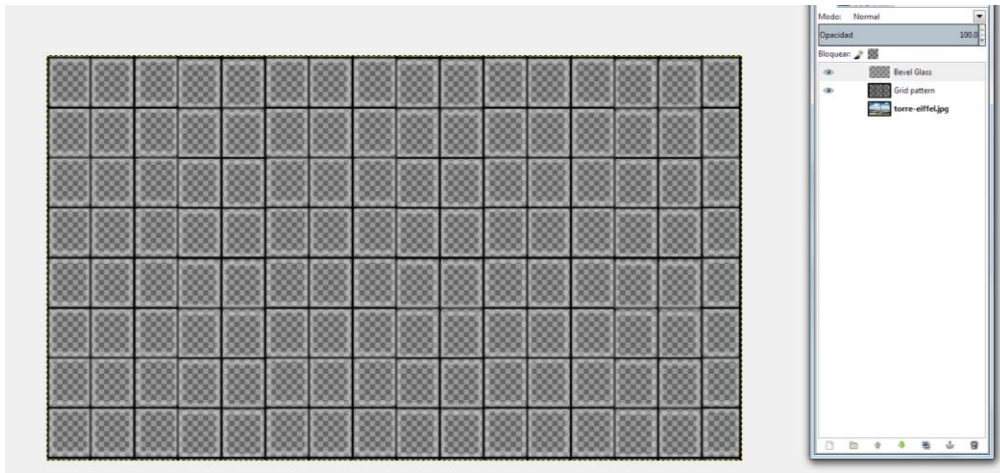


3. Create a new transparent layer on and name it "glass". Take the translucent brush and adapt it to your own size. Mine is about size 100, once you have your fitted size to your little square – go to edit – copy and then edit – paste – ankle it on the layer glass. Perhaps you should adapt the little panels at the ends. When you fill one row you can select the whole row – copy it and paste it, altogether.

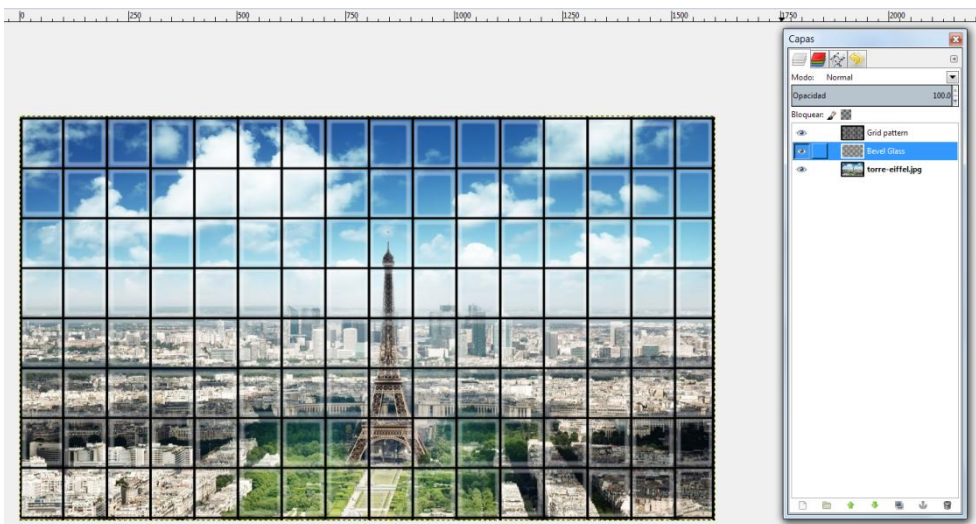


Do it until complete all the little glass panels.

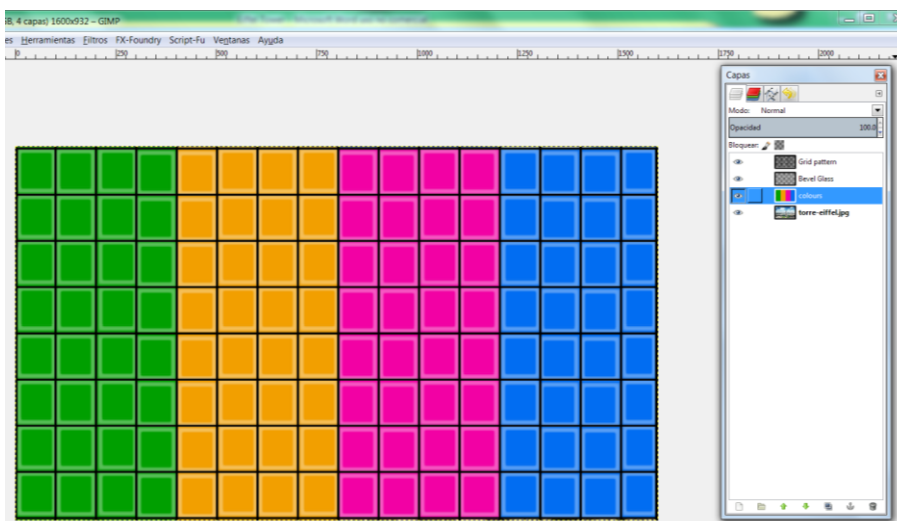


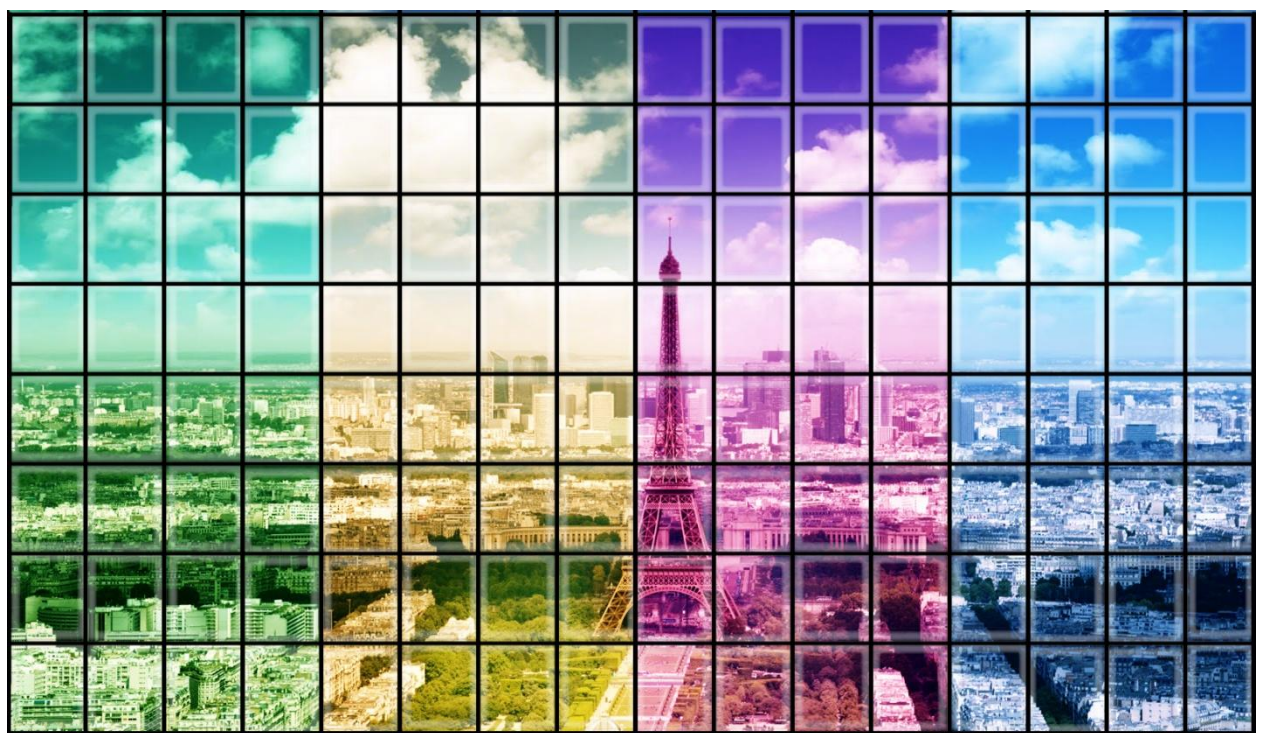
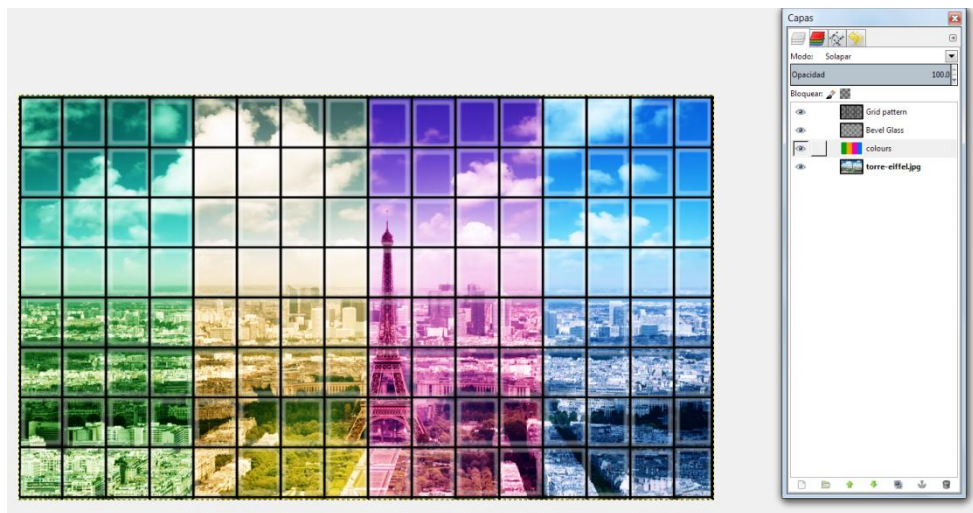


4. Open the eye to your background layer. The glass layer should be now below grid pattern layer. Combine the layers. But if you want to have a touch of fantasy, continue the following steps.



5. Create a new layer on your background layer, name it "colours" You can select vertical stripes of the photo and fill the different stripes in different colours. Then change the layer mode to overlay. Combine the layers.





Thanks friends.