

Custom Font Tools Face Maker Version 0.03 Quick Start Guide

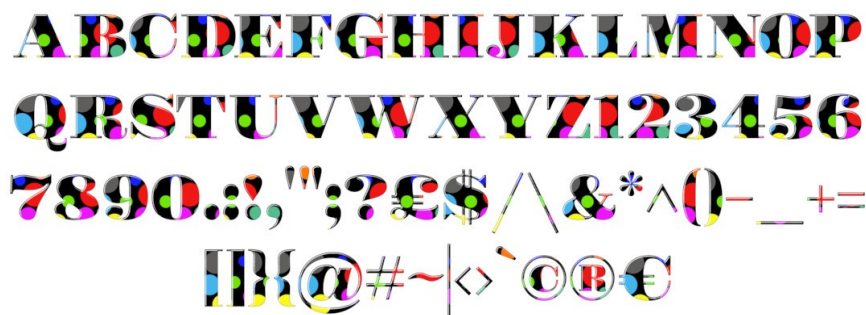
This package is intended to act as an easy introduction to using more of the options of Custom Font Face Maker for new custom font users. The accompanying zipped folder contains all the necessary resources and Gimp plug-ins to create custom fonts using the other options provided by Custom Font Face Maker: You can use the resources to practise making a custom font with more than one decorative face and for combining two custom fonts. Use your own images if you have some to hand.

The resource folder contains the following items:

Gravitas_Caps_WhiteBase.xcf – custom font file



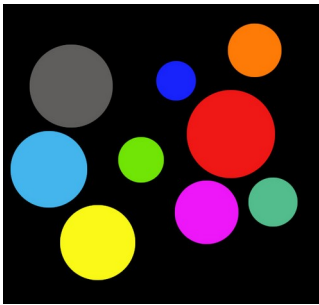
Gravitas_Caps_Spotty.xcf – custom font file



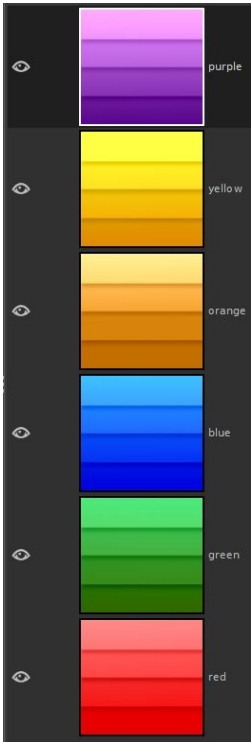
Gravitas_Caps_White_Bevel.xcf – custom font file



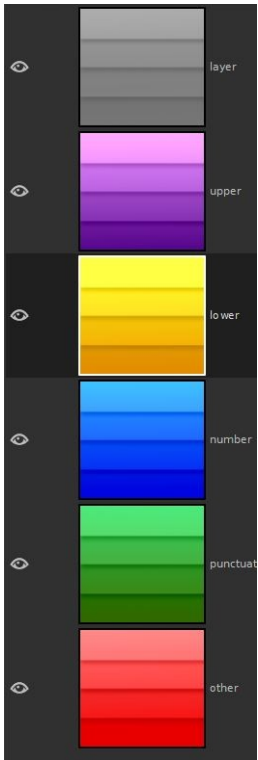
Spotty.xcf – Gimp image file (one layer) – in case you want to make your own spotty custom font.



Colours – Gimp image file (six layers)



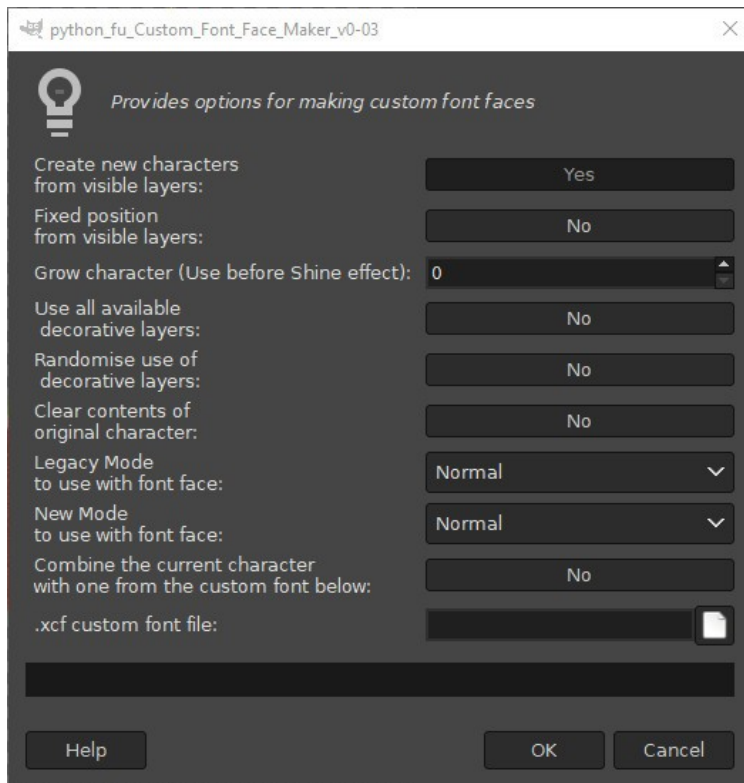
Groupings – Gimp image file (six layers)



Custom_Font_Face_Maker_v003 – a py file Gimp plug-in that can be used to apply a texture layer to each character in the White Base file.

Download the zipped Resources folder, extract and save the resources to your computer. Save the FaceMaker plug-in to your user plug-in folder if you do not already have this filter.

The filter dialog:



Create a Custom Font with Multiple Decorative Faces

The first decorative face option allows the filter to paste from all the available decorative layers (i.e. not custom font characters) in sequence to the custom font characters in the order that they appear in the layer stack.

Open the Gravitas_Caps_WhiteBase custom font in Gimp from the location you saved it to.

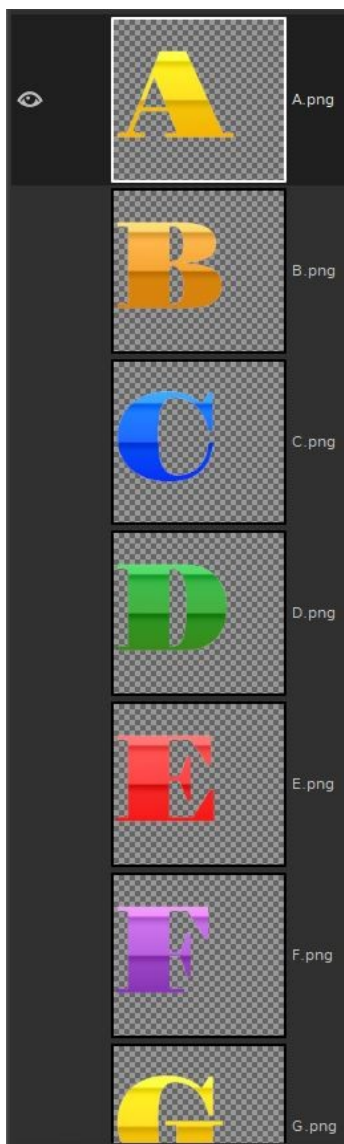
Add the decorative layers from the file called Colours to the WhiteBase characters with:

File>>Open as Layers

Call up the FaceMaker plug-in with:

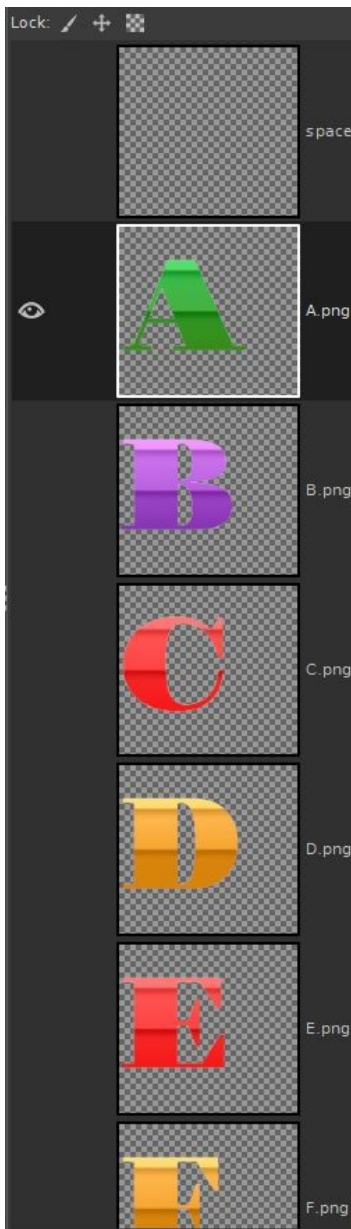
Filters>>Custom Font Tools>>Custom_Font_Face_Maker_v003

Set 'Use all available decorative layers' to 'Yes' and click on 'OK'



And that's all there is to it. The new custom font is ready for saving with another name and to have other effects applied.

This feature can also be applied randomly using the same steps, but with the ‘Randomise use of decorative layers’ option also set to ‘Yes’.



Create a Custom Font with Character Groupings

This is a ‘hidden’ feature, that enables the filter to paste decorative layers according to character groupings, by using any or all of the following self-explanatory keywords in the layer names:

upper
lower
number
punctuation
other.

The option will give better results if the named layers are placed below other decorative layers in the layer stack since the filter will use the topmost layer to paste to any character layers that do not fall into any of the groupings.

Open the Gravitas_Caps_WhiteBase custom font in Gimp.

File>>Open

Add the decorative layers from the file called Groupings to the WhiteBase characters with:

File>>Open as Layers

Call up the FaceMaker plug-in from:

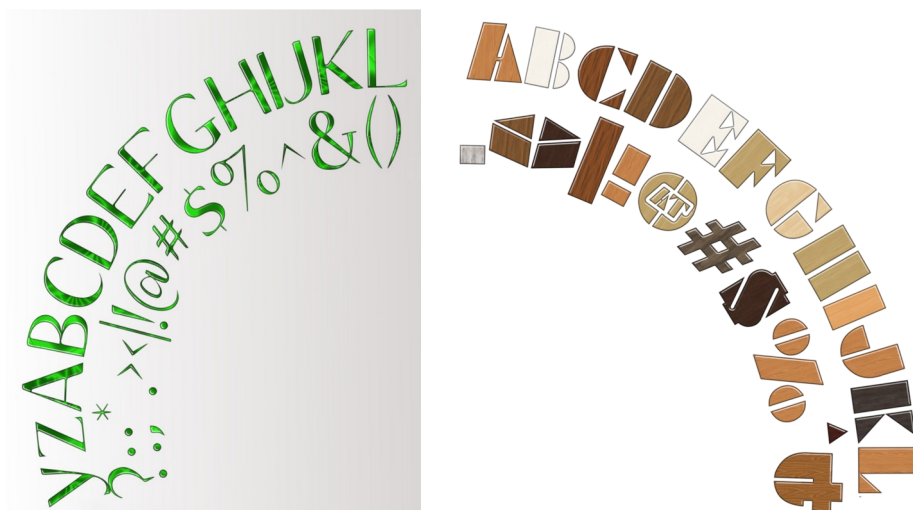
Filters>>Custom Font Tools>>Custom_Font_Face_Maker_v003

Set all options, apart from the first one, to 'No' and click on 'OK'

If you scroll through the layers you will see that the decorative layers have indeed been applied, although since this a capitals only custom font the lower group will not be used.



These techniques can also be applied when you have a number of similar decorative faces; this can add a touch of variety and interest to a custom font. (A couple of old examples.)



Create a Custom Font by Combining Two Existing Custom Fonts

The combine options allow you to add one set of custom font characters to another. This can be useful when adding a decorative border to another custom font or a border to a translucent font. The order is important; open the FaceMaker plug-in from the custom font that will lie at the bottom of the two custom fonts.

Open the Gravitas_Caps_White_Bevel.xcf, from the location that you saved it to earlier, using
File>>Open

This is the custom font that will have the next custom font applied to.

Call up the FaceMaker filter

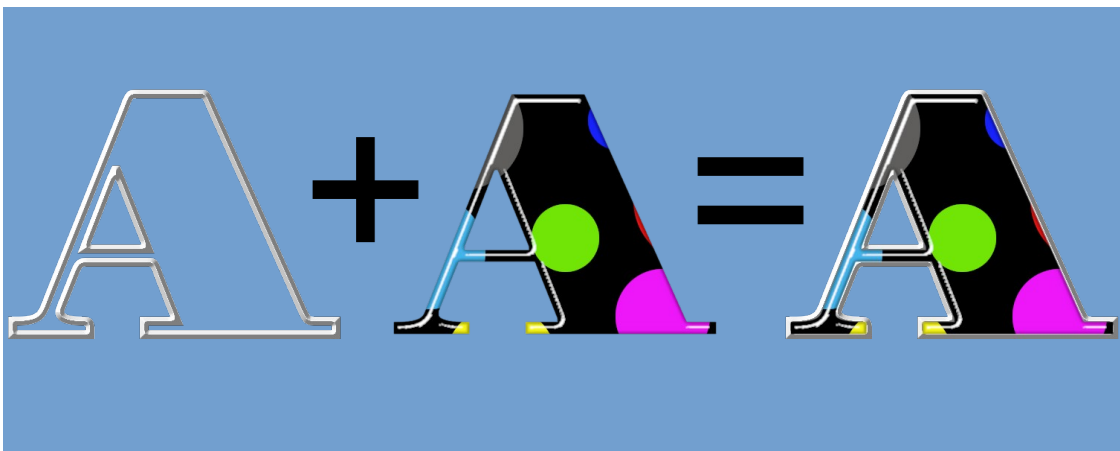
Filters>>Custom Font Tools>>Custom_Font_Face_Maker_v003

Set the first ('Create new characters etc') option to 'No'.

Set the 'Combine the current character with one from the custom font below' to 'Yes'.

Click on the folder icon on the '.xcf custom font file' option and navigate to the location of the custom font (Gravitas_Caps_Spotty.xcf) i.e. the one to be overlaid onto the current custom font.

Click on 'OK'.



The newly created custom font can now be saved if required.

The example below used the same outline with a translucent font created with the Custom Font Perspex filter: This time the translucent custom font was used at the bottom and the outline was combined with that.

