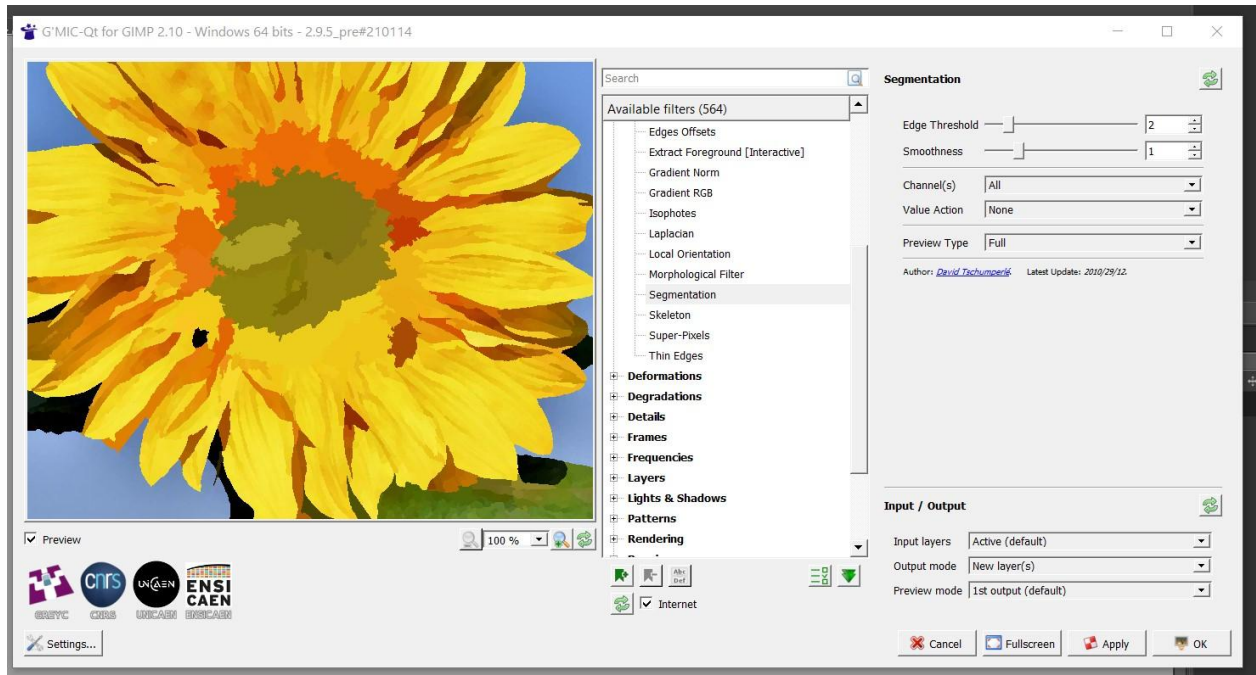


You have Gimp open

Open your image

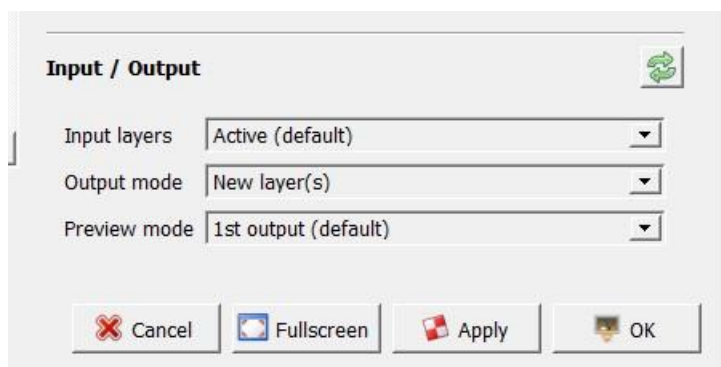
Go to GMIC and your image will be in the GMIC Window

Apply your effect



Then, you want to save the image with the new look,

At the bottom on the right you have the options to save it.



In output mode, you will find the options to save your image

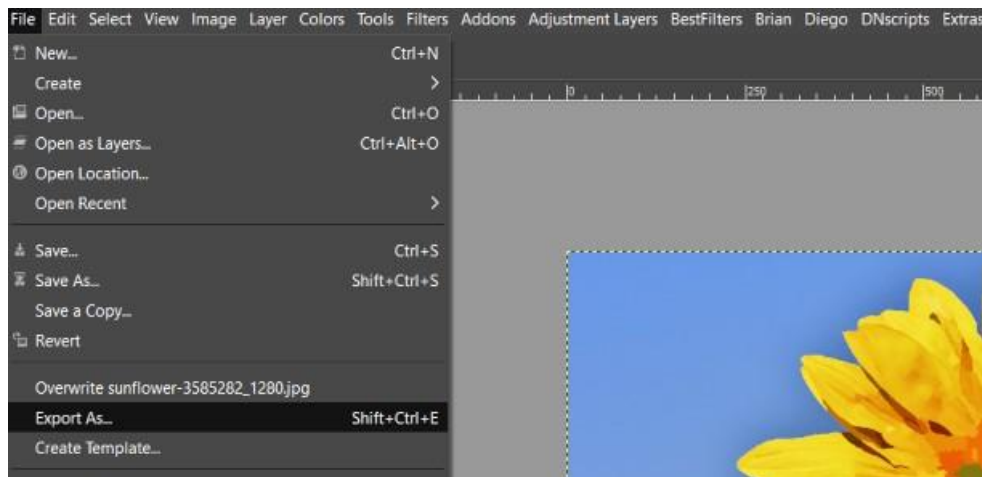
**New layer** , means that you will get a new layer with the GMIC Look above the original

layer / image you have in Gimp. There will be two layers.

**In place** means that your new effect will be applied on your original image. There will be one only layer.

So, you can export the result to save it.

File – Export as



Click there and a new window will open, so you can export it to save as; .jpg, png etc.... in your folder or place you wish.