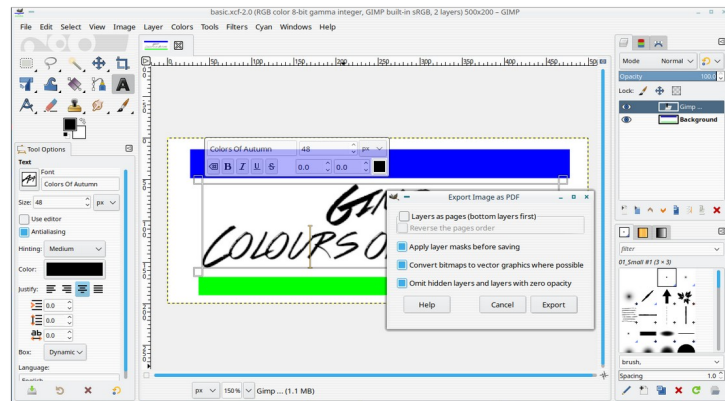


This is a document created in LibreOffice (LO) with some graphics from Gimp and Inkscape.

The sort of thing you will see when exporting a PDF from Gimp.

Do not rely on the correct font embedding unless the font is installed in your system, the Gimp font folder is no good. This image is a png

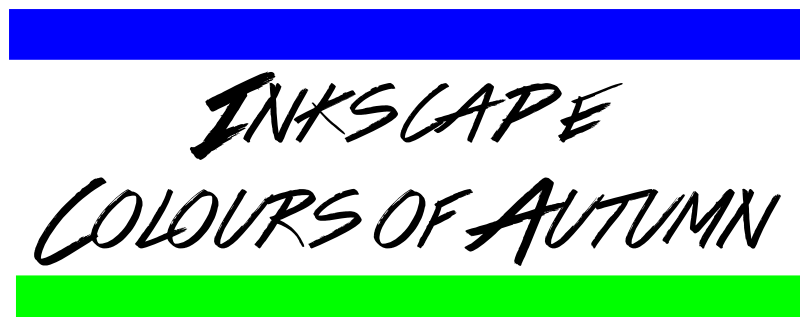


from a screenshot and edited in Gimp

You might end up with something like this



This on the other hand is a vector image made with Inkscape, a scalable vector graphic (SVG) It scales to any



size without degradation. You still need the font available to LO