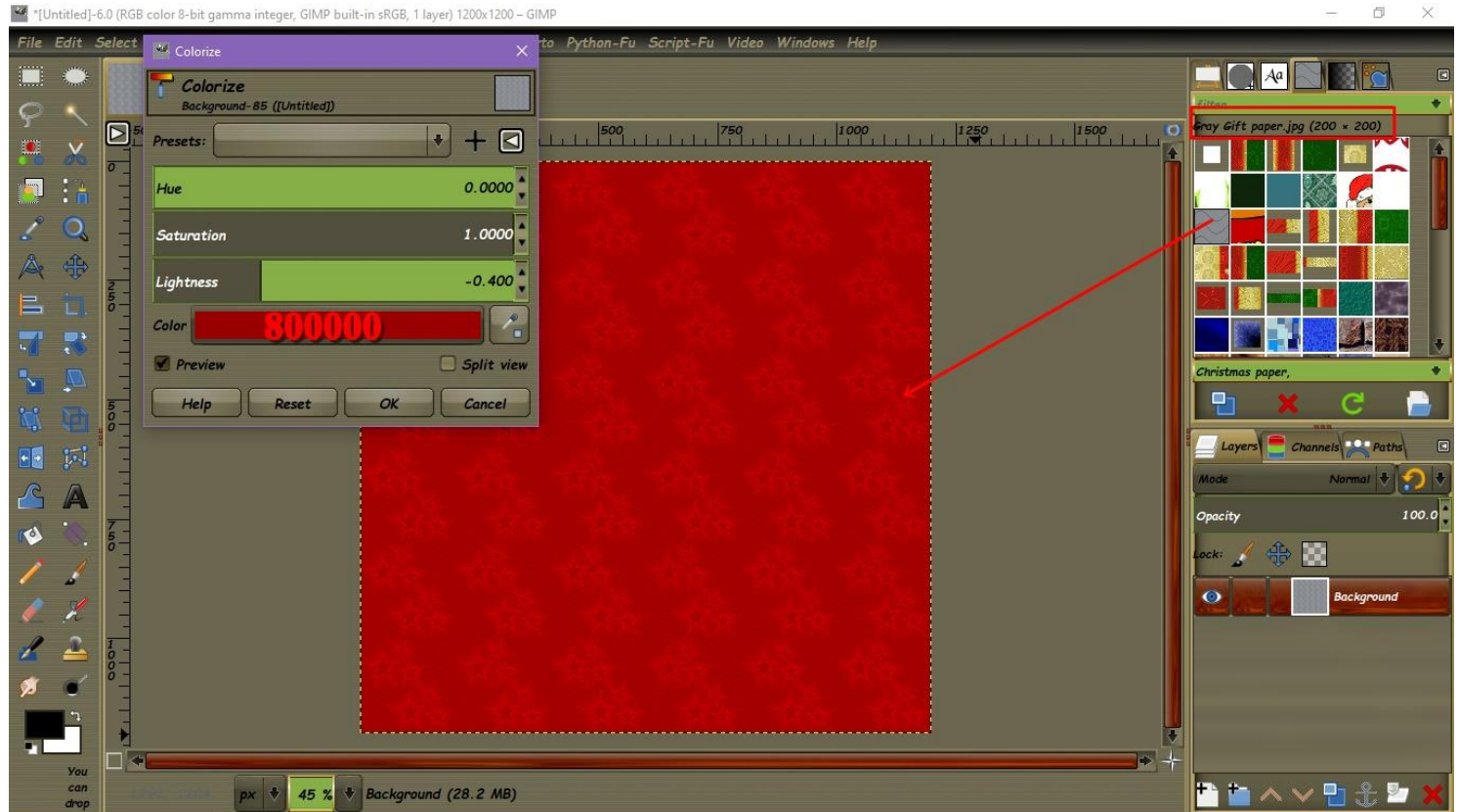


Create a Christmas gift box with GIMP 2.10

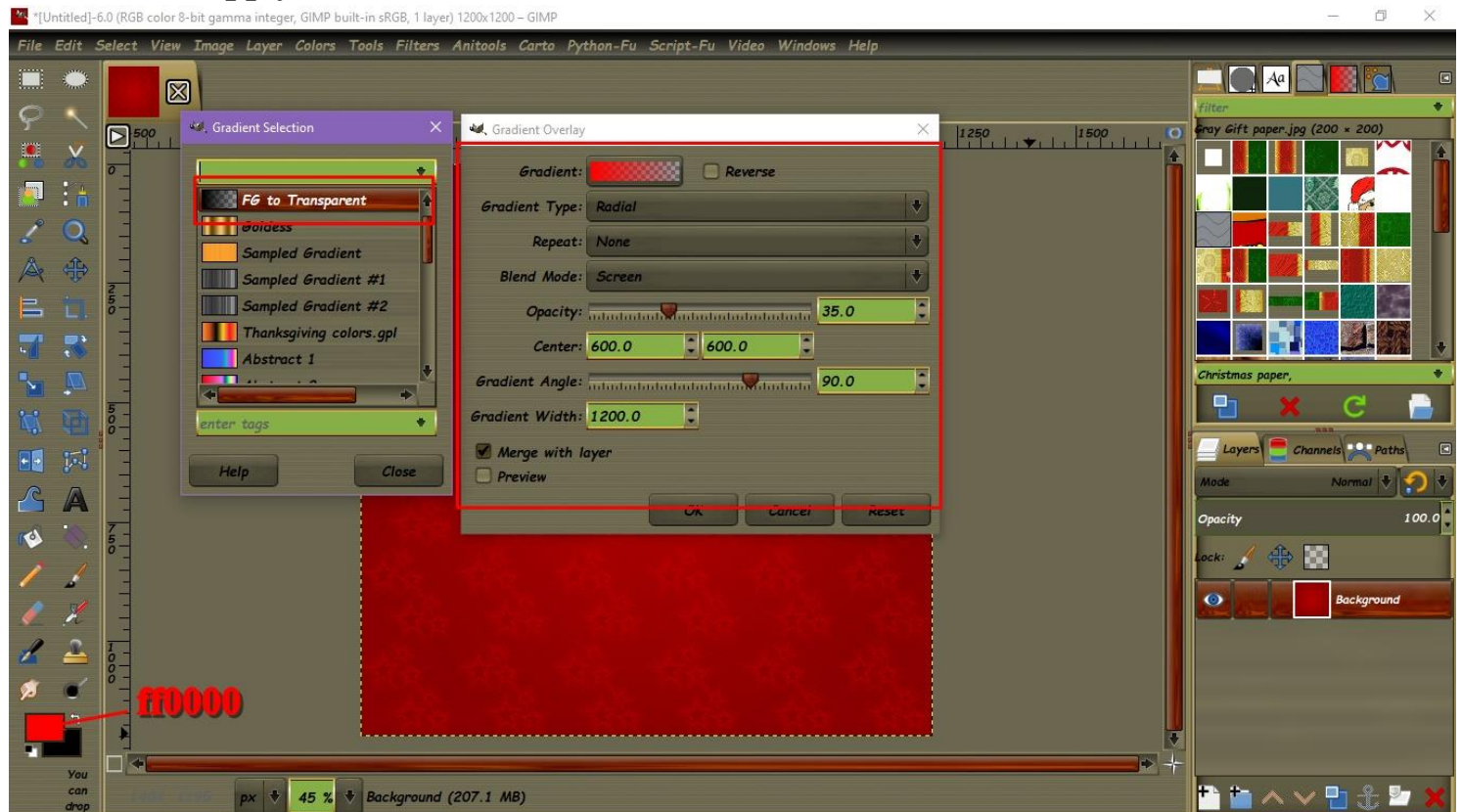


****For the Liquid rescale plugin go to: <http://liblqr.wikidot.com/en:download-page> and download it for your Operating System**

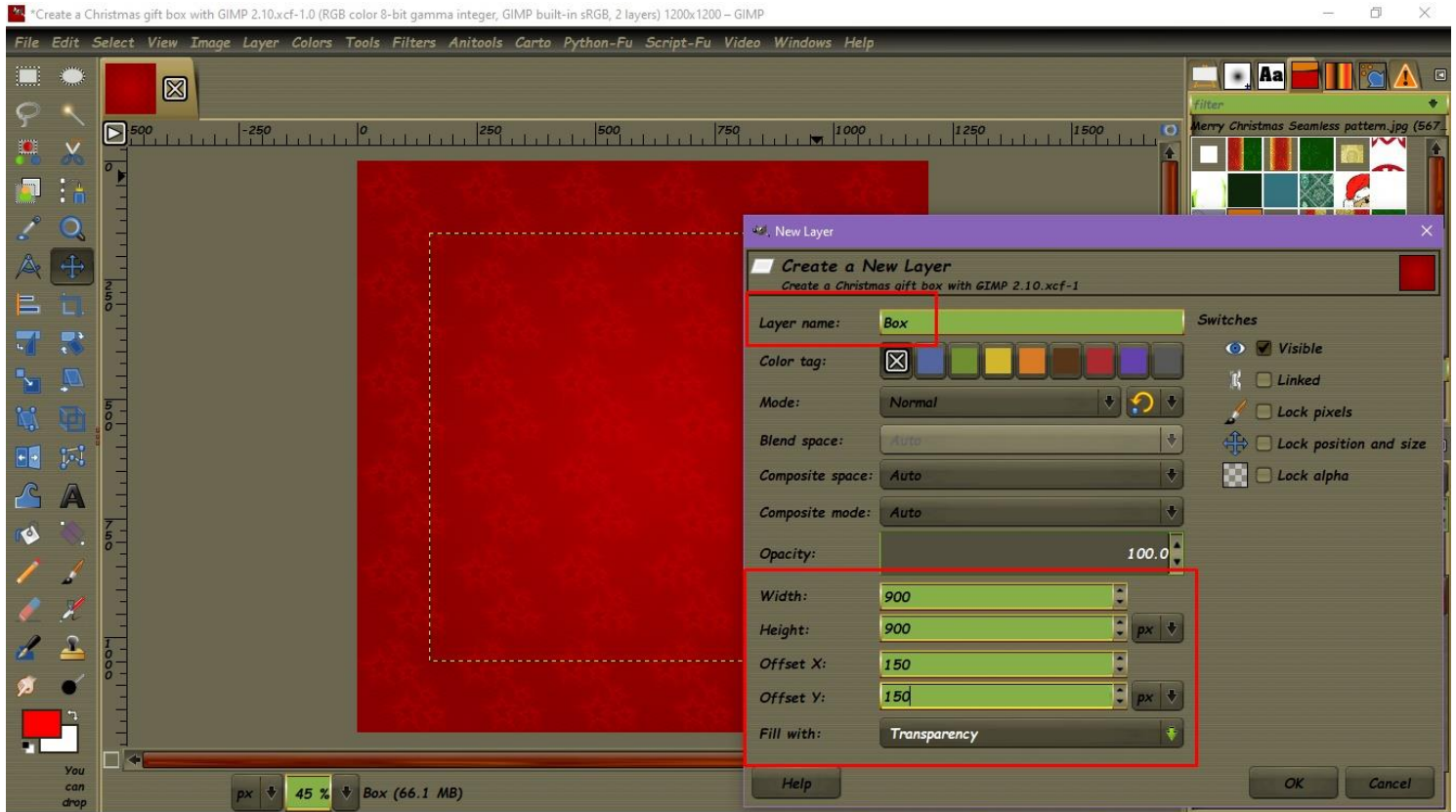
1. We start by opening a new 1200 x 1200 px document, then go the Patterns dialog and select the pattern> “Gray Gift paper”. Click on the pattern and drag it to the Canvas. Go to, Colors> Colorize, change it to> 800000 and click Ok to apply.



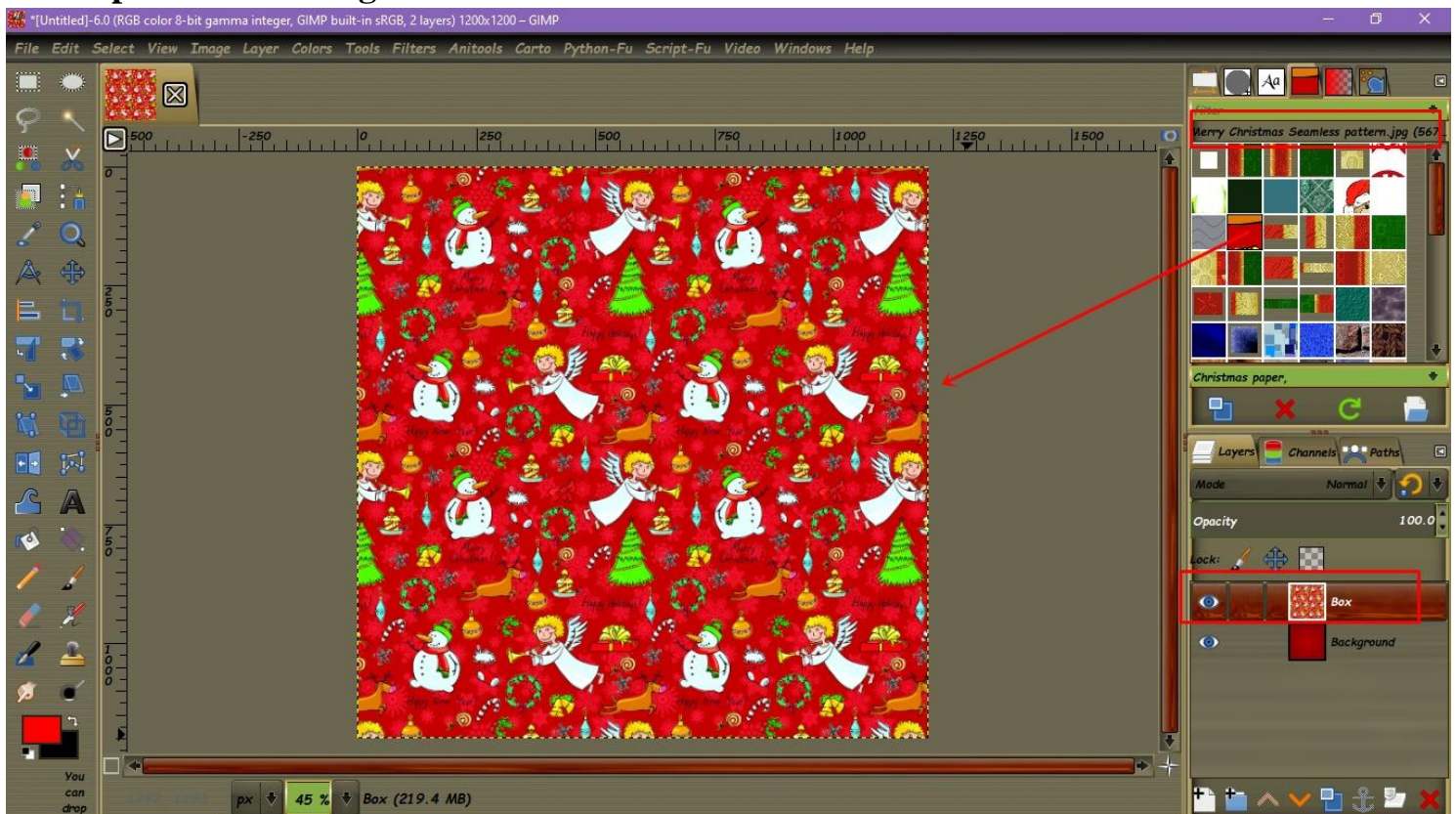
2. Right click the Background layer and select, “Add alpha Channel”. Change the Foreground color to> ff0000 and go to, Layer> Layer Effects> Gradient Overlay. Click on gradient, select the gradient> FG to Transparent and set the configuration as illustrated. Click OK to apply.



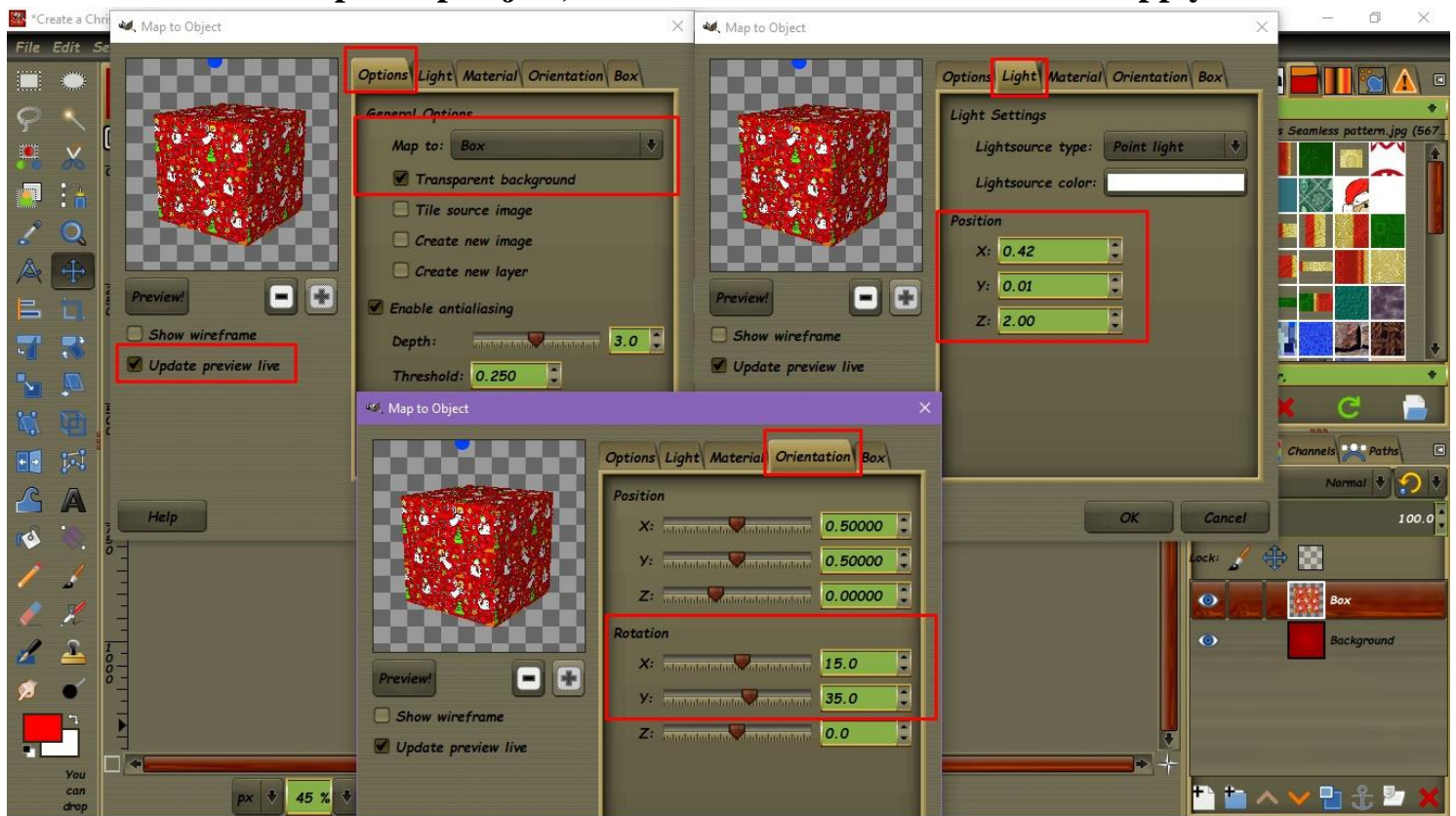
3. Add a New layer, name it “Box” and the size> 900 x 900 px. On the Offset X and Y make it 150.



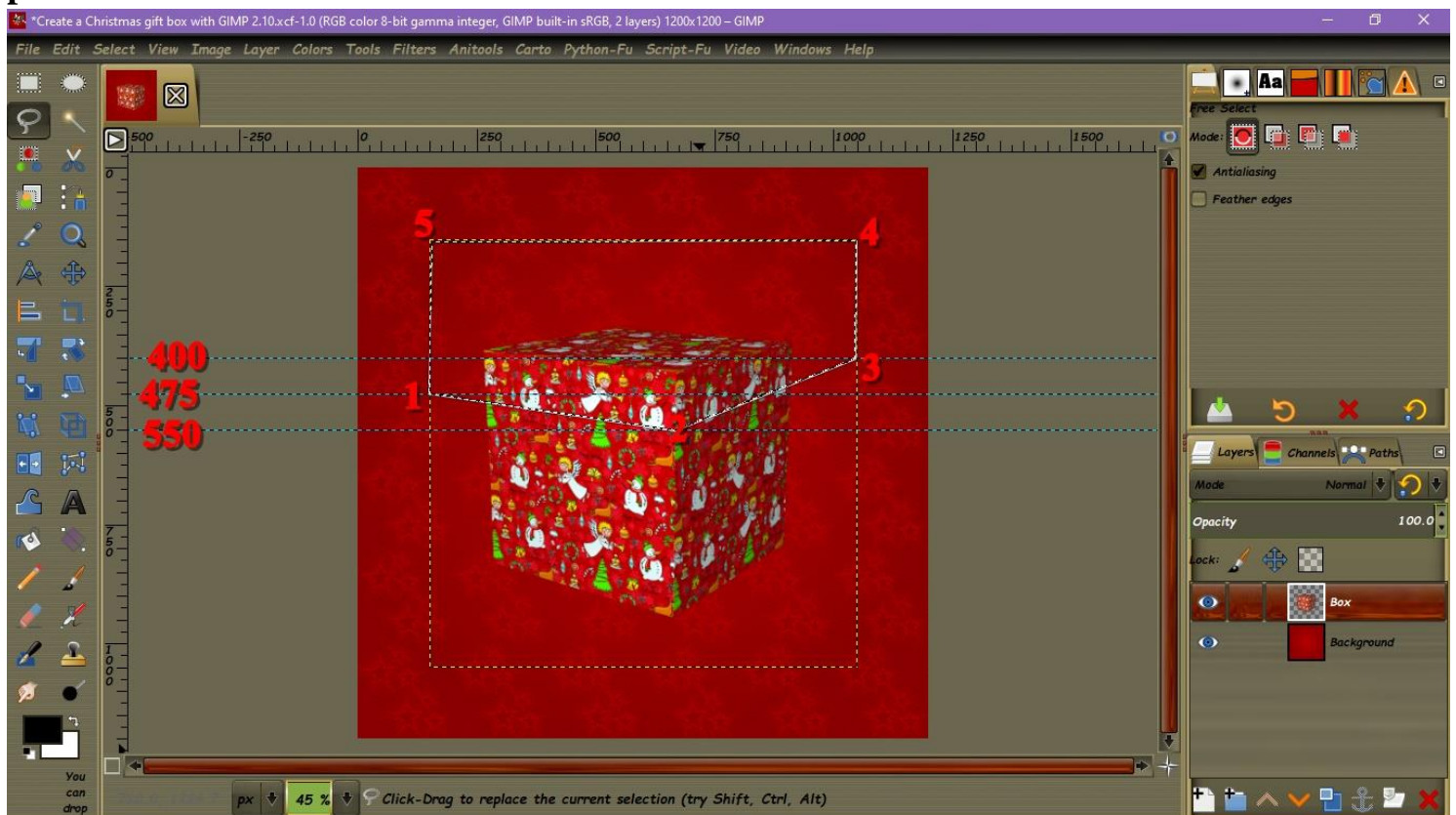
4. Go the Pattern dialog and select the pattern> “Merry Christmas Seamless pattern”. Click on the pattern and drag it to the Canvas.



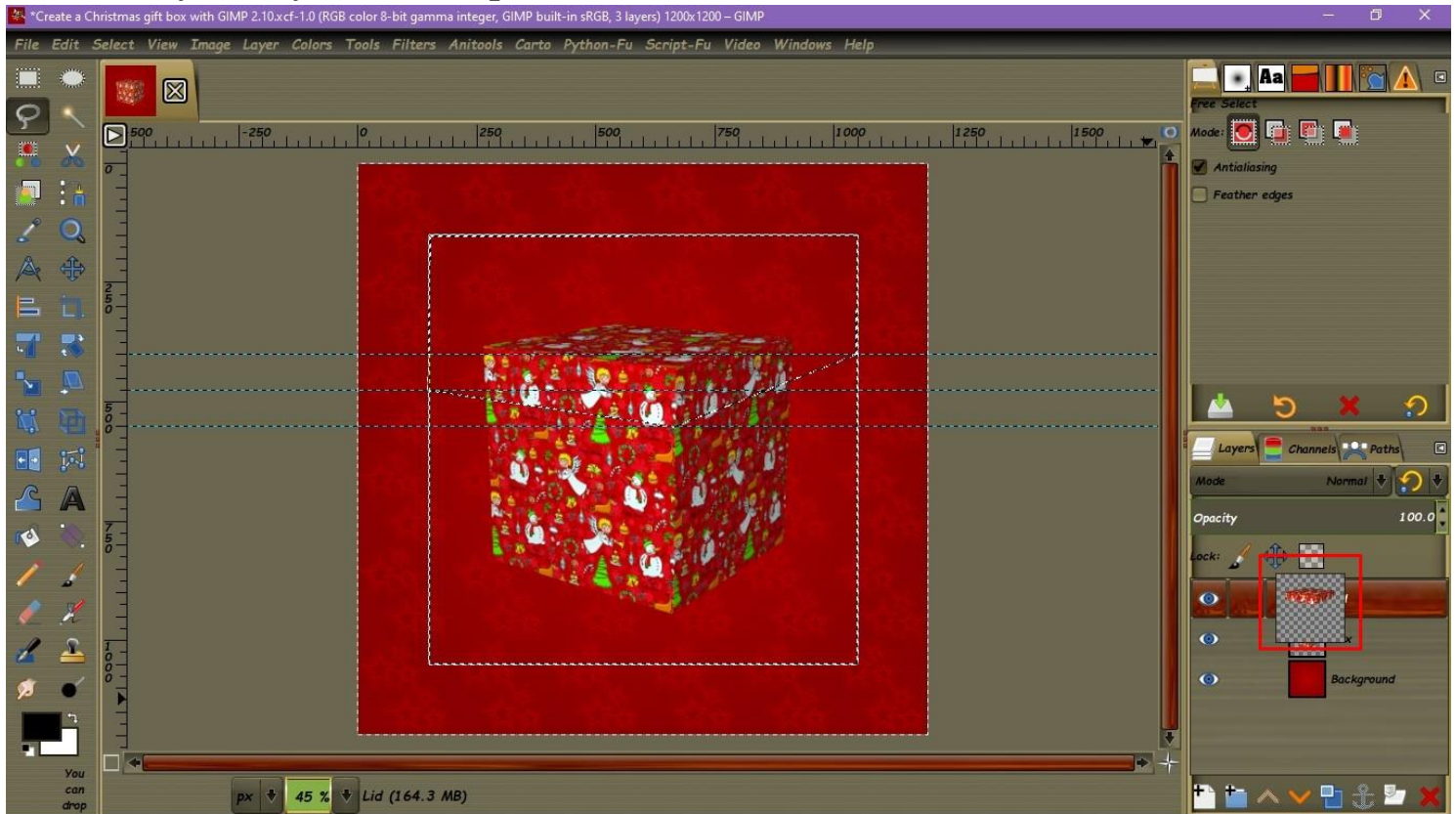
5. Go to: Filters> Map> Map object, set the three Tabs and click OK to apply.



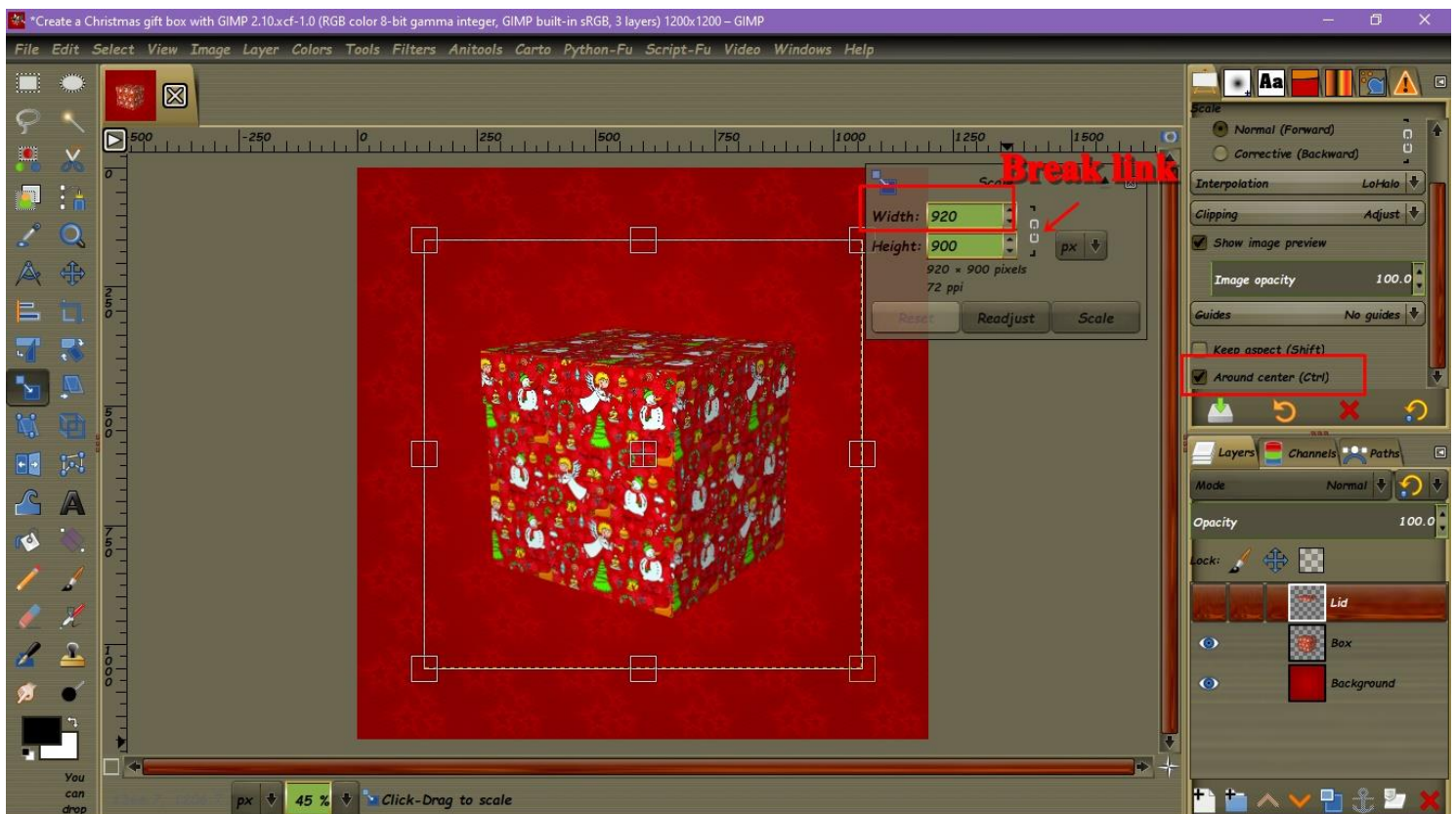
6. We have so far the Christmas square box but we need to make some effect, so it will look like a real box. Place 3 Horizontal guides on the illustrated marks and select the “Free select tool”. Now, click with the Free select tool on the 5 points illustrated and click on the first point to close the selection.



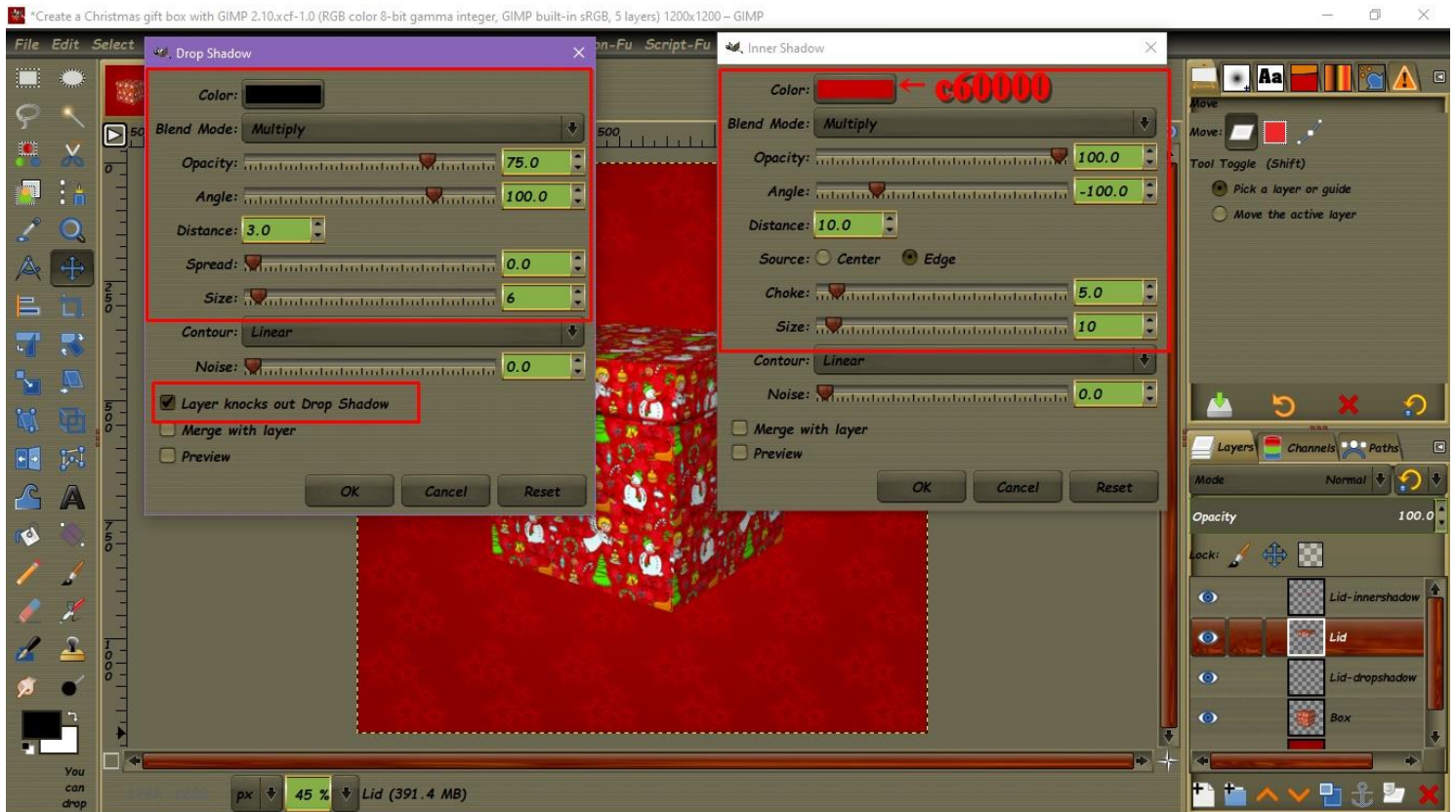
7. Duplicate the layer “Box” and rename the duplicate to “Lid”. Go to Select> Invert to invert the selection and press, “Delete” on you keyboard. And as you can see on the Layer’s thumbnail you only have the top of the box.



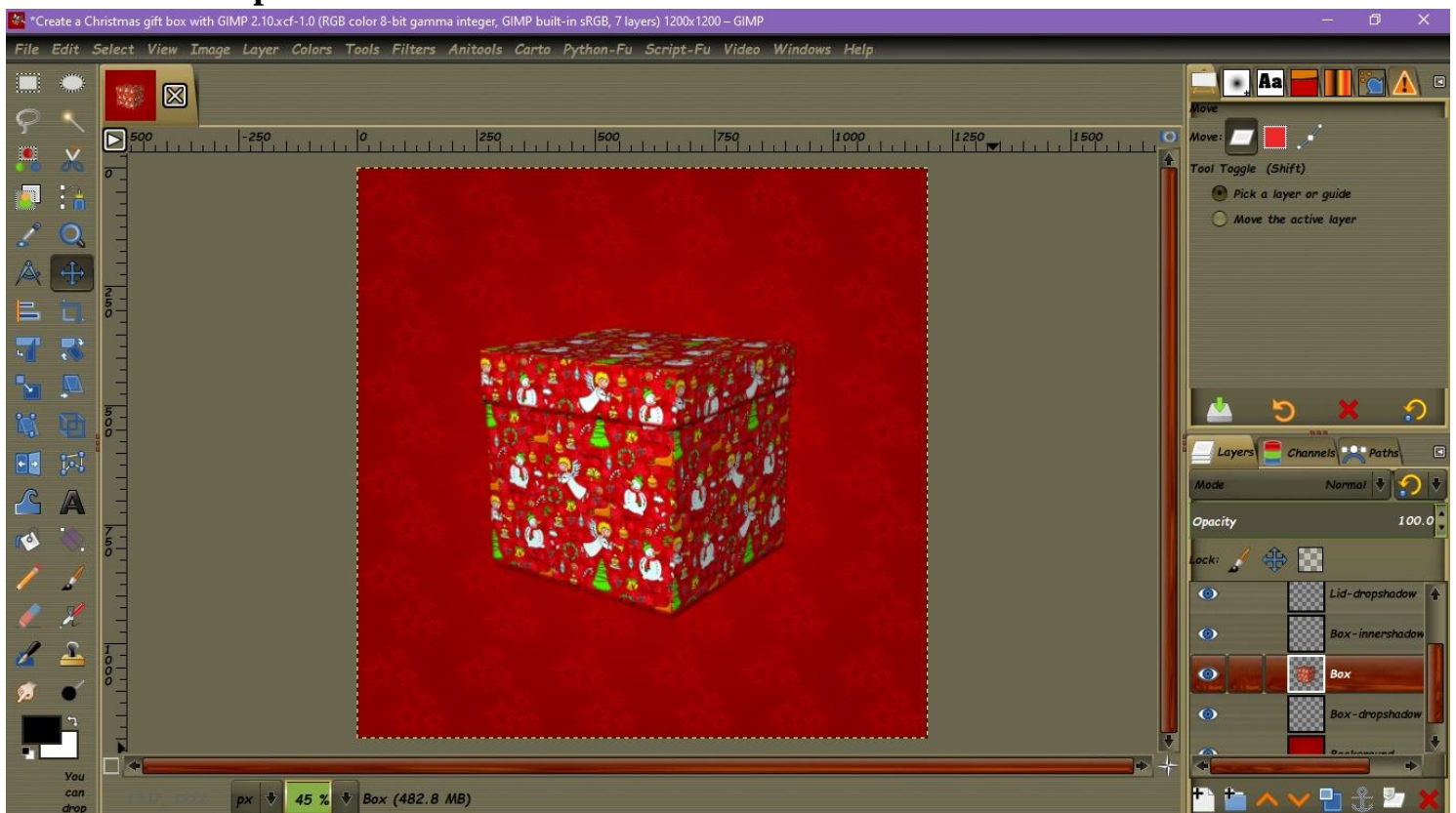
8. We are going to increase the size of the “Lid”. Select the “Scale tool”, go to the options and select “Around Center”. Click on the Canvas and click on the dialog, click on the little chain to break it. Set the Width at> 920 and click Scale to resize the Lid.



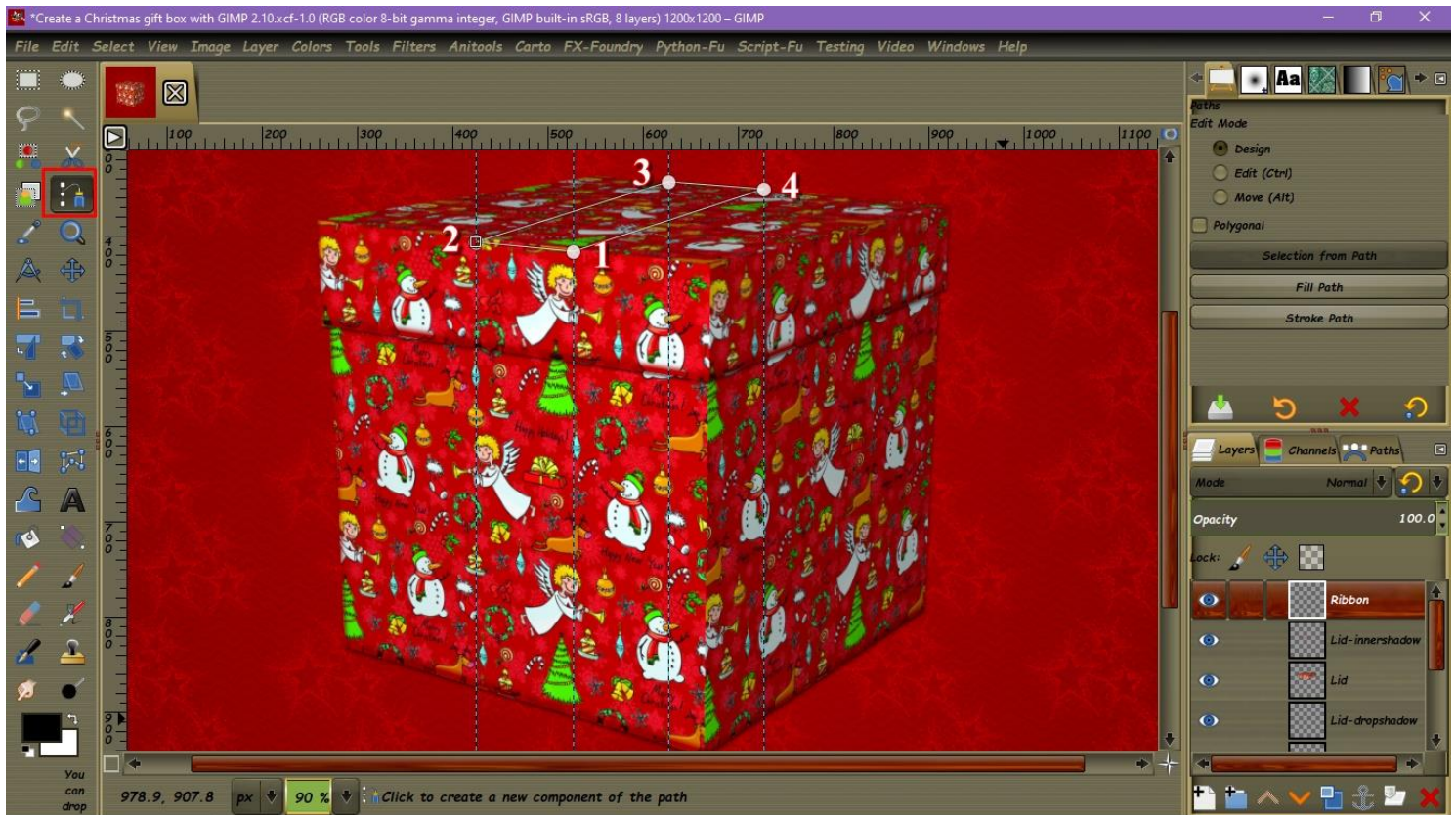
9. Right click both layers “Box, Lid” and select “Layer to image size”. Go to, Layer> Layer Effects> Drop Shadow, set as illustrated and click OK to apply. Go to, Layer> Layer Effects> Inner Shadow and change the color to> c60000. Set the rest of the configurations as illustrated and click OK to apply.



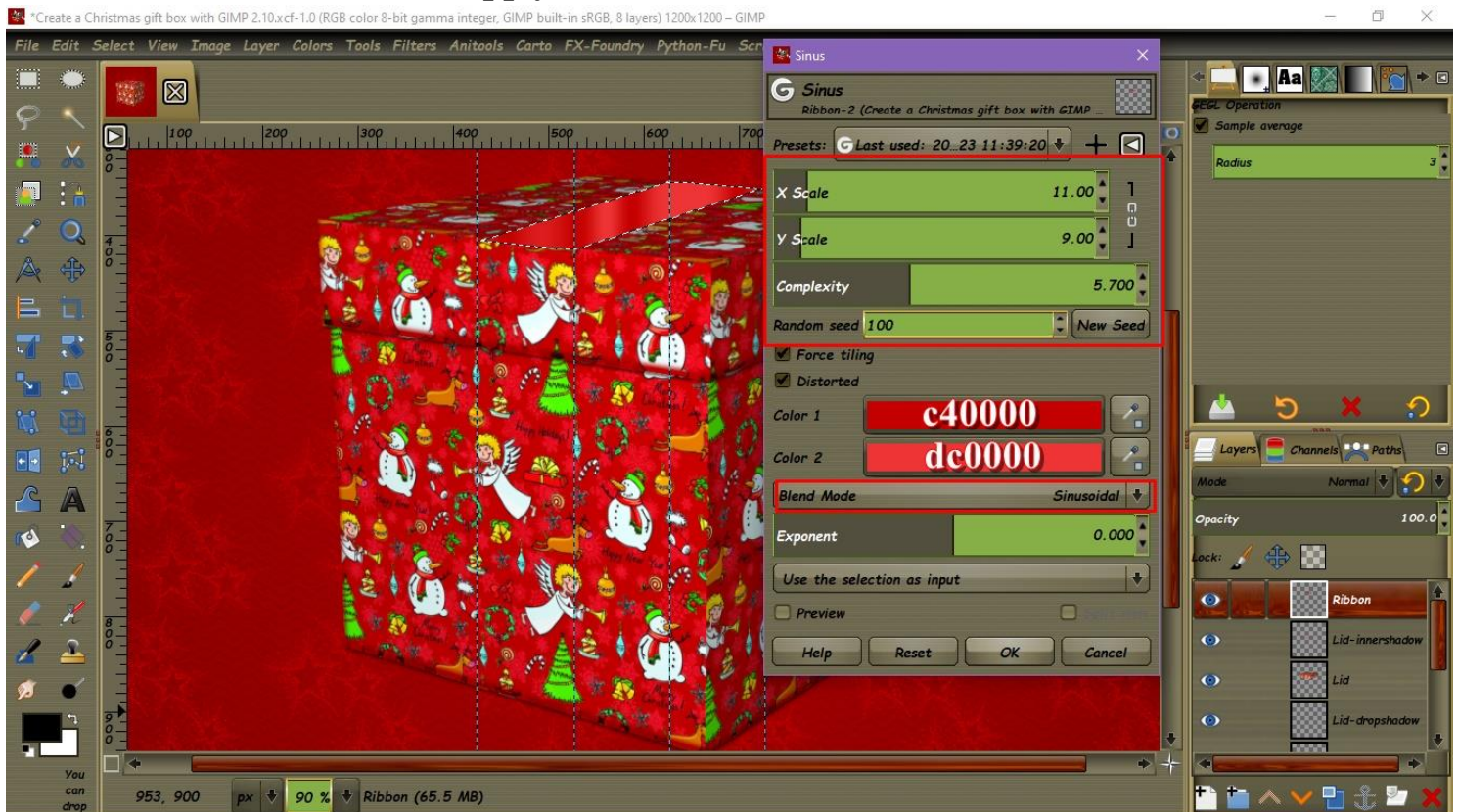
10. Select the Layer “Box”. Apply the same Drop Shadow and the Inner Shadow filter. You Gift Box at this point should look like the one on the illustration.



11. Let's create the Ribbon. Zoom in for better look. Place 4 Vertical guide on the marks> 425, 525, 625 and 725. Select the “Paths tool”, and click on the 4 points where the guides meet the edges of the box lid, as illustrated. Press, “Ctrl” and click on the first point to close it the Paths. Select the “Move tool” and that will make the Paths invisible.



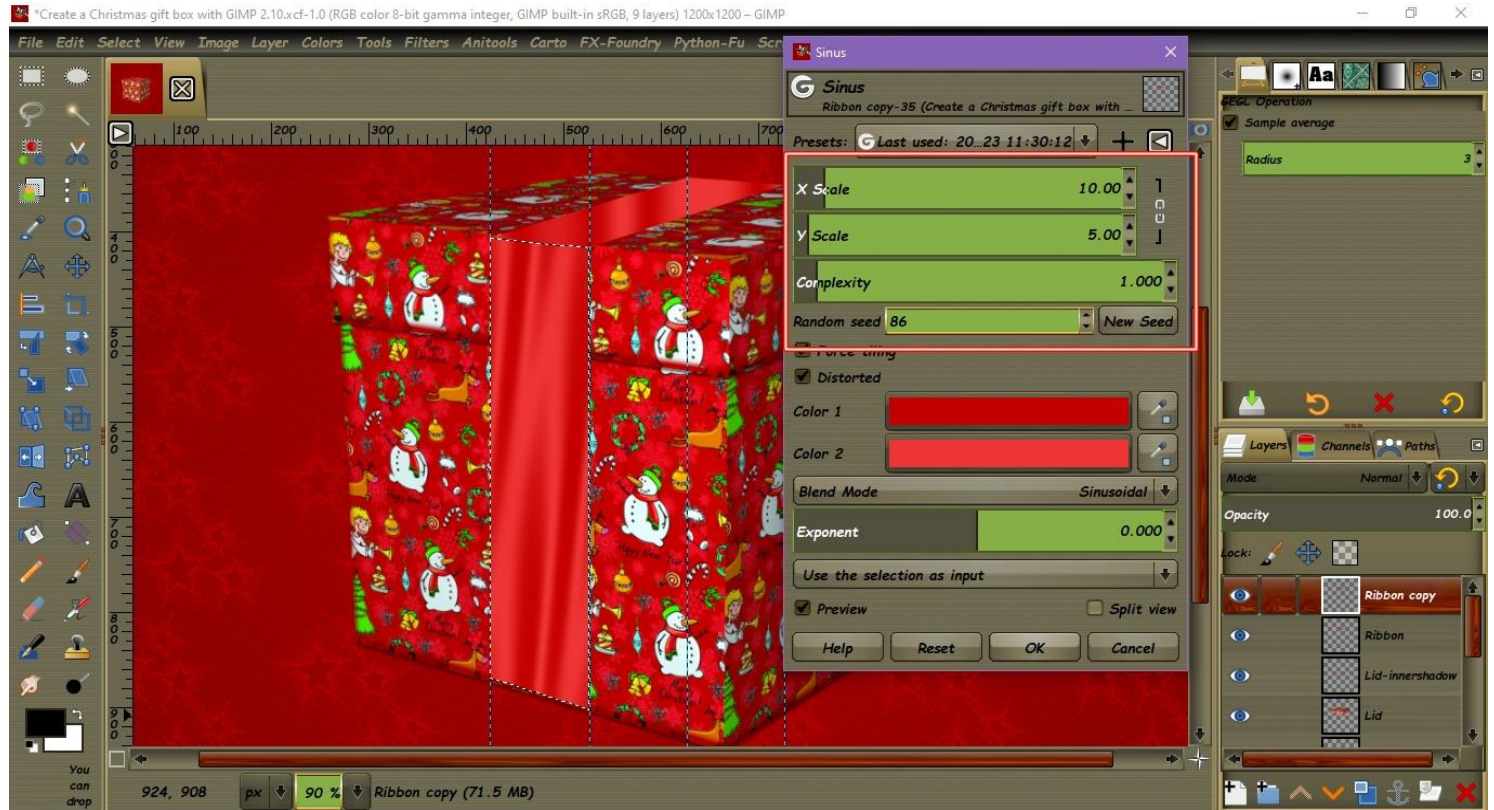
12. Go to, Select> From Path to activate the selection and go to, Filters> Render> Pattern> Sinus. Change Color 1 to> c40000 and Color 2 to> dc0000. Set the rest of the configurations as illustrated and click Ok to apply.



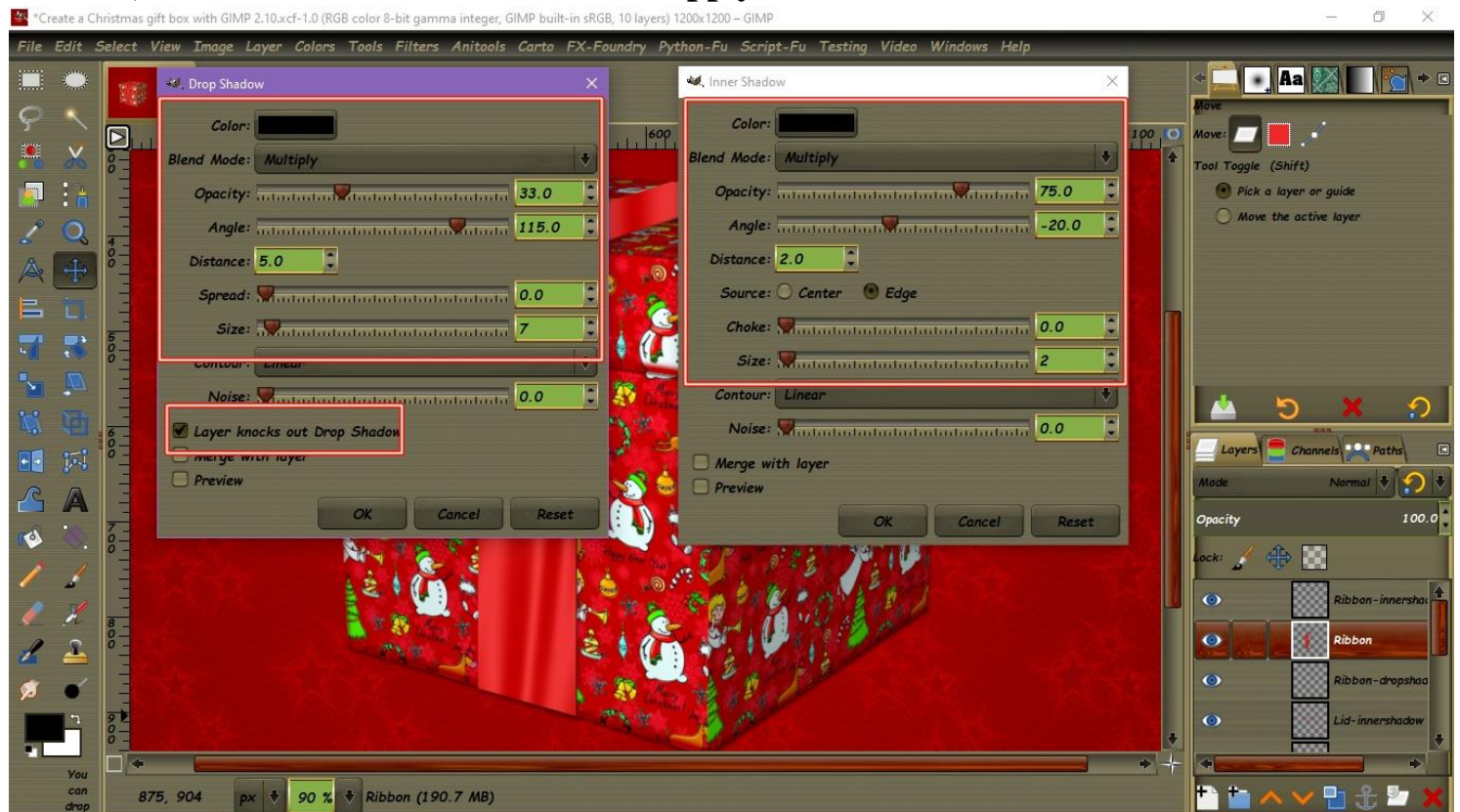
The screenshot displays the GIMP 2.10.xcf-1.0 interface. The main canvas shows a 3D gift box with a red and white patterned paper. The box is being edited with a path tool. The interface includes a menu bar, a toolbar, a canvas with a ruler, and a right-hand sidebar with various tool panels like Paths, Layers, and Channels. The status bar at the bottom shows coordinates (915.6, 907.8) and a path tool icon.

The screenshot shows the GIMP 2.10.2 interface. The main canvas displays a 3D gift box with a red Christmas pattern featuring snow globes, angels, and snow globes. The 'Grow Selection' dialog is open, showing a value of 1 px. The right sidebar shows the 'Layers' panel with 'Ribbon' selected. The status bar at the bottom indicates the image size is 920, 914 px, 90% zoom, and the ribbon layer is 77.5 MB.

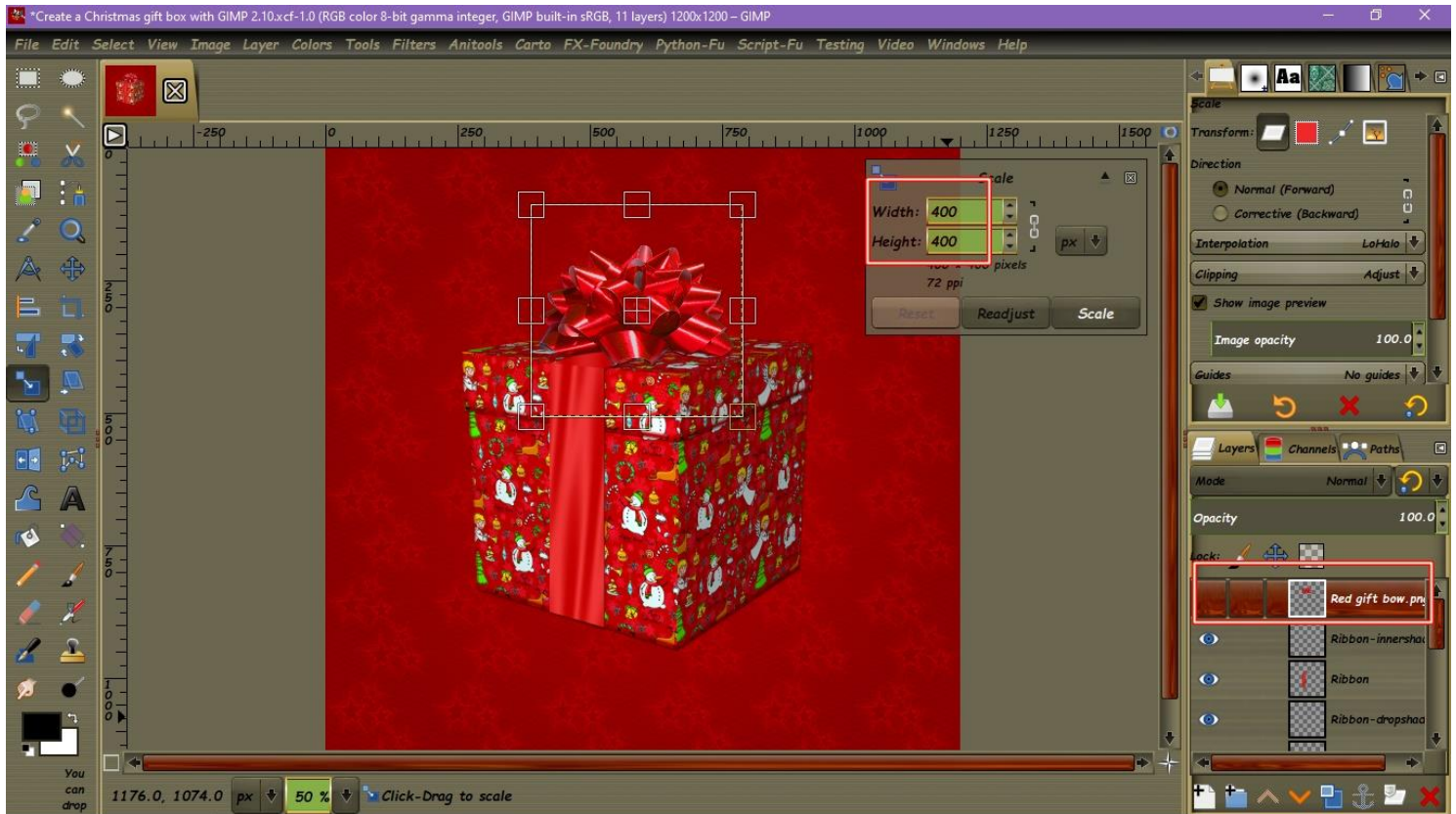
15. Go to, Filters> Render> Pattern> Sinus, change the Top configurations as illustrated and click Ok to apply.



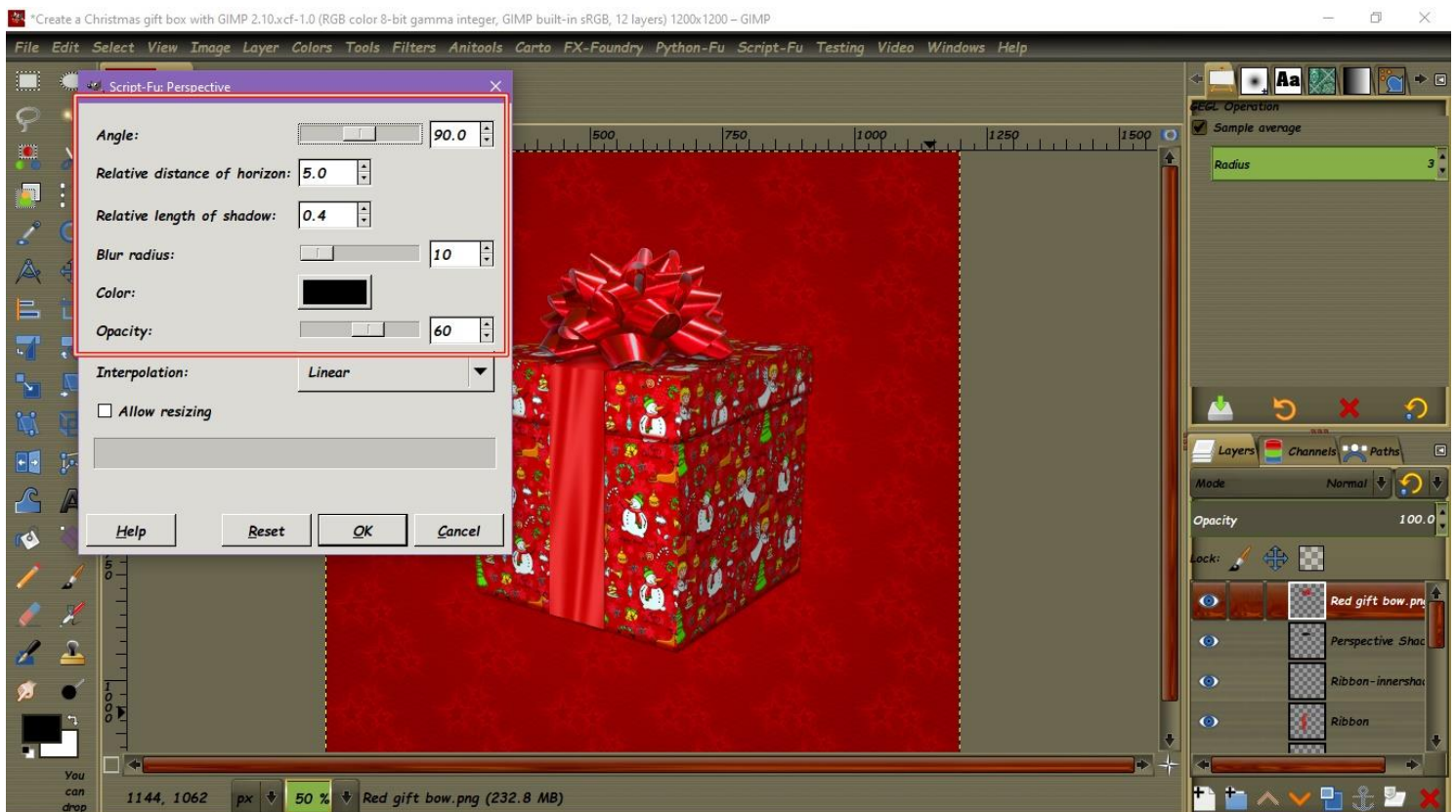
16. Go to, Select> None and get rid of the all the Guides. Go to, Layer> Layer Effects> Drop Shadow, set as illustrated and click OK to apply. Go to, Layer> Layer Effects> Inner Shadow, set as illustrated and click OK to apply.



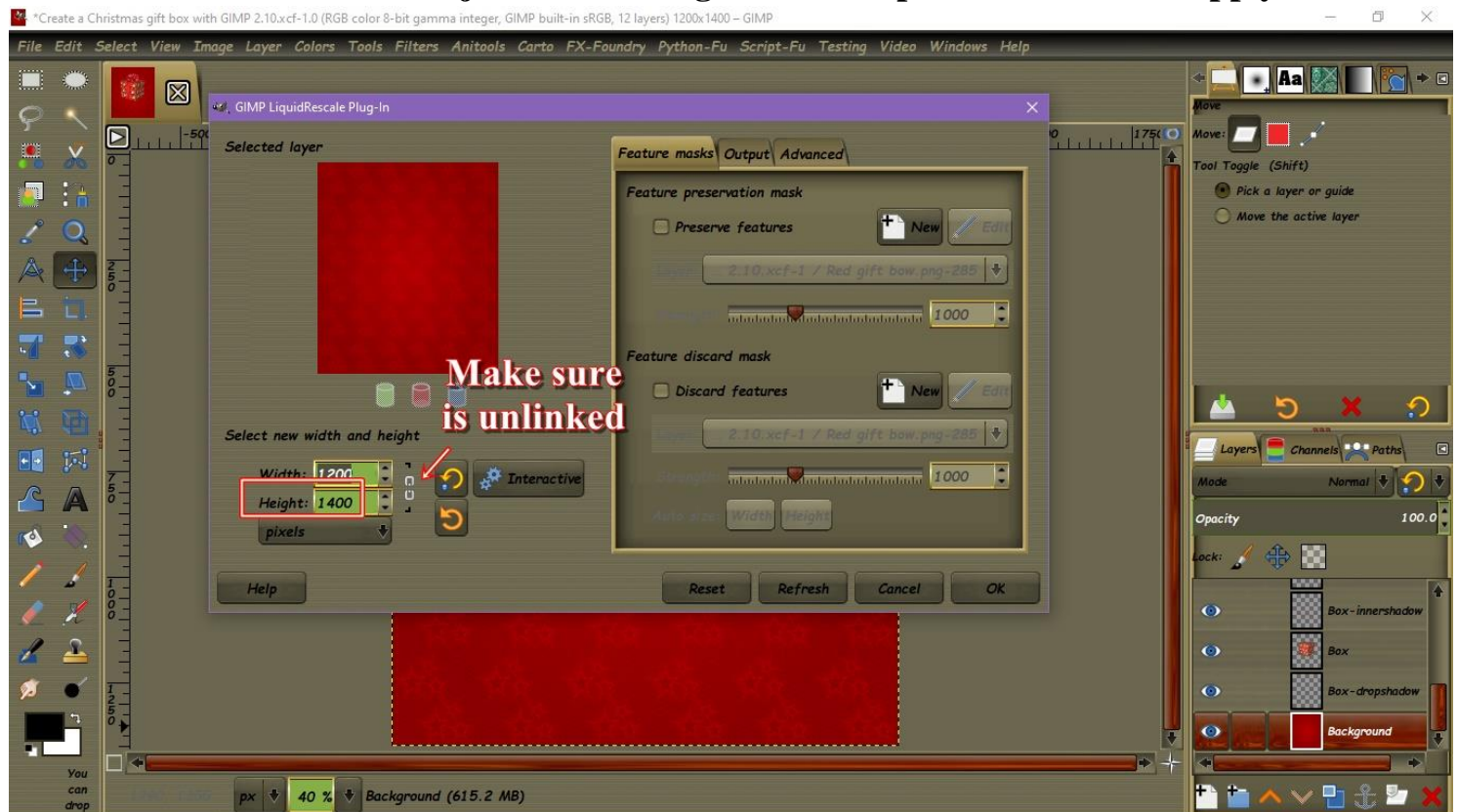
17. Select the Top layer and go to, Files> Open as a Layer the image “Red gift bow”. Select the “Scale tool and reduce the Size to> 400 x 400 px. Place the Bow on the top center of the box.



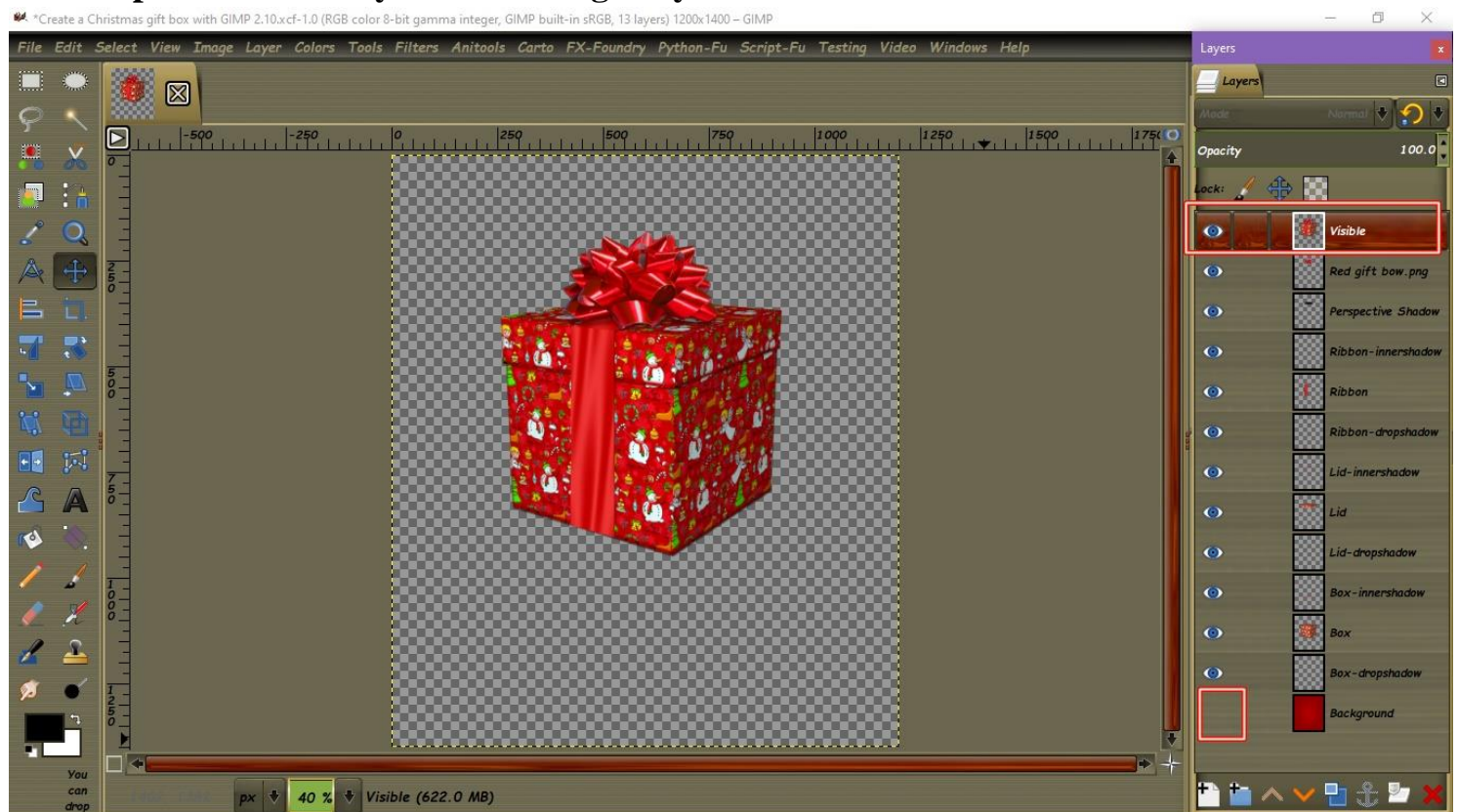
18. We are going to give the Tie soft shadow. Go to, Filters> Lights and Shadows> Perspective, set as illustrated and click OK to apply. You can stop here if you don't want a bottom reflection.



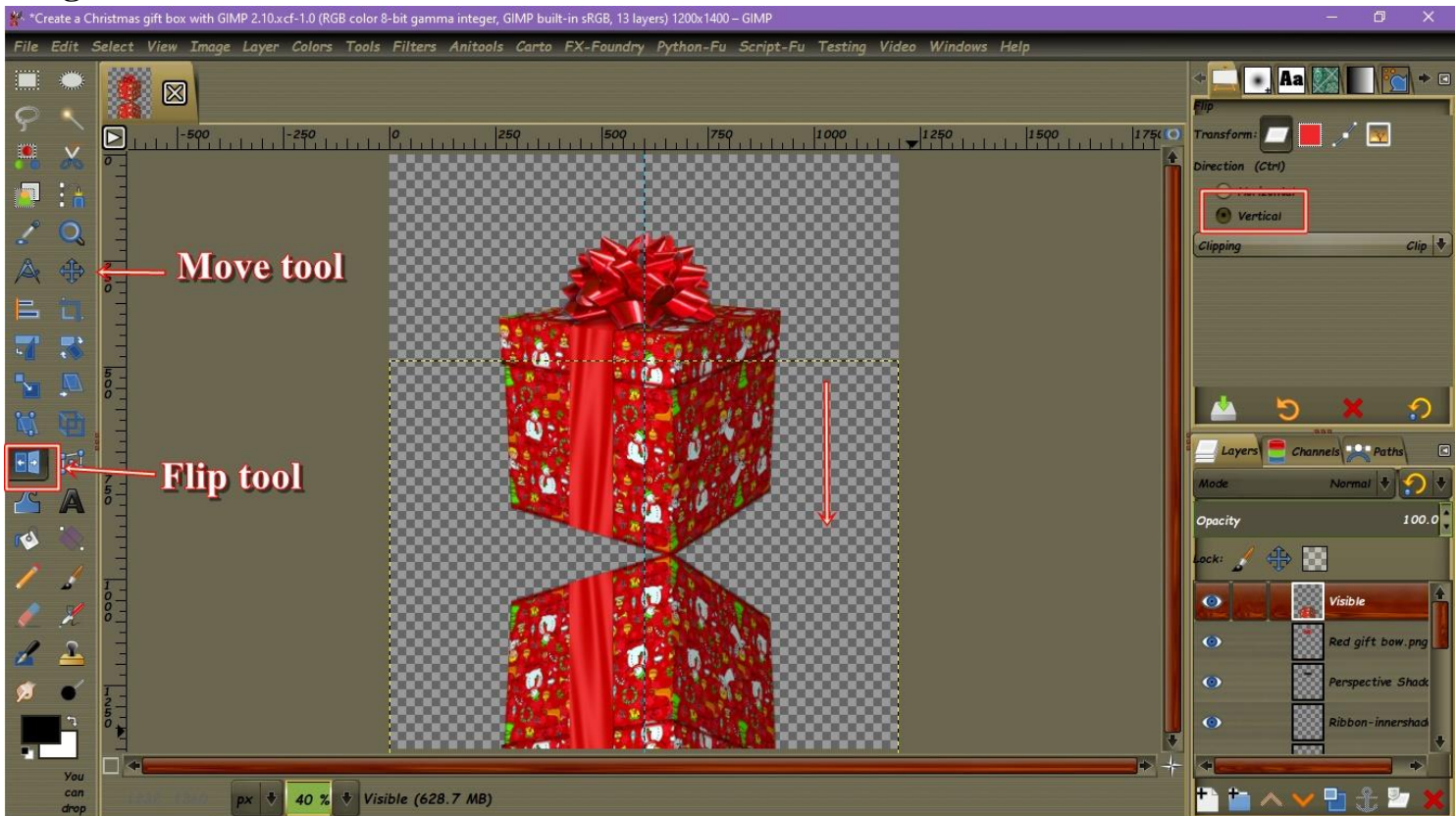
19. The steps to follow are optional, but if you want to learn how to create a reflection with a perspective figure, you can continue with the following steps. We need to enlarge the image Background. So select the layer “Background” and go to, Layer> Liquid Rescale. Make sure the little chain is broken and just set the Height to > 1400 px and click Ok to apply.



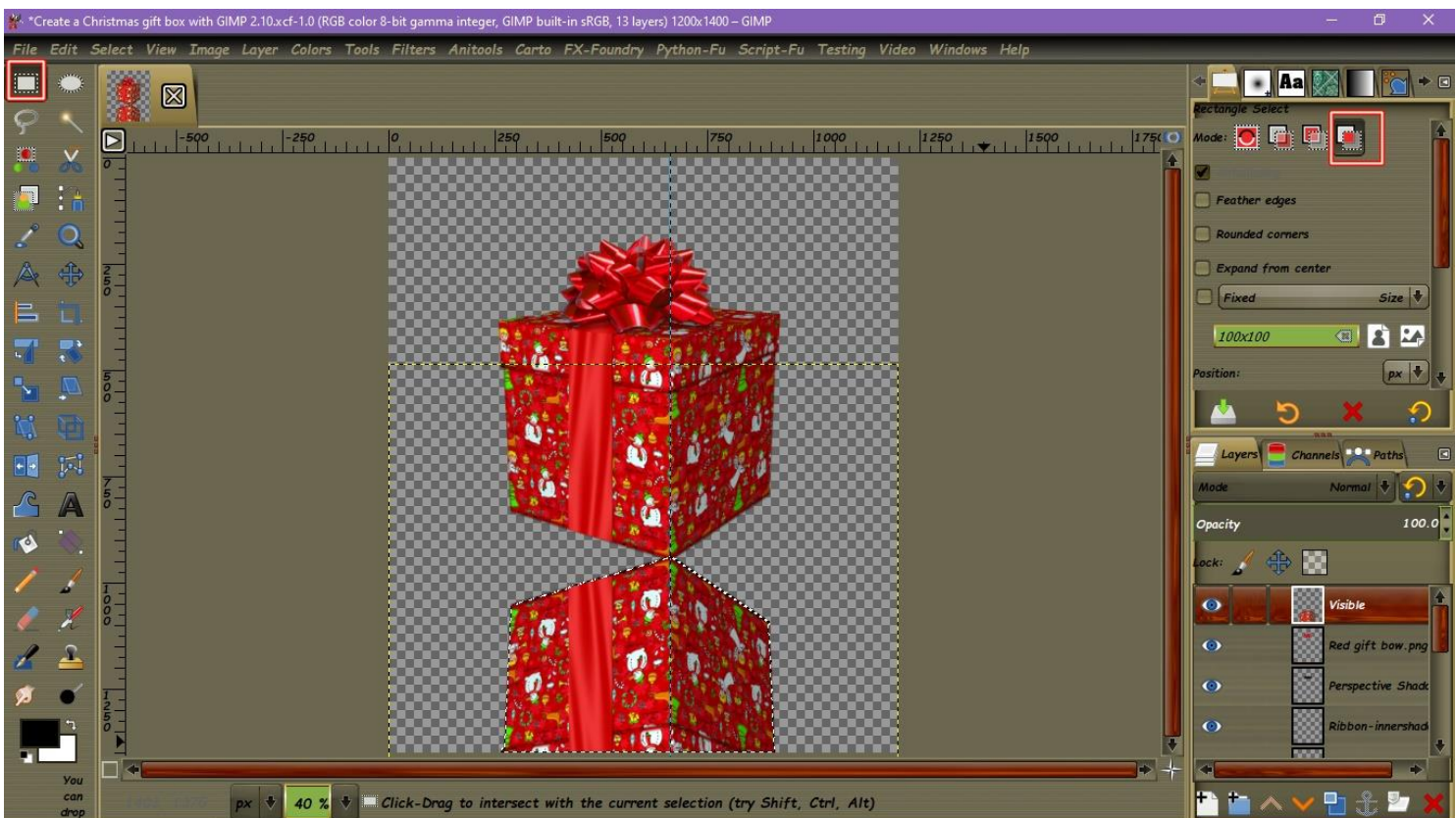
20. Click on the Eyes of the Background layer to make it Invisible, and select the Top layer. Right click this layer and select from the options, “New from Visible”. We have all the effect that we put on all the layers into a single layer.



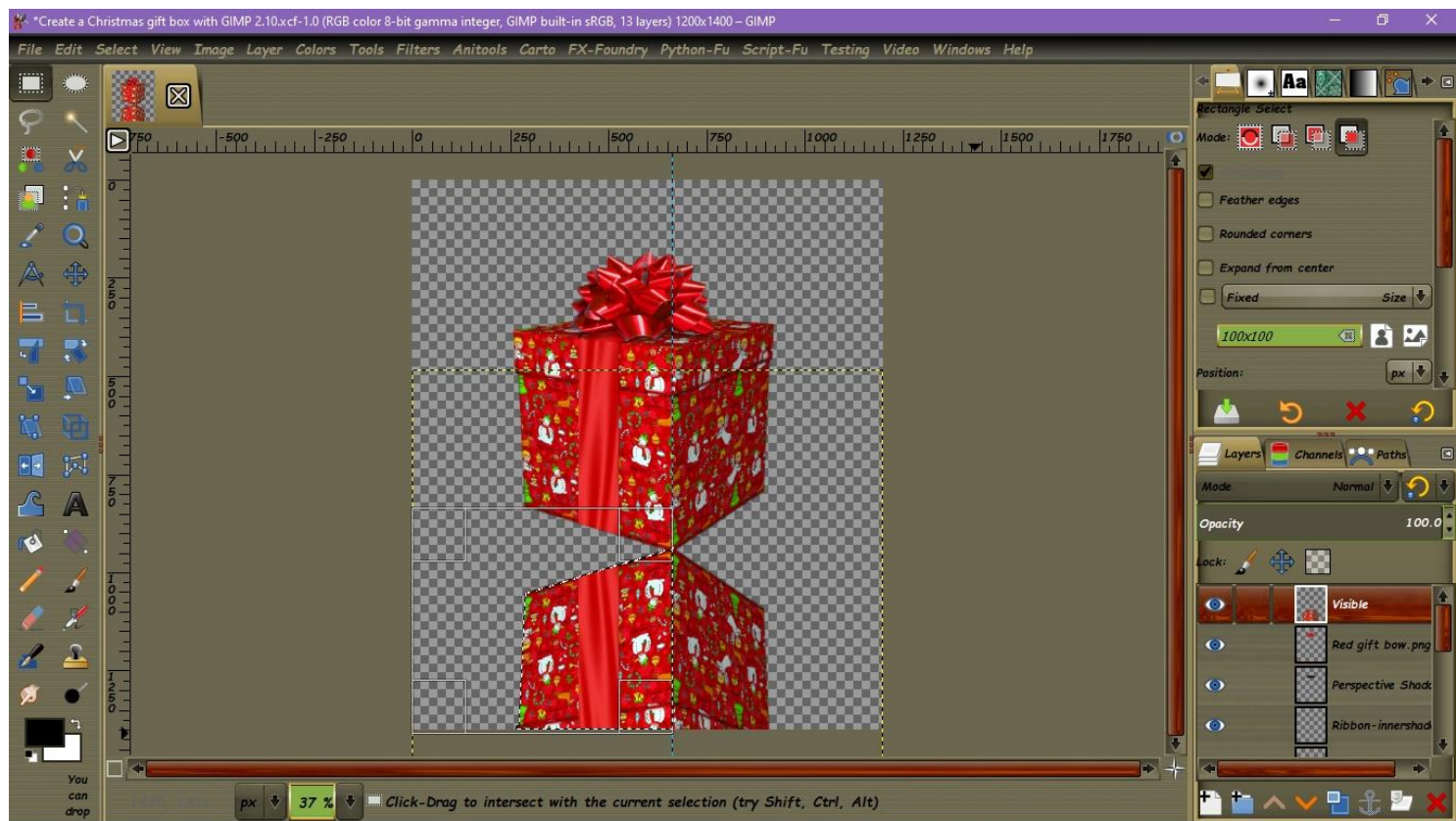
21. Place a Vertical guides on the center of the Canvas (600 mark) and select the “Flip tool”. On the tool’s options, select> Vertical and click once to flip the box. Select the “Move tool”, click on the Box and drag it down the front corners are touching. Use the guide to keep the image centered.



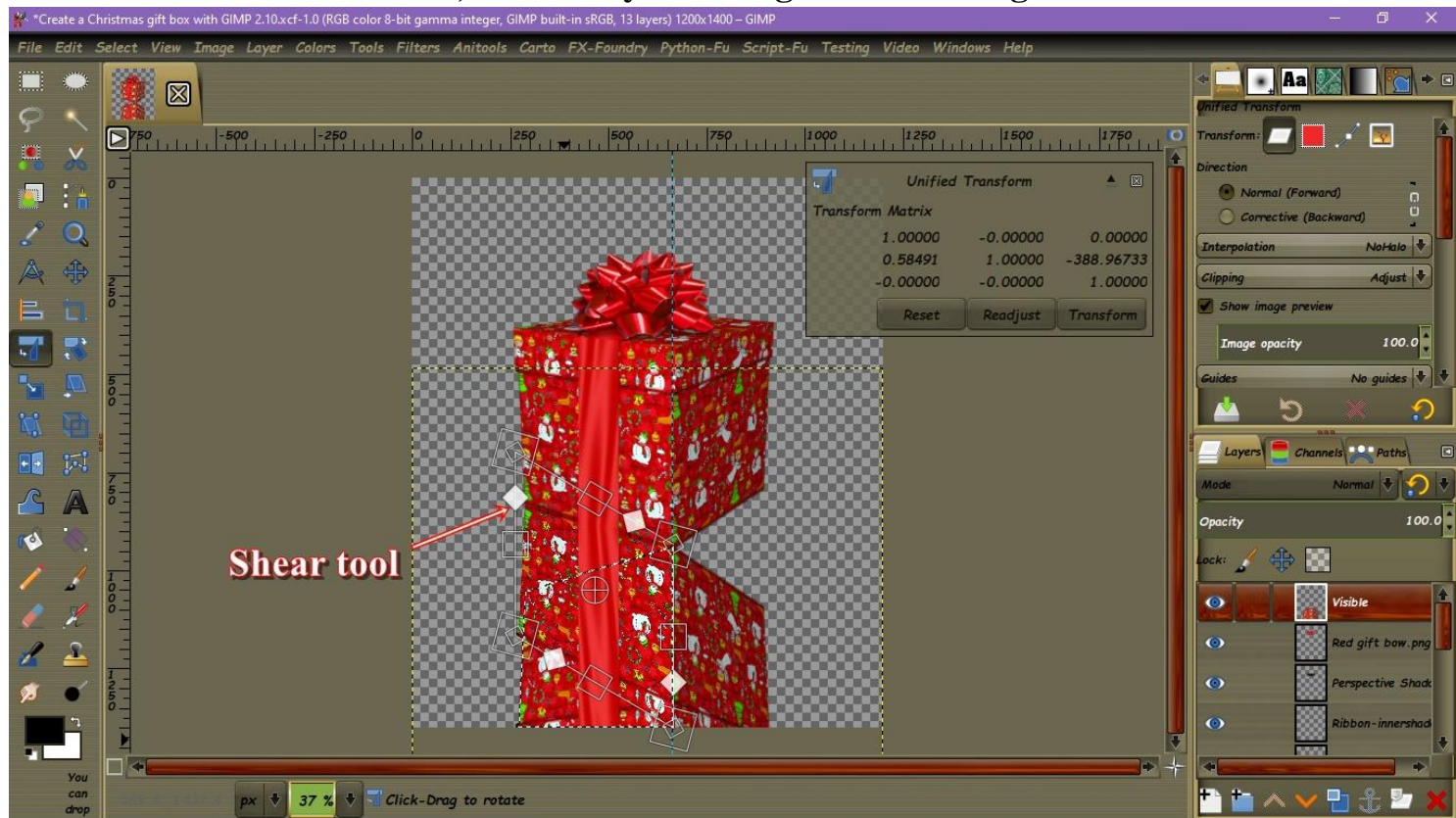
22. Now, take the Vertical guide and place it on the Front corner of box. Right click this top layer and select “Alpha to selection”. Pick up the “Rectangle select tool” and on the options select> Intersect with current selection.



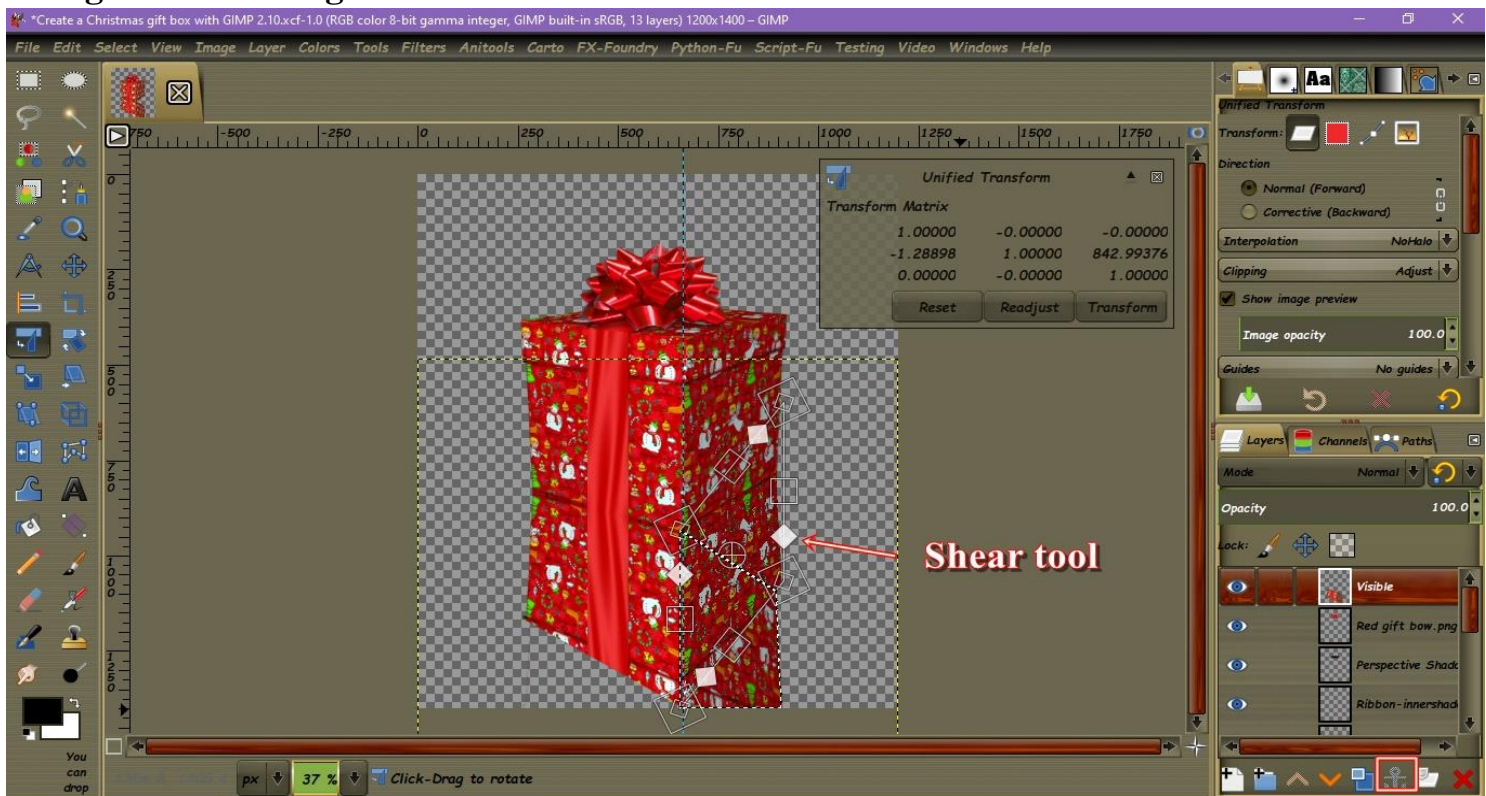
23. Click on the Canvas, create a selection on the Box, on the left side of the Vertical guide as illustrated.



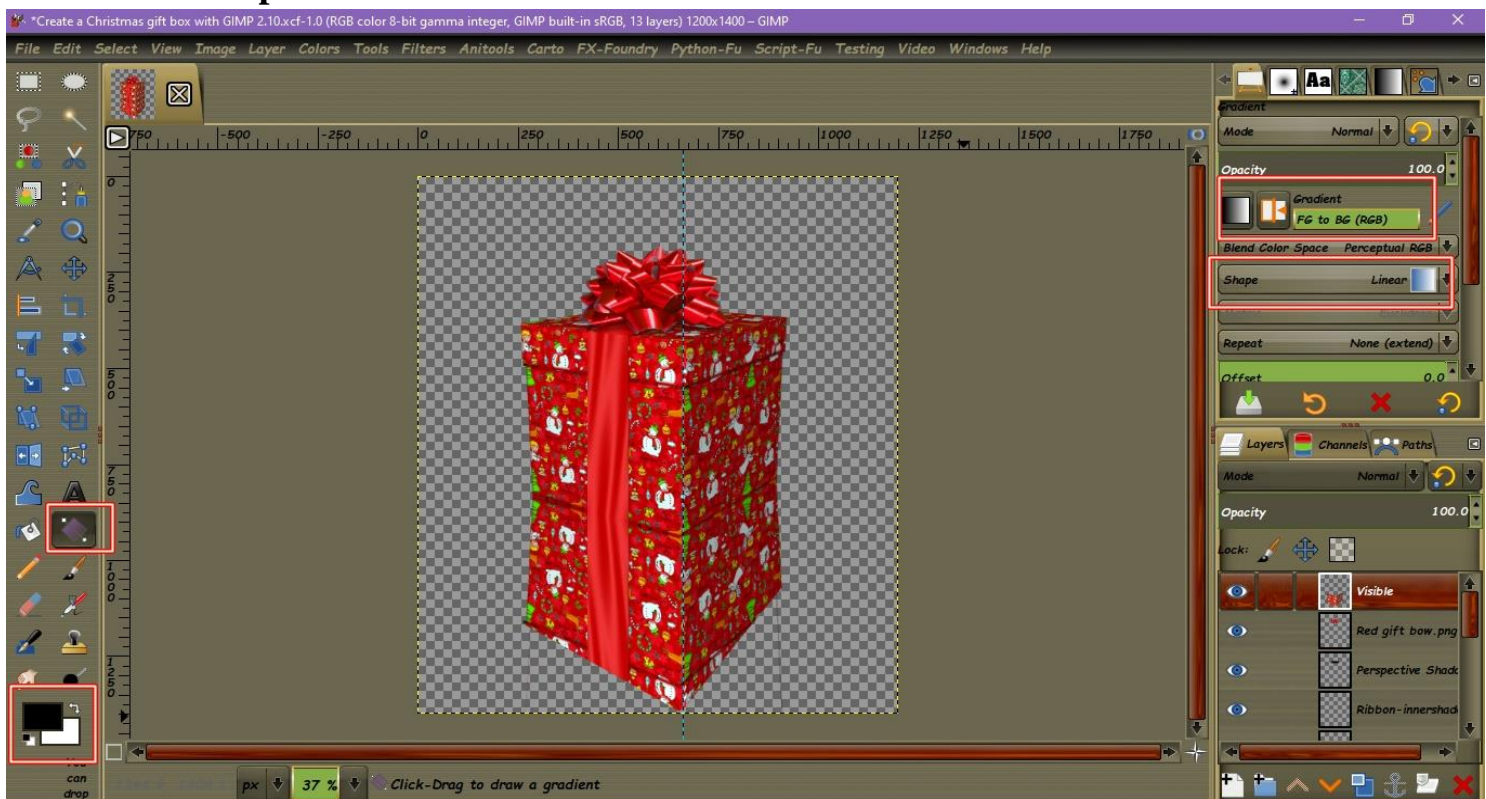
24. Select the “Unified transform tool” and select the White diamond= Shear tool. Bring the selection up until you touch the bottom of the Original image. Click “Transform” to apply and click on the Anchor icon, on the Layers dialog to set the image.



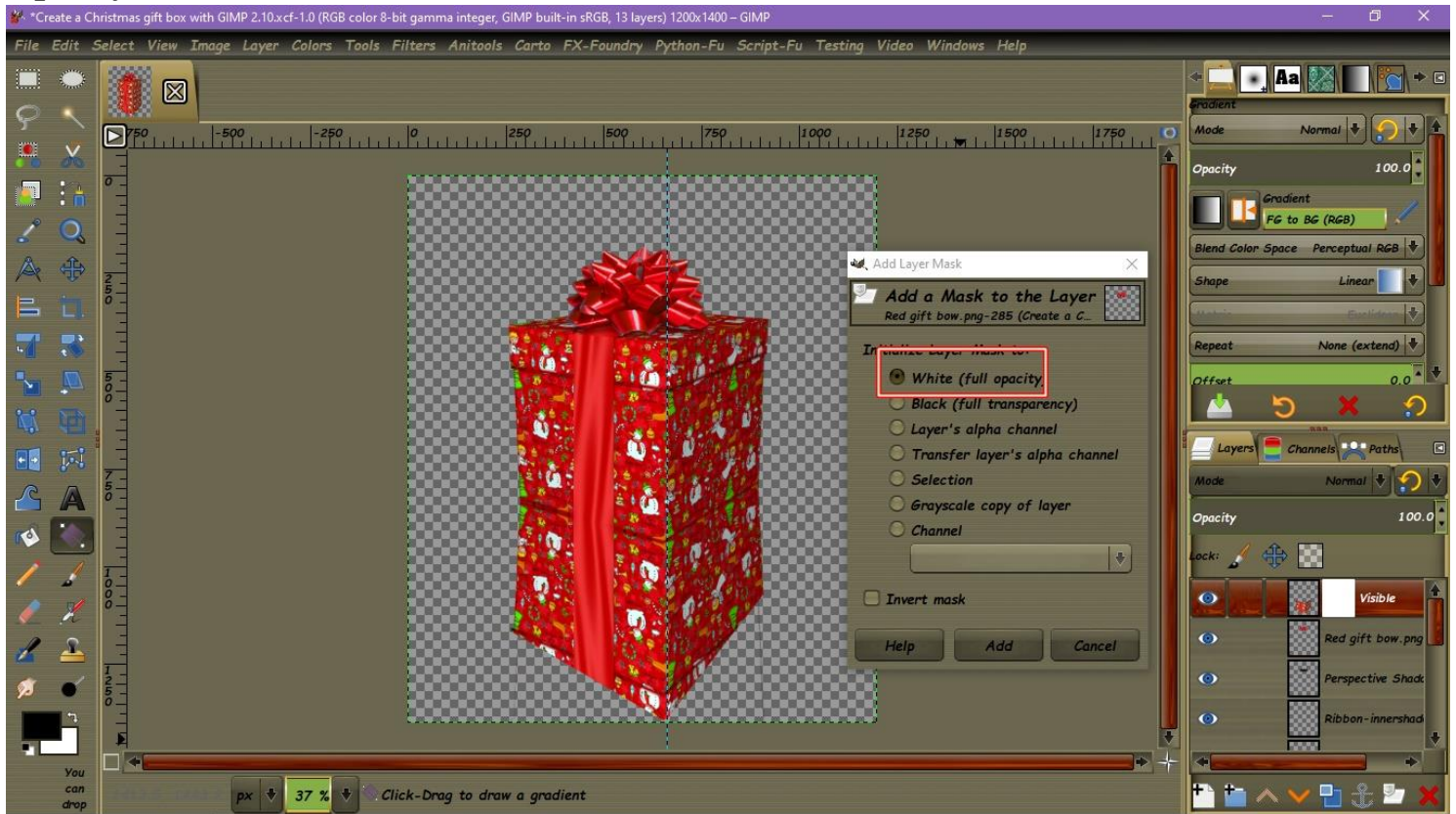
25. Do the same with the right side. Right click this top layer and select “Alpha to selection”. Pick up the “Rectangle select tool”, click on the Canvas, create a selection on the Box, on the Right side of the Vertical guide as illustrated. Select the “Unified transform tool” and select the White diamond= Shear tool. Bring the selection up until you touch the bottom of the Original image. Click “Transform” to apply and click on the Anchor icon, on the Layers dialog to set the image.



26. Select the “Gradient tool” and go to the tool’s options. Make sure the Gradient> FG to BG and the Shape> Linear.



27. On the Layers dialog click on Add Mask icon and select from the option “White(Full Opacity). Click> Add.



28. Using the Vertical guide click on the half of the bottom Box. Drag the gradient up haft of the way of the Original Box and you have completed this wonderful tutorial.

