

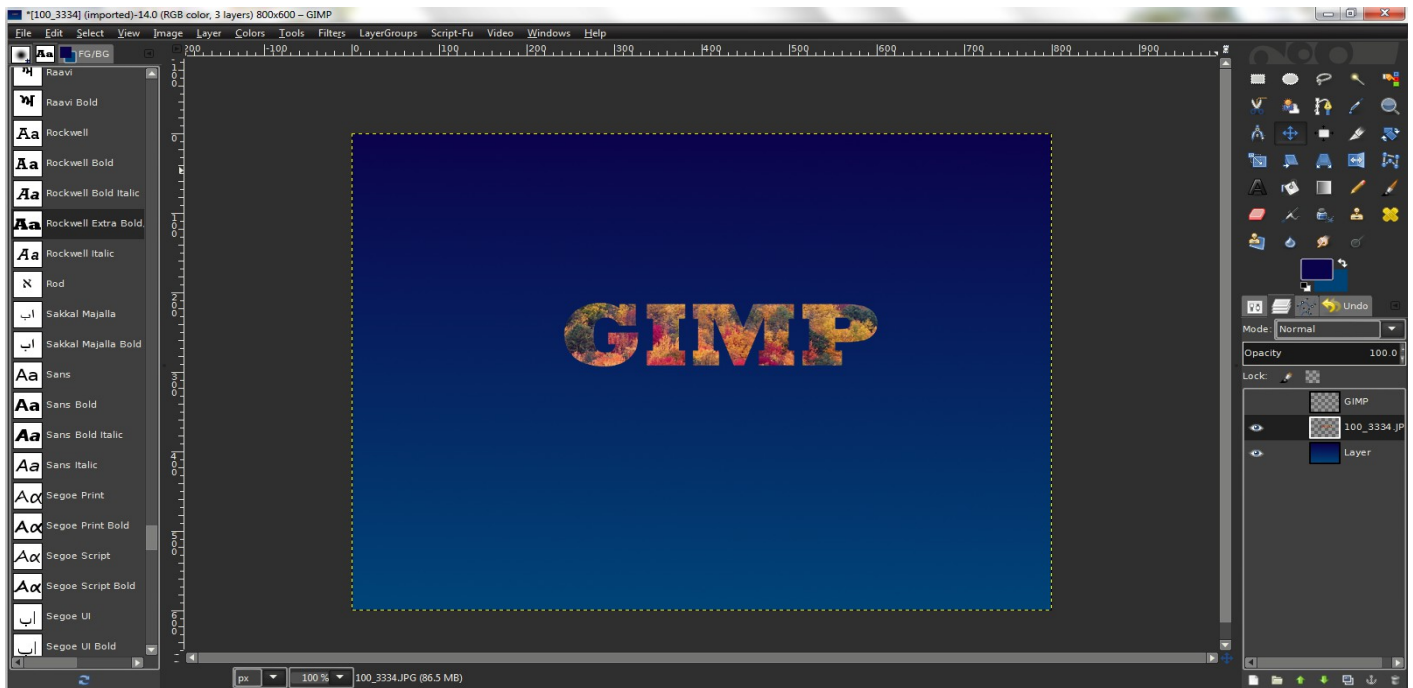
3D text out of a picture



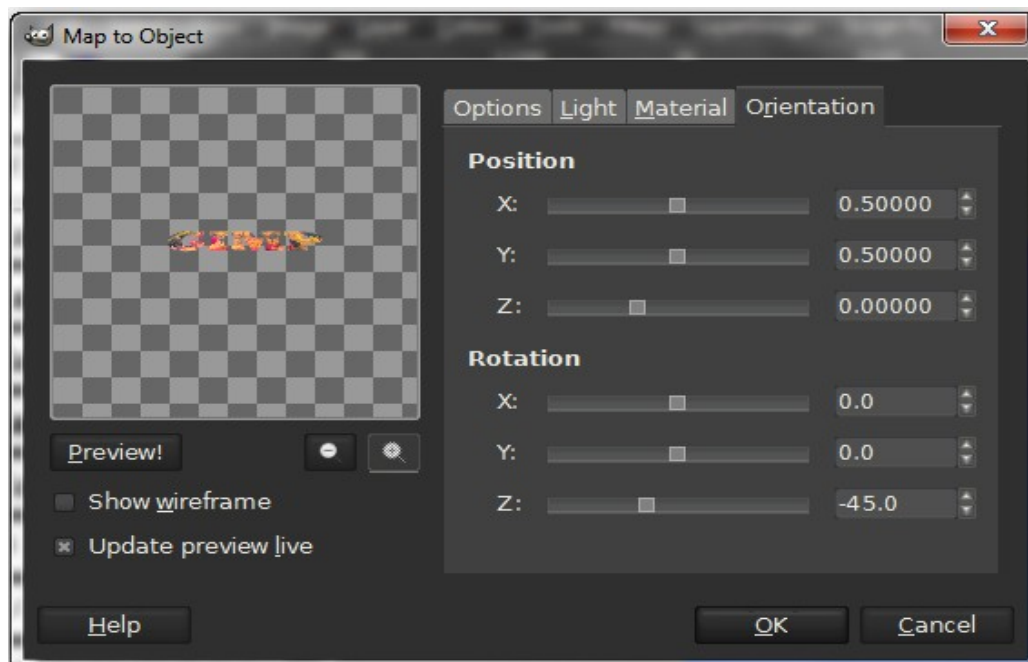
Alpha to selection text - delete

Select- invert
Turn off text layer
Highlight picture layer- delete
Select- none
Delete text layer

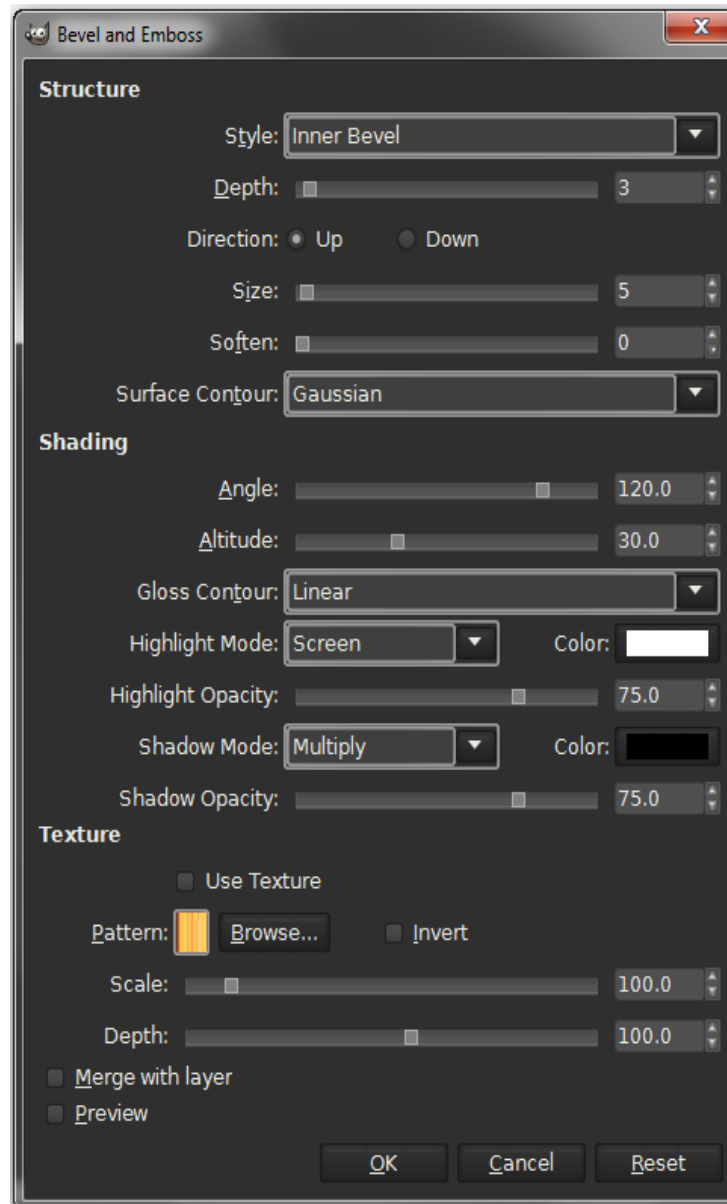
(I added a background layer so I could see the text better)



Map to object
Transparent background
Plane
Orientation tab
Defaults except for rotation (-45.)

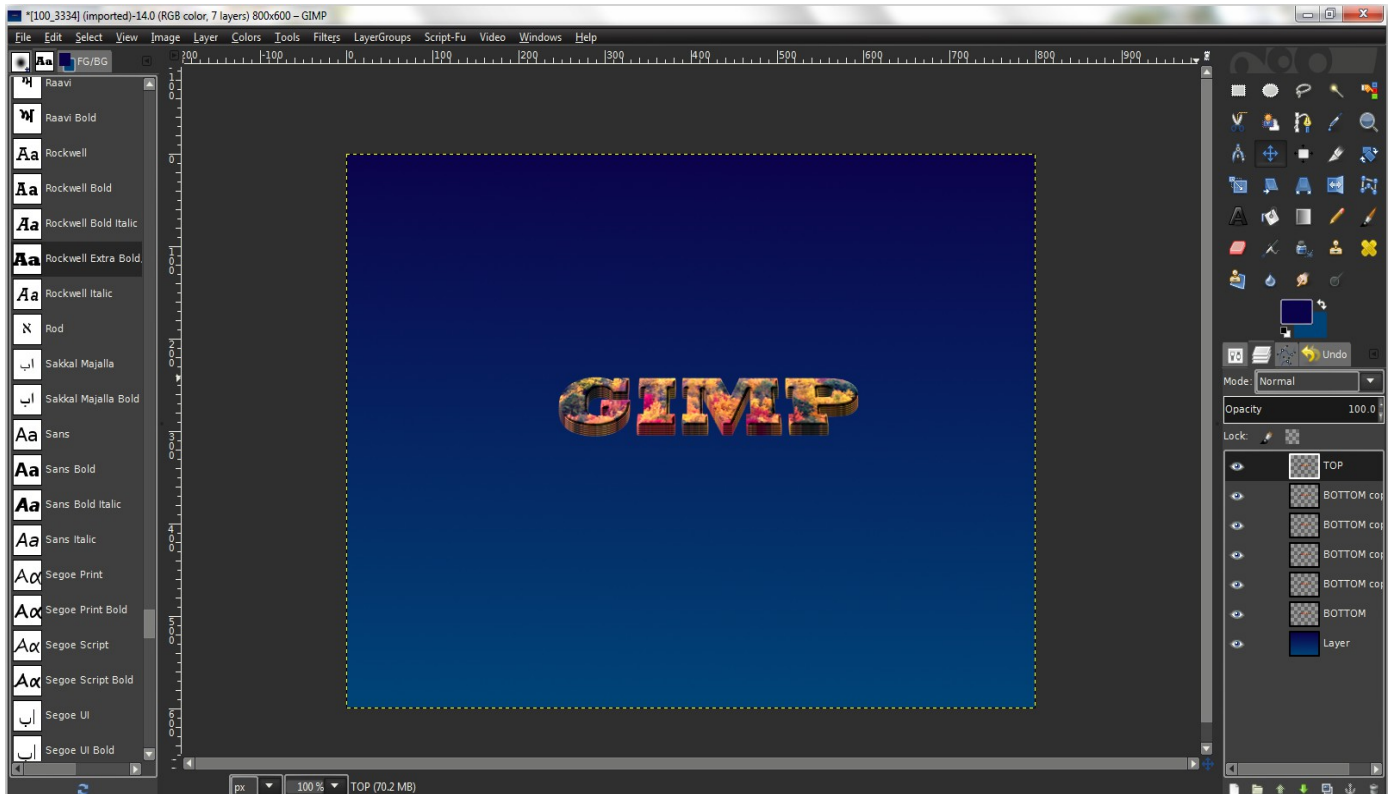


Layer effects- bevel and emboss



(Try different settings)

Rename layer- 'top'
Duplicate layer, name it- 'bottom'- move it under “top”
Move tool- move bottom layer down 2 pix (arrow key)
Duplicate new bottom layer- move down 2 pix
Repeat 4 or 5 times



Drop shadow to bottom layer

