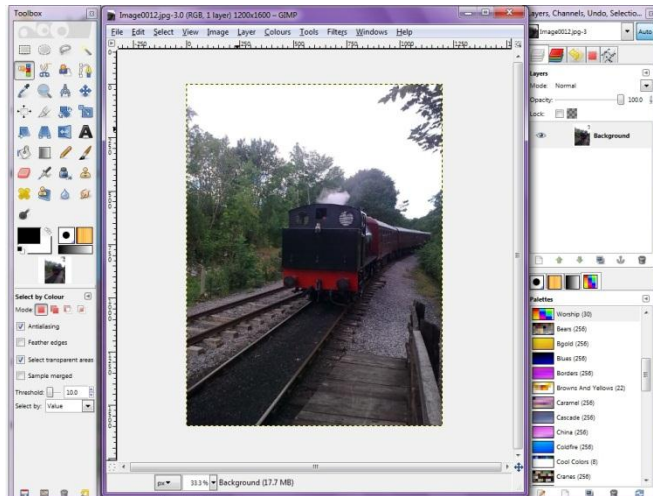
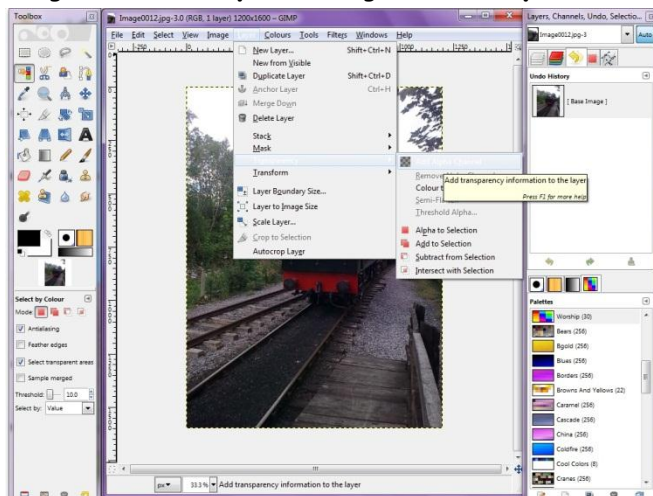


Photograph to Indian Ink Style Painting

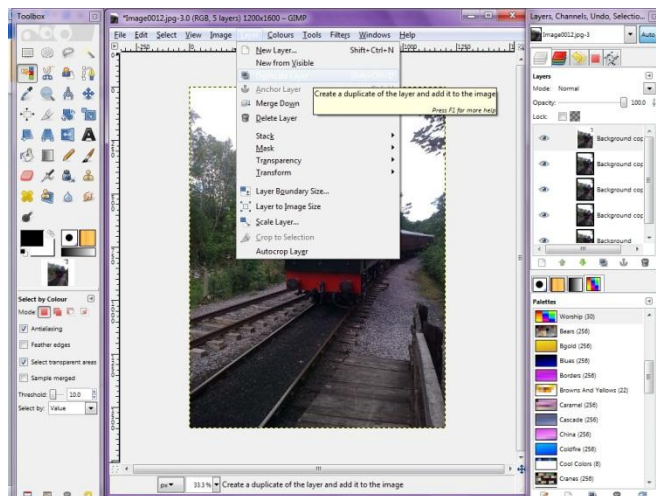
I. Load desired image into gimp.



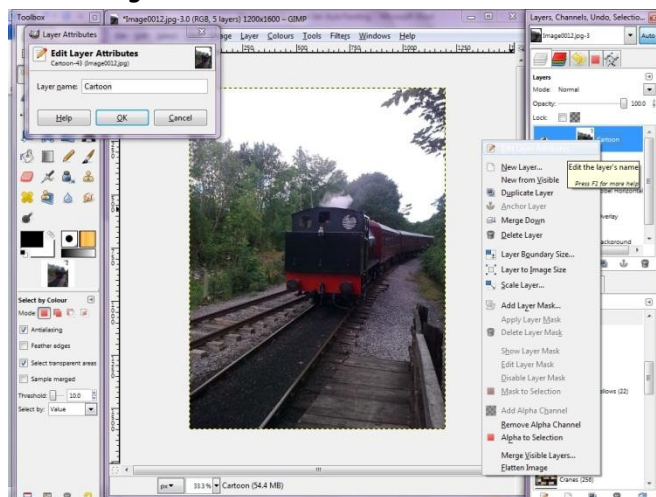
II. Add transparent channel to layer by Layer>Transparency>Add alpha Channel



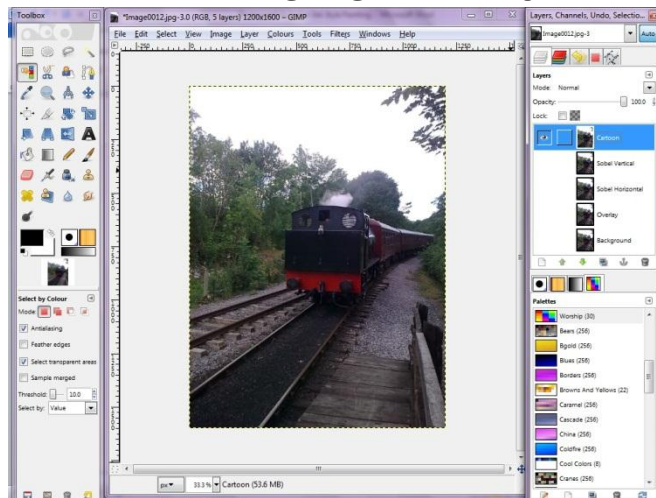
- III. Next go Layer>Duplicate Layer and repeat 4 times, you should now have 5 layers showing in the layers Dialogue window.



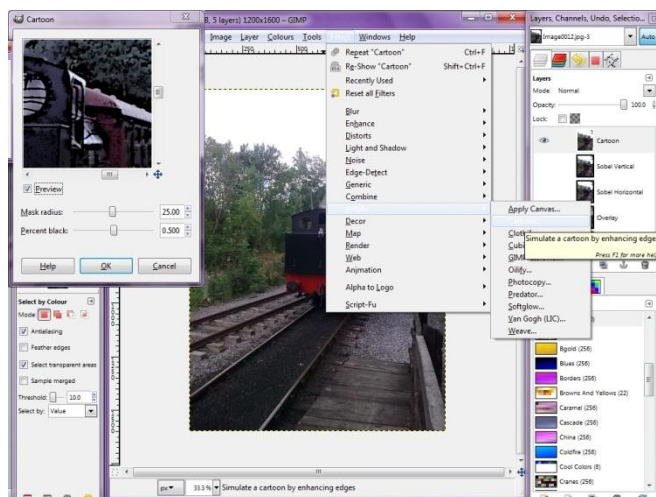
- IV. Rename Layers by Right clicking on desired layer and selecting Edit Layer Attributes, this open up a new window where you can rename Layer, Name Layers from top to Bottom as Cartoon, Sobel Vertical, Sobel Horizontal & Overlay.



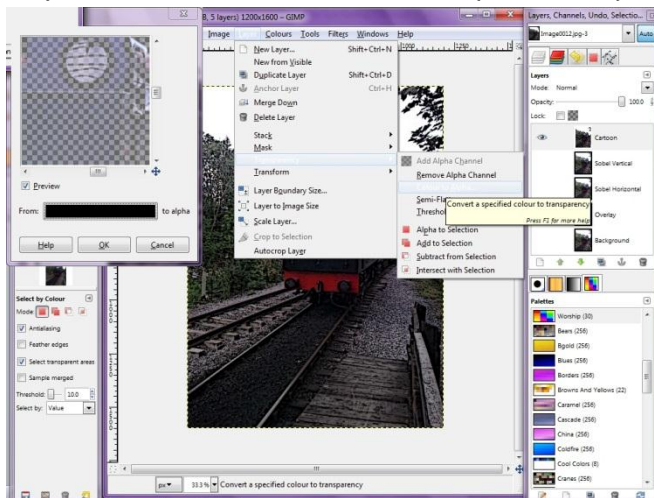
- V. Next deselect all Layers apart from the top layer Named Cartoon and Highlight this layer.



- VI. Next go Filter>Artistic>Cartoon, This opens up the Cartoon window, Set Masked Radius > 25 and Percent Black to 0.500 then click OK.

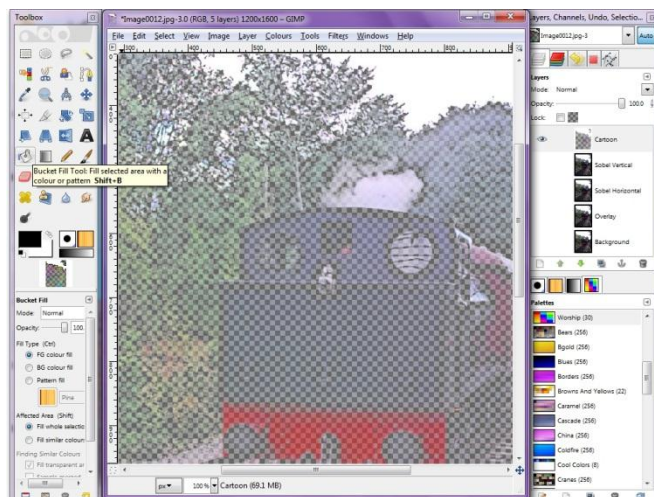


- VII. Still on Cartoon Layer go, Layers>Transparency>Colour to Alpha set colour to Black (000000), Then Click OK.**

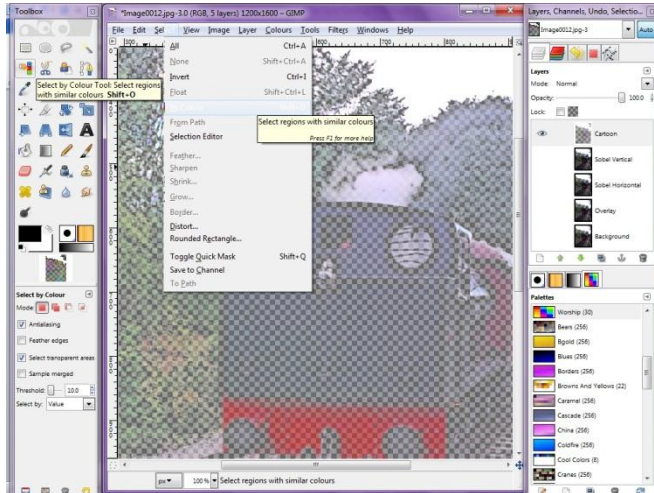


- VIII. Depending on size of Image the next few steps can be quite slow.**

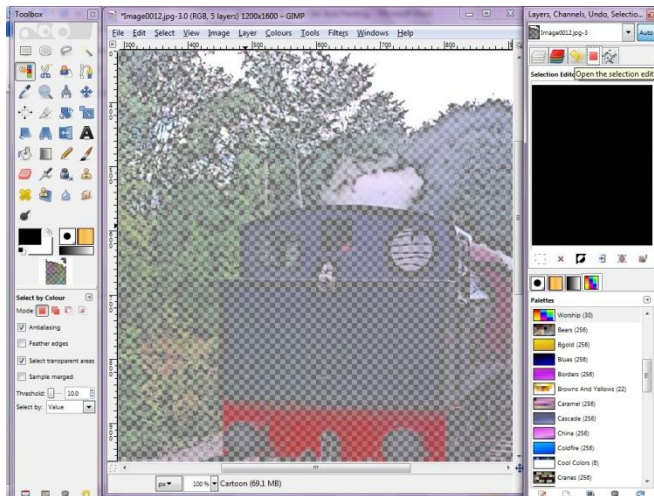
- IX. First Make sure Foreground colour is set to Black and Bucket Fill tool is set to Fill>Foreground and Affected area>Fill Whole Selection.**



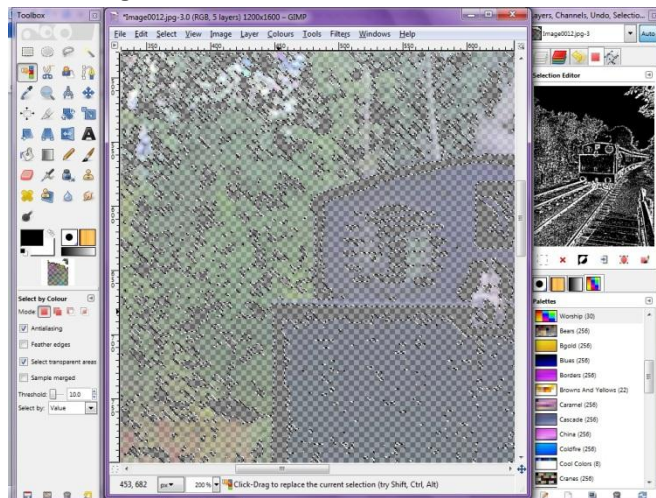
- X. Either Click on the Colour selection tool or go **Select>By Colour**, Make sure the settings for select by colour are, **Mode>Replace Current selection** and that the only boxes checked are the **Antialiasing** and **Select Transparent areas** also set **Threshold** to 10 and change select by to **Value**.



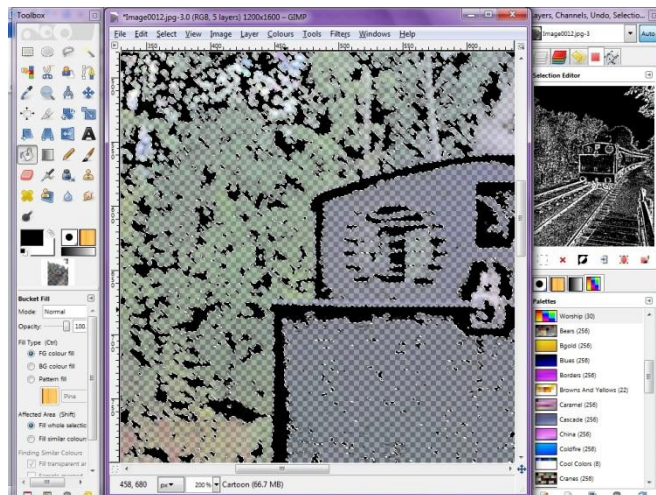
- XI. Open the Selection Editor window.



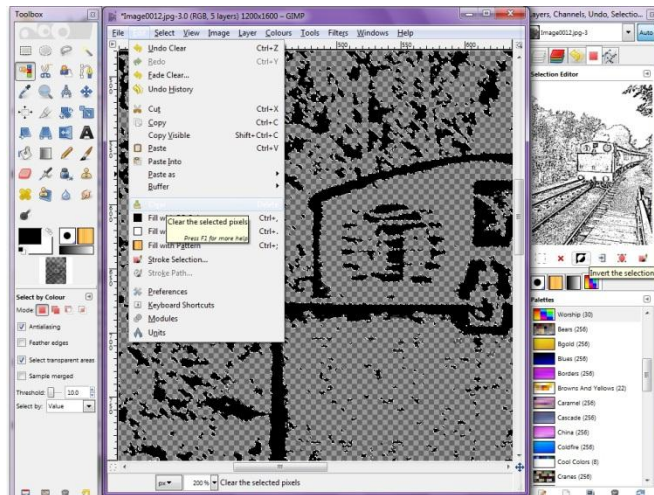
XII. Zoom in on image and Left click on a pure transparent part of the Layer.



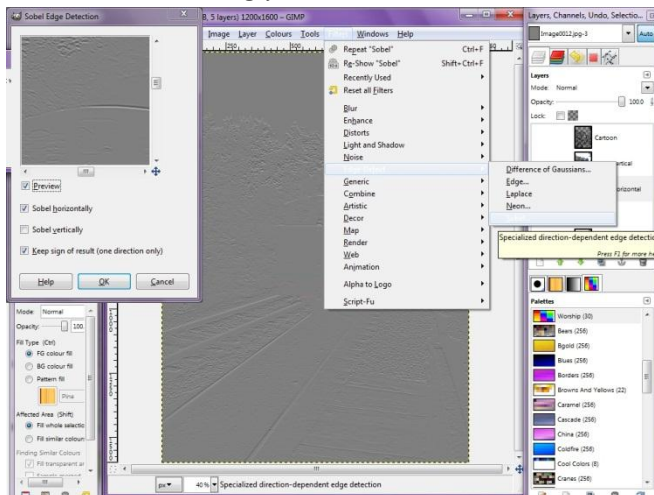
XIII. Select the Bucket Fill Tool and fill Selection with Black.



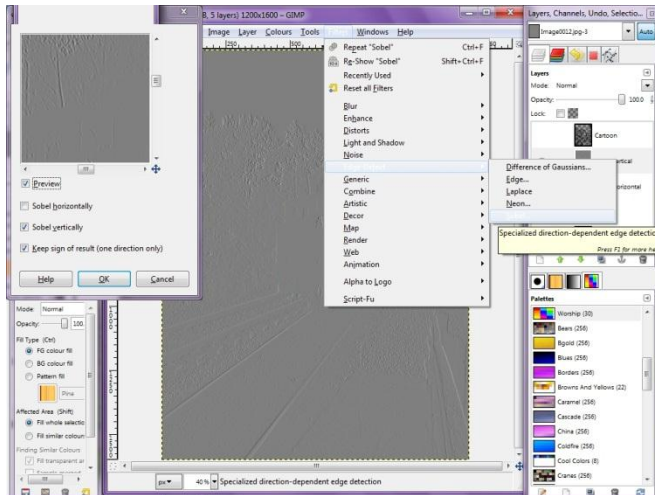
- XIV. On Selection Editor Window left click the Icon to Invert selection, Then Either press the Delete Key on your keyboard or go Edit>Clear. Then delete selection by clicking on the Red Cross in the Selection Window. This should leave just a black outlined Image, so Change Layer Name to Black Outline.**



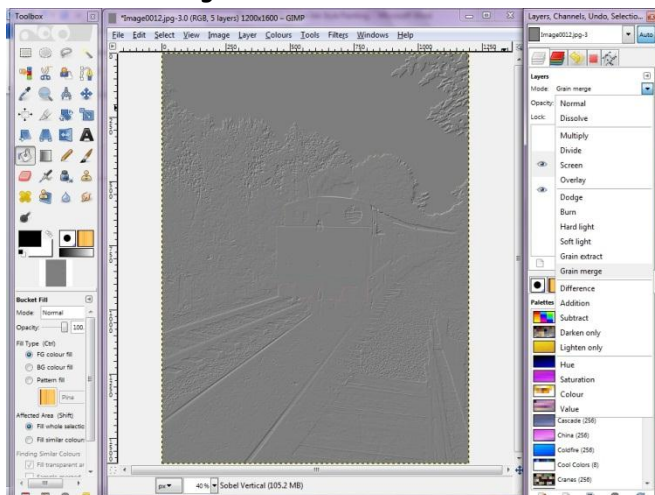
- XV. Deselect Black Outline and Select Sobel Horizontal Layer, Highlight Layer, then Go filters>Edge detect>Sobel, Check Boxes Sobel Horizontal and Keep Sign of result (one Direction Only), Then Click Ok.**



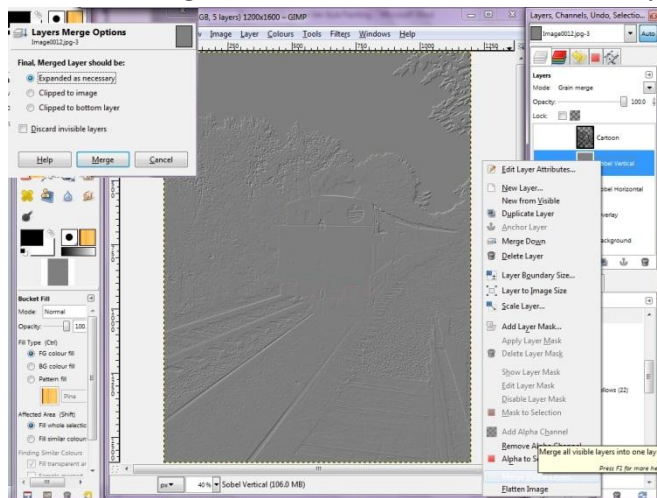
- XVI. Select and Highlight Sobel Vertical Layer, then go filters>Edge detect>Sobel, Check Boxes Sobel Vertical and Keep Sign of result (one Direction Only), Then Click Ok.**



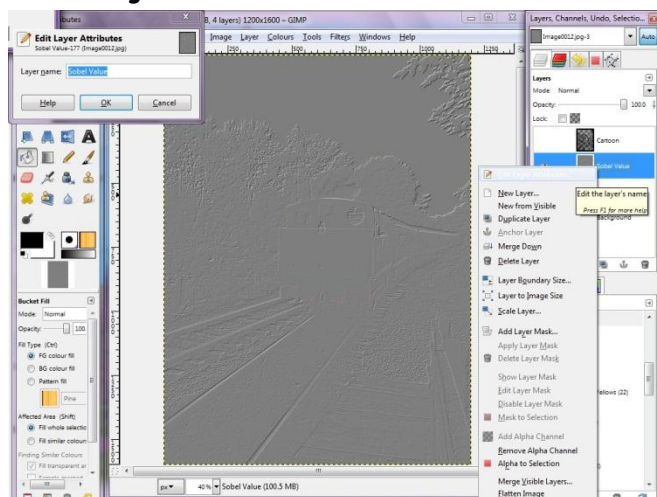
- XVII. Still with Sobel Vertical Layer Highlighted Change Layer Mode in Layers Window to Grain Merge.**



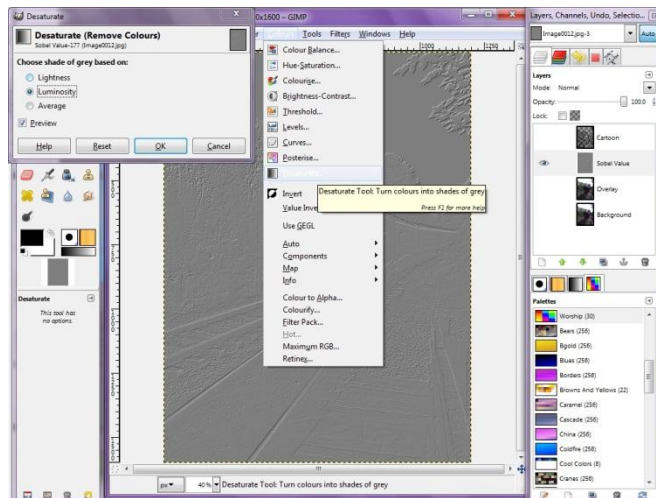
XVIII. Then Right Click on Sobel Vertical Layer and select Merge Visible Layers, A new window will open just click Merge.



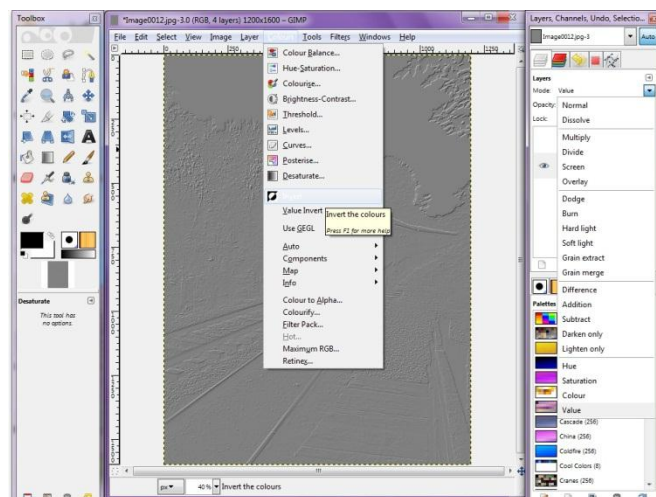
XIX. Both Sobel Layers have merged into one Layer so rename this Layer to Sobel Value.



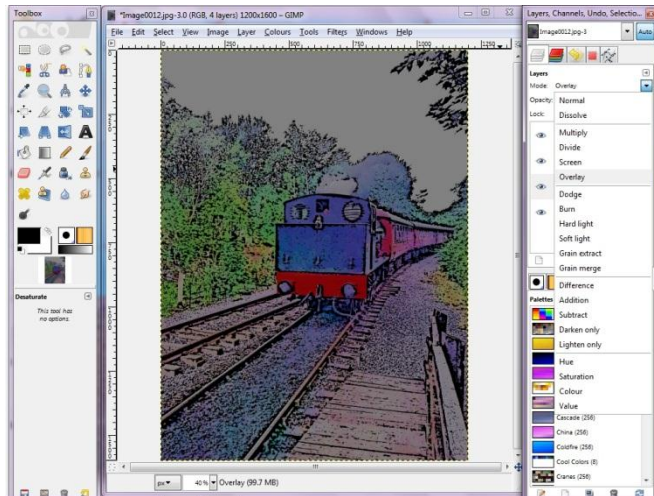
XX. With the Sobel Value Layer Highlighted go Colour>Desaturate, Check box Luminosity then click ok.



XXI. Then Go Colour>Invert and finally change Layer Mode to Value.



**XXII. Select all Layers and Highlight the Layer Named Overlay
Change Layer Mode to Overlay.**



XXIII. This should complete your Photograph to Indian Ink Style Painting.



Additional Note

- i. If you need less black in the Image then try reducing the Cartoon filter Values, A preview image is available to help assist in the settings.
- ii. If you need more black in the image then try increasing the Colour Selection Tool threshold to 25, Or increase the Cartoon filter Values.

