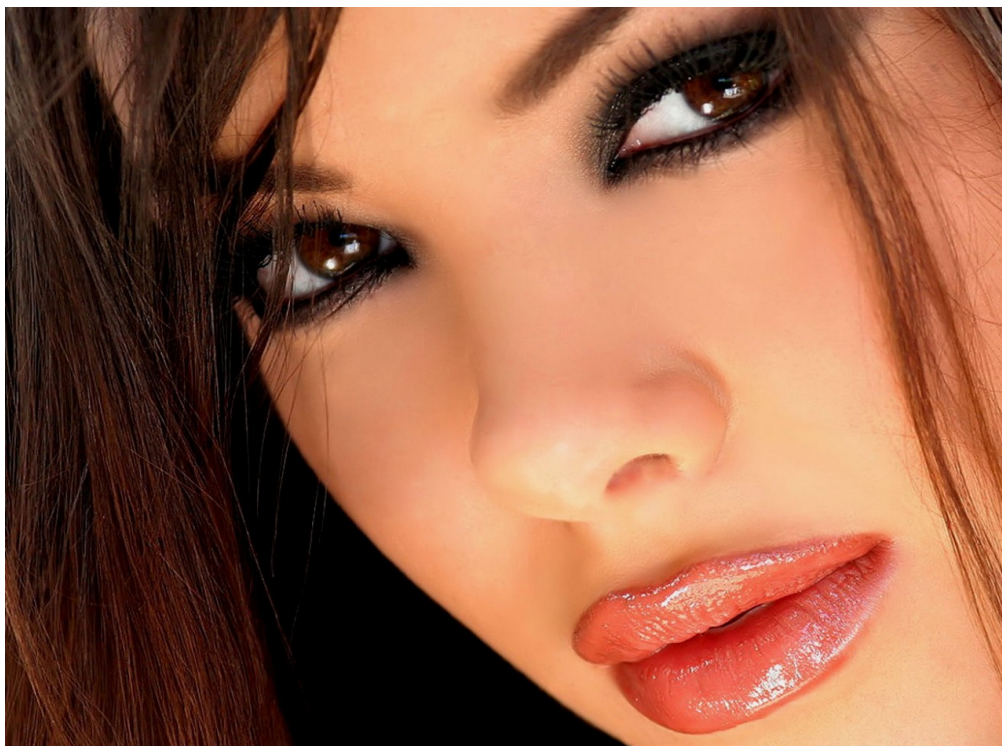


This is a tutorial adapted to use in GIMP. I found the original Photoshop tutorial here.  
<http://www.photoshopessentials.com/photo-effects/photo-strips/>



This is the image I'll give a weave effect.

For simplicity, I'm going to make the image square and in this case it ends up being 1000 x 1000 px.

This effect can be adapted for other sizes, but it seems to be easier in squares.

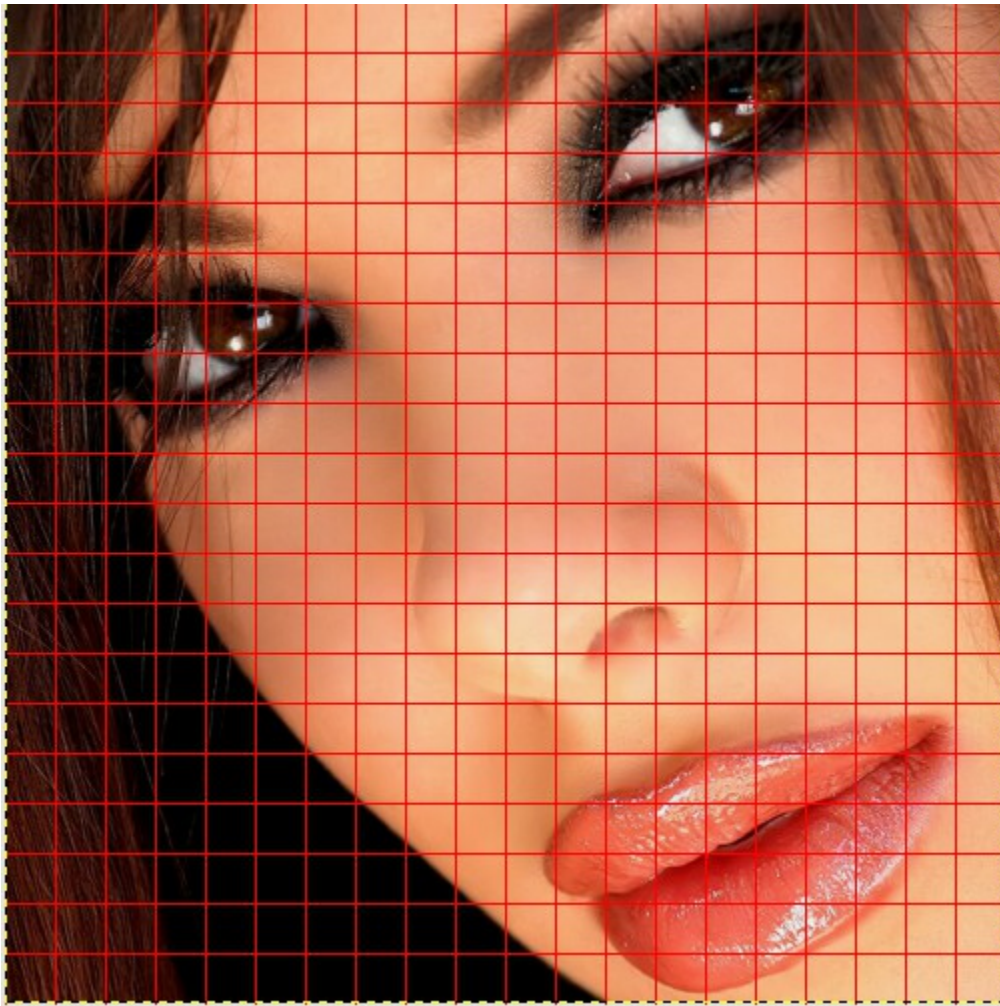
Now for the grid.

We're going to need a grid 20 x 20 squares. And as the tutorial progresses it becomes apparent why. For aesthetic reasons.

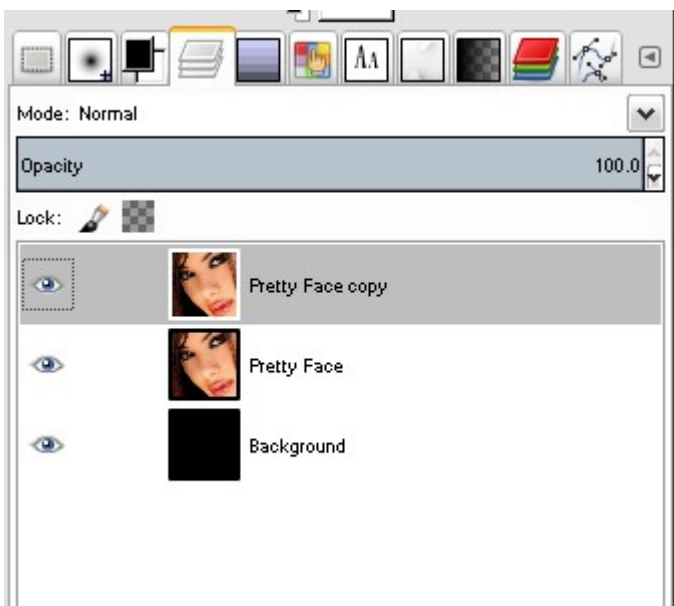
Go to Image > Configure Grid and in my case, I need the grid lines to be spaced 50 x 50 px. Line style and such don't really matter for our purposes. Though I did change the grid color to see it better.

Then go to View and make sure Snap to Grid and Snap to Canvas edge is checked. We're going to use this grid as a ruler for our cuts.

You're now looking at something like this.

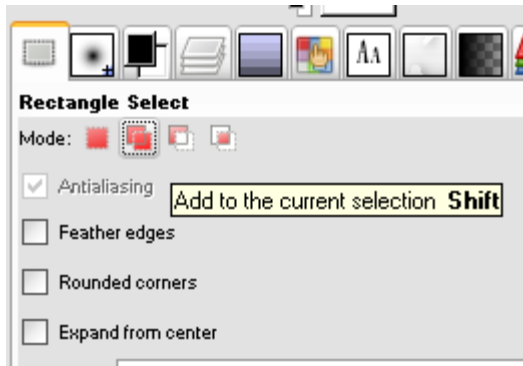


Now we duplicate the layer once and create a new black layer. (Or any color you find pleasing to the eye. This will be our background layer and goes to the very bottom of the stack.

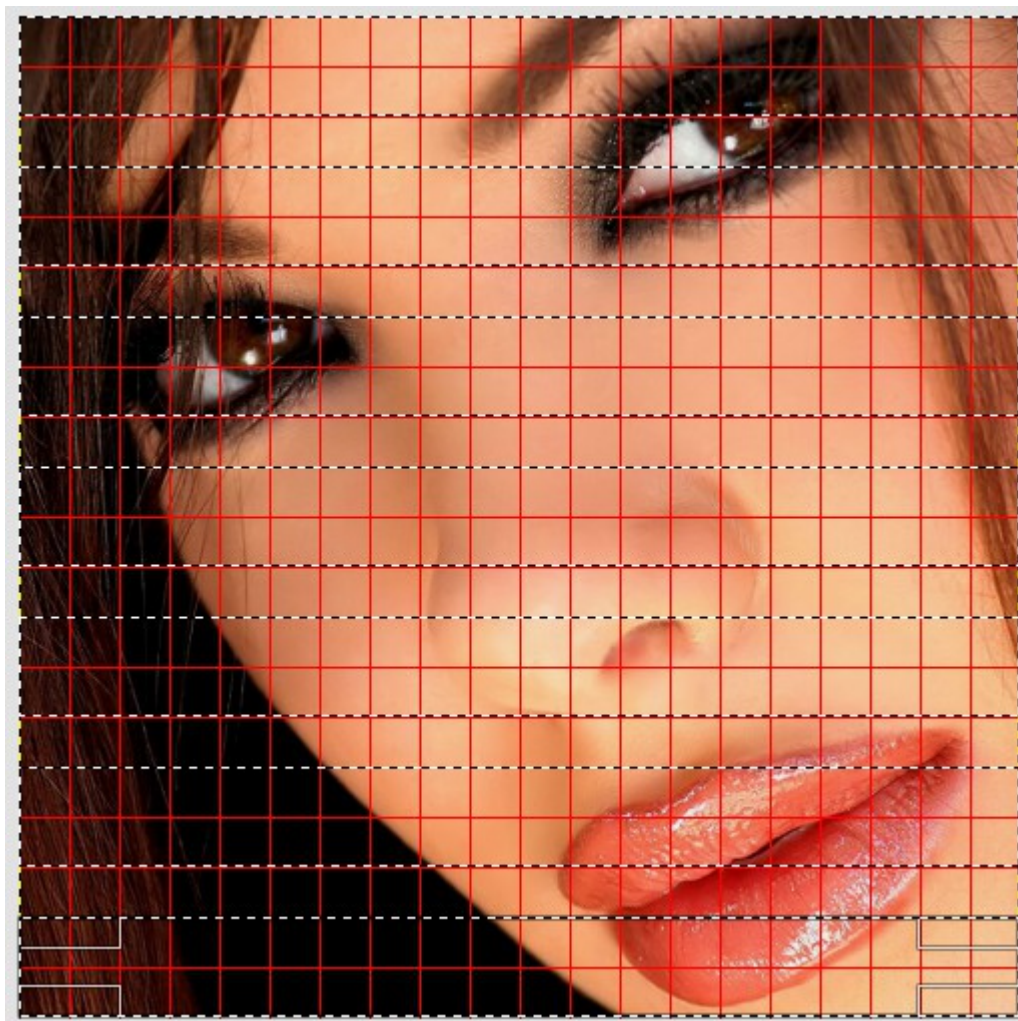


At this point we're turning the top layer off. (Click the eye.) And we want our grid to be visible. Use the bottom one of the two identical layers.

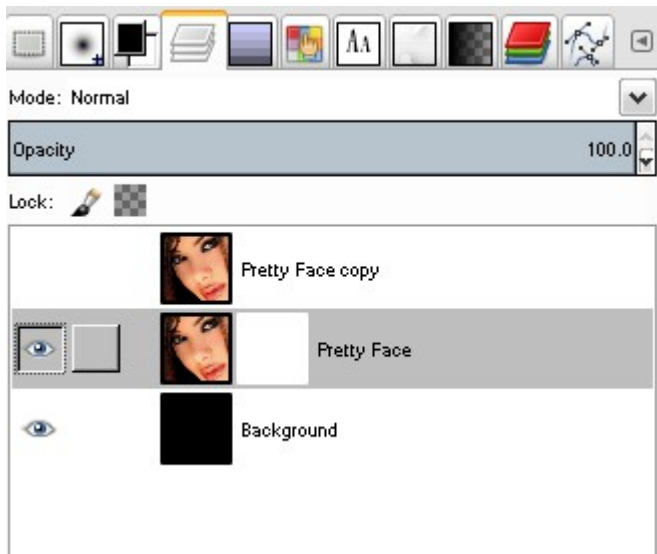
Go to the rectangle select tool and make sure it's set to add to the current selection.



Now starting at the top and working our way down, we select 2 rows of grid squares and we skip one row.

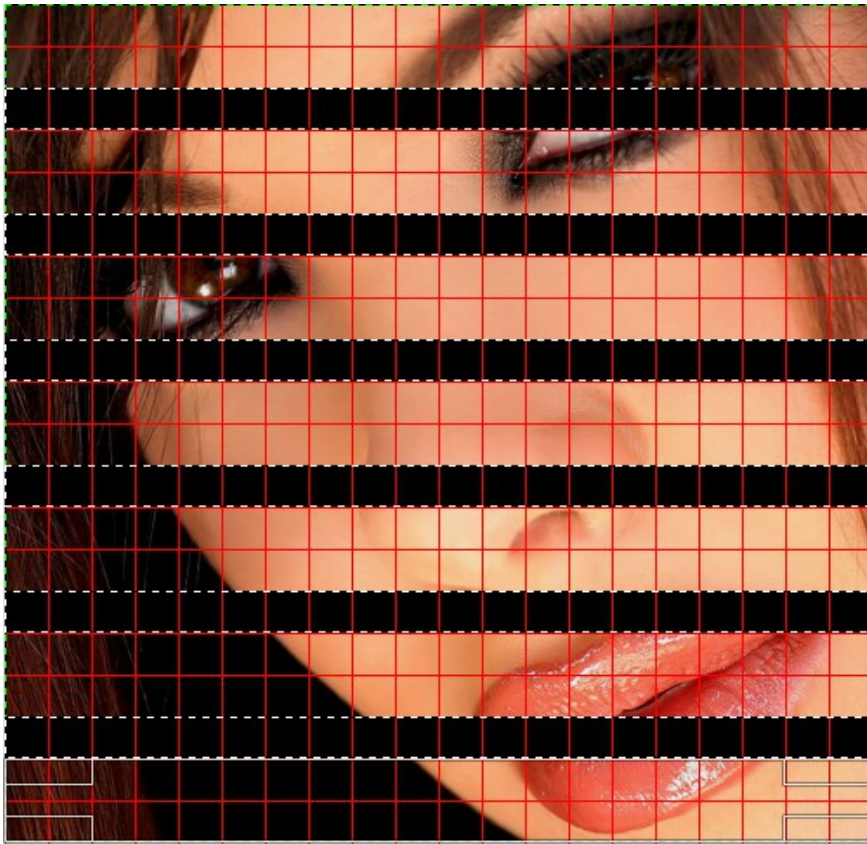


Now, the Photoshop tutorial uses fancy layer masks. So for the sake of argument, we're not just going to delete anything. Let's use layer masks too. Right click this layer, add a white mask full opacity.



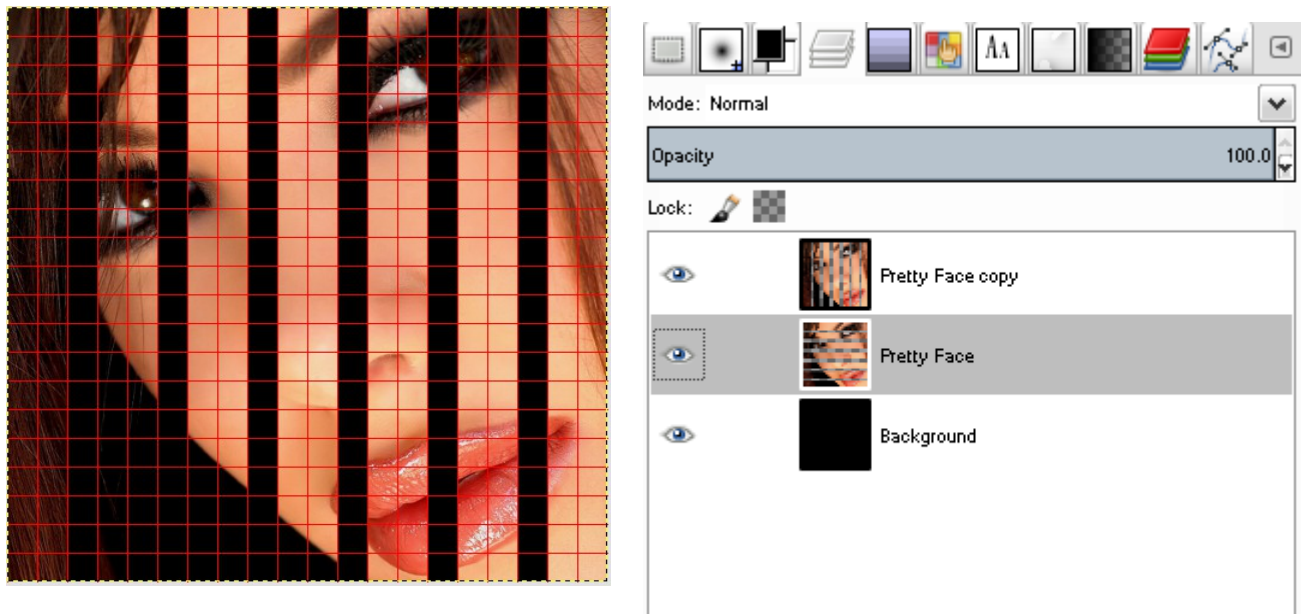
Invert selection, and paint black on the layer mask into the 1 square fields of the grid.

This is what this layer will look like, if we did it right. The black background will be peeking through.



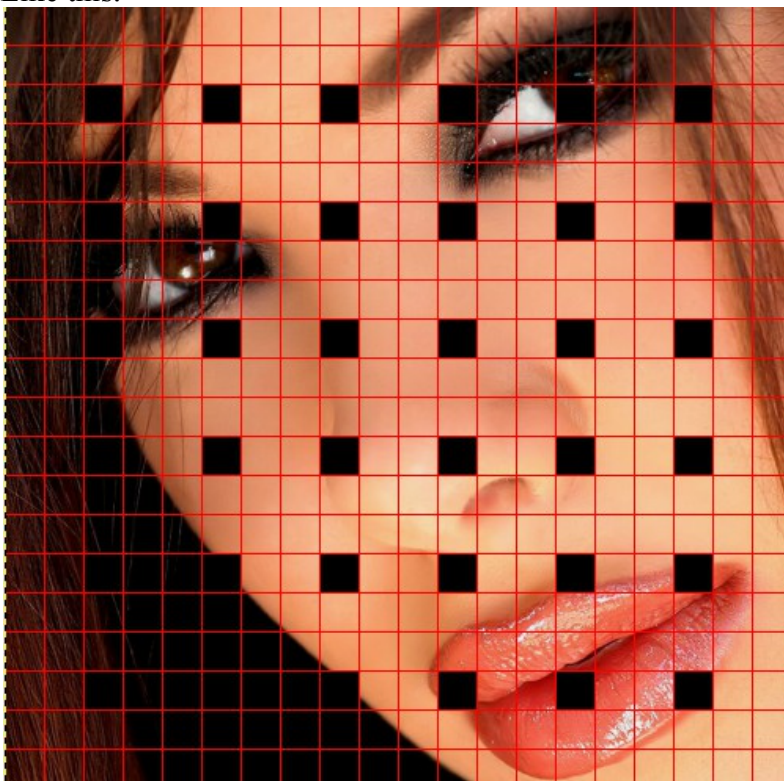
We can now right click this layer and apply the layer mask. (We really could have just deleted the strips but the tutorial for PS wanted to do it this way and who am I to argue.)

Now we're going to repeat the entire process again for the vertical stripes layer. We'll turn off horizontal for now so we can see better too. We'll see something like this. And once we're there, we can apply this layer mask too.

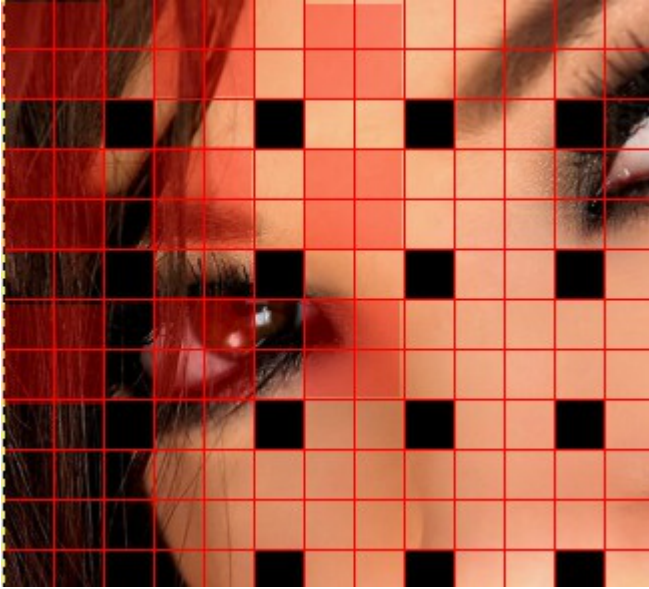


We'll turn all the layers back on and that should leave some rows of squares missing from the image.

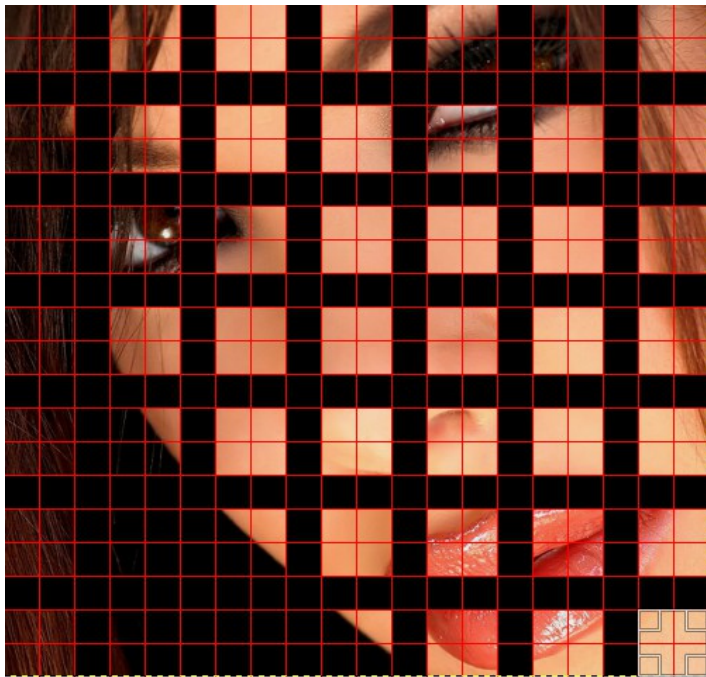
Like this.



Now we select all the intersections. These should be 2 x 2 squares in our grid.



Once they are all selected, copy and paste to a new layer. If you turn off both striped layers, the remaining new layer should look like this.



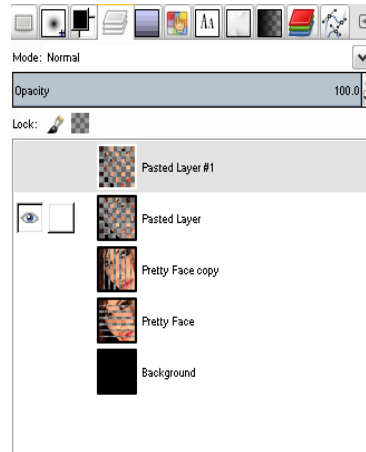
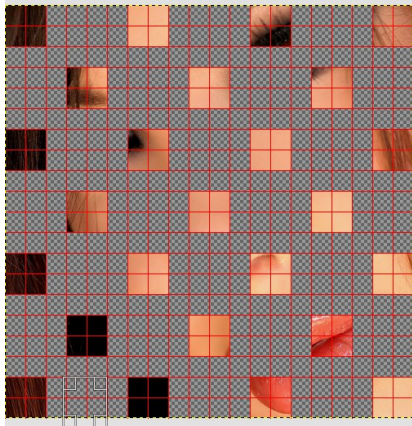
At this point the photoshop tut wants us to save our selection. But we're going to go a different route.

So we take the rectangle select tool. And this time we set it to subtract from current selection.



And we go around deselecting every other square., being sure to offset them in each row. Now we can simply cut the remaining squares, and paste them to a new layer.

This layer should look like this.



We should now have 2 layers with squares that are offset from one another, and our horizontal and vertical stripes layers, as well as a background.

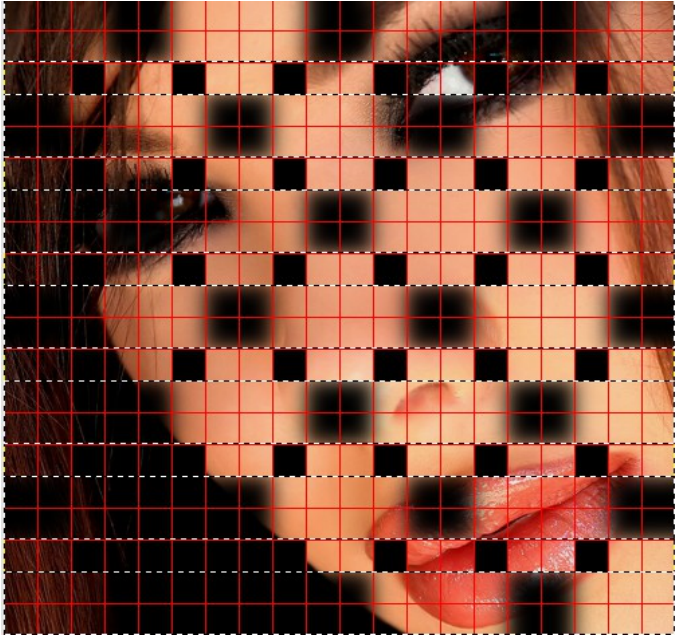
This next part might be a little tricky to explain.

First we turn off the top square layer. Alpha to selection on the second squares layer. Add a new transparent layer and fill selection with black.

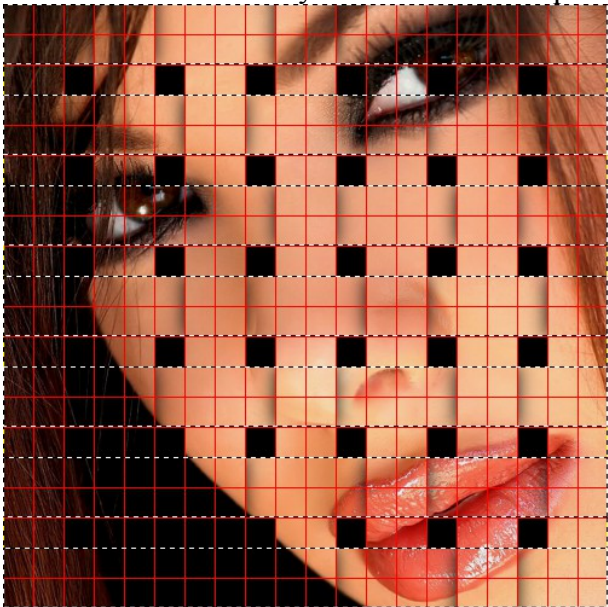
Now alpha to select the horizontal stripes layer and then go back to the new black squares layer we just made.

Now we gaussian blur by about 50.

Our result should look like this.

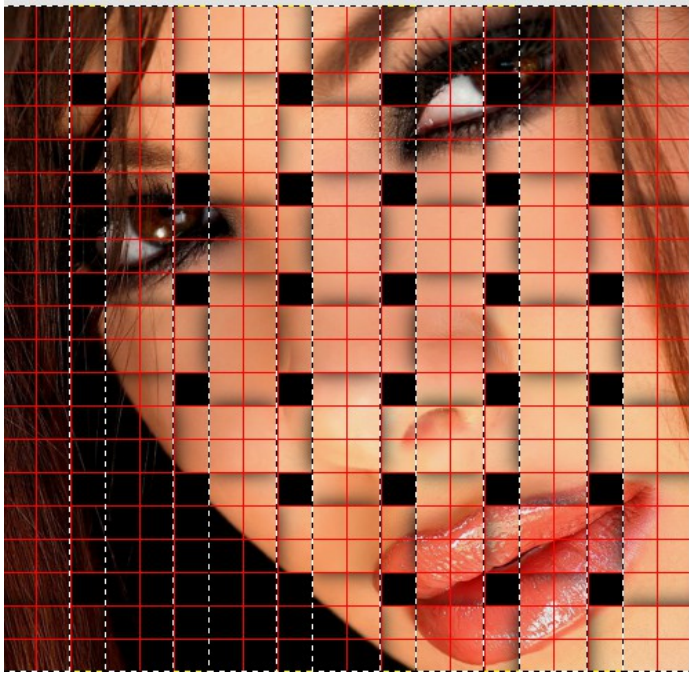


Now we can sort this layer under the corresponding picture squares and it will look like shadows.

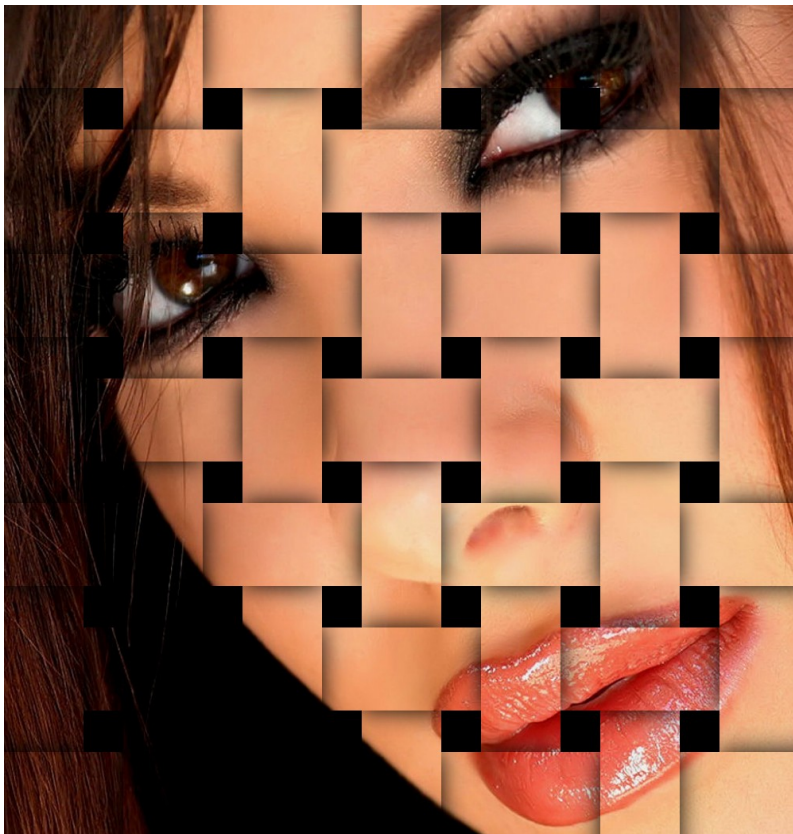


Now we can go and repeat the same process, only for the other set of squares. We'll use the vertical stripes for that layer.

With both shadow layers finished, it should look like this.



The finished image like this.



This is where the photoshop tutorial ends. There are more things we could do, like add highlights, or maybe a drop shadow on a lighter background or something. But in a nutshell. This is how we do it.