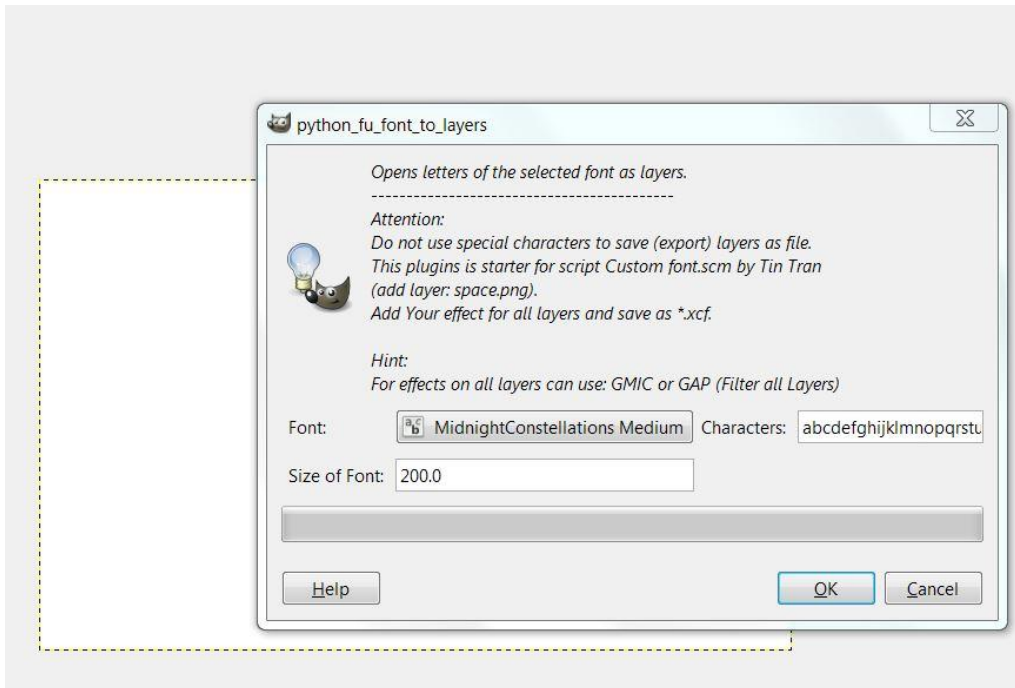


Guide to create a "Custom Font"

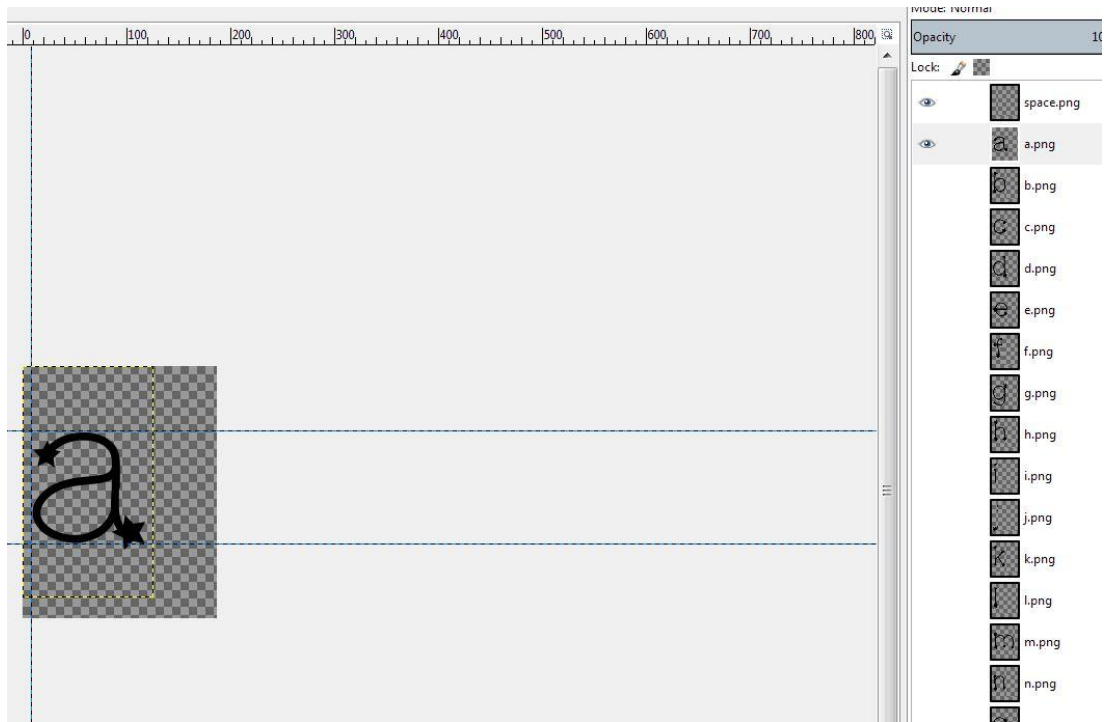
You need to have installed a script named **custom_font**, created by Tin. This script will do this process much easier and quicker.

The steps to follow:

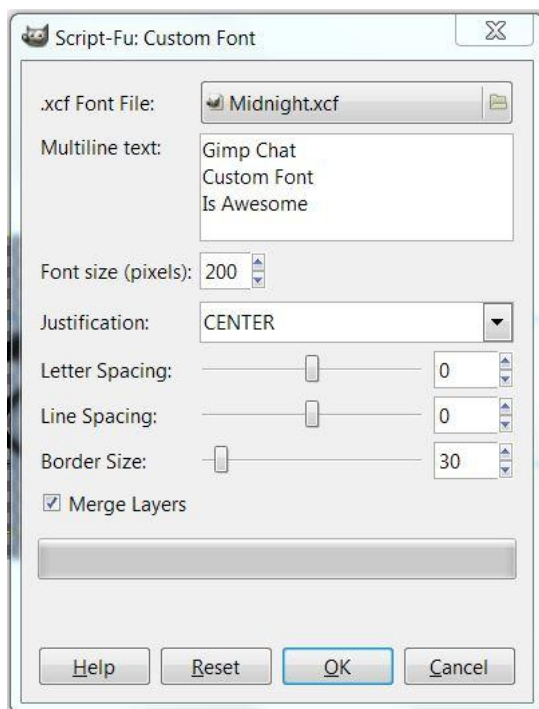
- 1- Open a canvas (any)
- 2- Filters – Text – Font to layers



- 3- Choose a nice font in the window; choose the size of the font. Also you can choose the whole letters, numbers and symbols you are going to need to create your custom font.
- 4- After that you have each letter in caps, numbers etc. in split layers.
- 5- The first layer is empty named (.space) but it's necessary to keep a little room/space between words.



- 6- Important. Set guides so that each letter or number keeps the same level and room.
- 7- You can start to decorate each letter, one after one. Save your work from time to time, until you complete the whole abecedary.
- 8- Normally each letter is well adjusted to the layer, but if not, you correct it by doing a correct selection so that the whole letter can be seen.
- 9- Check the font created: Filters – Script-Fu – Create new – Custom Font
- 10- Choose your new font created, and write what you want.



Accurate method by Rod

- 1) Create a new document
- 2) Using the text tool, create the entire alphabet caps only A-Z. Be sure to space the letters a bit.
- 3) Right click the text and create a path from the layer.
- 4) In the brush dialog select your favorite brush (can be animated). Size , color will be up to your liking.
- 4.5) Create a new layer (transparent) and select it.
- 5) Now select the path layer (right click stroke path) stroke the path with the brush (no dynamics)
- 6) Now you should have a whole alphabet with a brush outline on your new transparent layer.
- 7) Now right click the text layer and select alpha to selection. Shrink the selection by a few pixels.
- 8) Edit>stroke selection with the same brush again.
- 9) Repeat shrinking selection and stroking with brush until you get the results you desire.

The goal here is to fill your text with the brush object you select. So you can see how many different fonts you can create quickly this way. This is only one way to do it.

- 10) ONCE you have the font look you desire, use G'MIC Extract Objects to extract each letter to its own layer.
- 11) Now create a new layer at the bottom of the layer stack and name it "space.png" .
- 12) Now you need to select the move tool and from the top to the bottom select a layer and rename it (double click the layer) rename it to its corresponding character. For instance the period would be ".png" the question mark would be "?png" WITHOUT THE QUOTES A.png B.png C.png and so forth until all layers are named.
- 13) Next with the move tool still selected grab each character and move it to the far left of the canvas (make sure View>Snap to canvas edges) is selected. I normally start with the cap A and make sure its moved all the way to the left to snap against the canvas edge.
- 14) Once ALL the characters are snapped to the left of the canvas, CROP the entire IMAGE around the characters. This will greatly reduce your file size.
- 15) Go to Layer>Autocrop all layers (if you don't have that script use Layer>Autocrop Layer) however you will have to crop each one separately. Its easier to do them all at once with the script. Tran also wrote a script that auto crops all layers and fixes the layer border height all at the same time. This is what I use.
- 16) Time to test your XCF font file. Run the xcf with Trans Custom Font script and check alignment.
Most of the time you will only need to select the space.png layer and set the Layer>Layer Boundaries width smaller and to the left of the canvas. You can move the space.png layer by selecting the move tool and moving the empty layer way to the edge of the left side of the canvas.
- 17) Test the XCF font file again and check for faults. If none your ready to release it to the public.

That's it really. But remember its only ONE way to do this. There are many. This way is pretty quick and clean. Remember also that you can use any of your fonts for the outline so you have lots of capabilities there also.

MY ADVICE? Start with just caps and get good at those. Then move on to small characters, punctuation and so on.