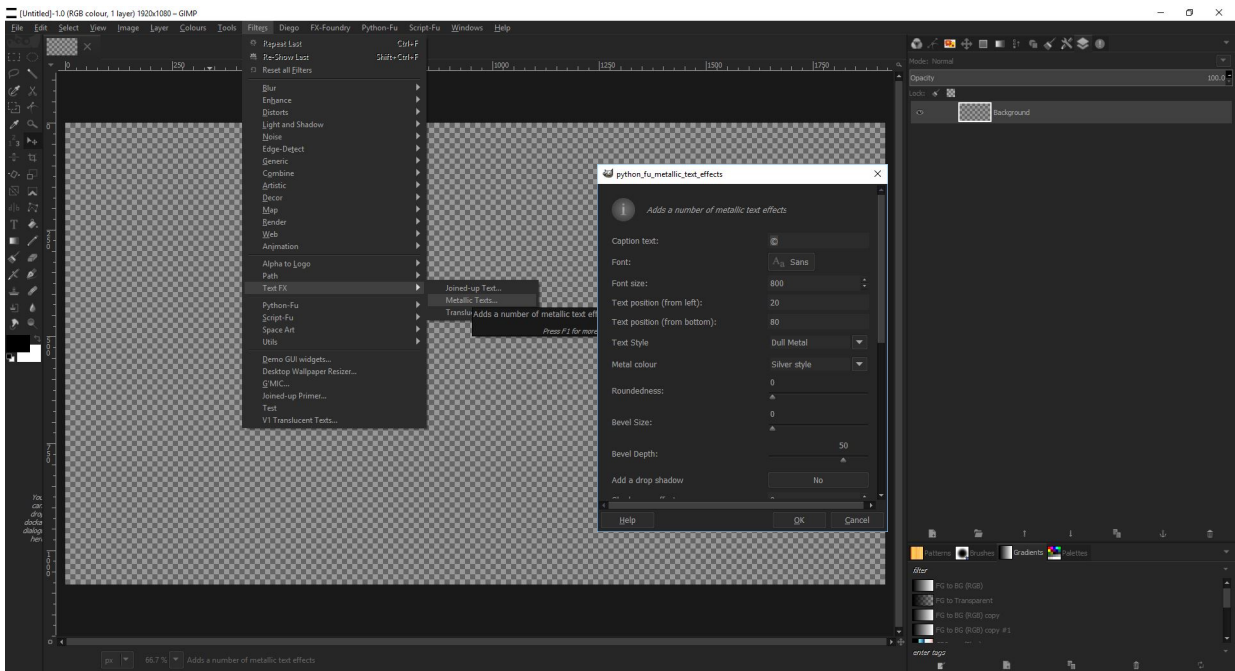


Step 5: Open the Metallic Texts filter

Open the Metallic Texts filter dialog from the Filters menu by following:

Filters > Text FX > Metallic Texts...

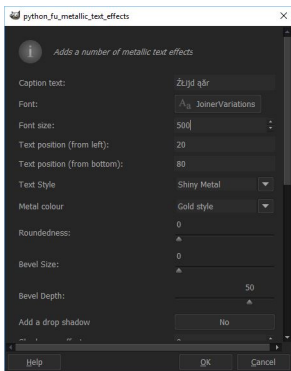
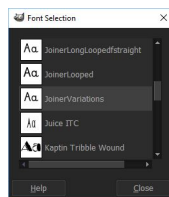


Step 6: Enter the Metallic Texts options

The most important option to set here is the Caption text. Delete any existing text and paste the text that you copied earlier into this box (right-click and select Paste or keyboard shortcut Ctrl + V).

Set these options as follows to copy my example:

Font:	JoinerVariations
Font size:	500
Text Style:	Shiny Metal
Metal colour:	Gold style



Note the gobble-de-gook in the Caption text box is how it should look. This is a result of the Gimp system font displaying its own unicode characters for the text. As long as you have set the Font to JoinerVariations it should work correctly.

Now hit OK on the Metallic Texts dialog.